

Boonville High School

*Career & Educational
Planning Guide*



Pirates



2020 - 2021

Boonville R-1 High School

Registration Handbook

The Boonville Board of Education has adopted graduation requirements established by the Missouri Department of Elementary and Secondary Education. **The courses you choose must meet the state requirements.**

REGULAR GRADUATION REQUIREMENTS

In order to receive a regular diploma from Boonville R-1 High School, a student must meet the following course requirements:

English Language Arts	4 units
Social Studies (Am. History, Government, elective)	3 units
Mathematics	3 units
Science	3 units
Fine Art	1 unit
Practical Art	½ unit
Physical Education	1 unit
Health	½ unit
Personal Finance	½ unit
Electives	7 units
Pass MO & US Constitution Tests, Civics Test & CPR	
Take EOC's required by the state	
Total Minimum Requirements	24 units

- Students must attend eight semesters in duration, grades 9 - 12
- Students must enroll in and pass at least (6) credits per year in order to graduate from Boonville HS in four years
- The majority of credits must be earned on campus at Boonville High School. However, it is possible for a student to earn up to three (3) units of credit through correspondence courses taken from an accredited institution.

GRADUATION HONORS

The cum laude system was adopted to encourage students to pursue a rigorous academic program. This program exceeds the minimum standards outlined for graduation. **Classes must be from the academic core. Embedded credit will not count toward graduation honors.** Students who complete this program of study, along with maintaining the specified grade point average, will receive a high school diploma awarded ***cum laude***, 3.5000-3.7499 GPA; ***magna cum laude***, 3.7500-3.8999 GPA; or ***summa cum laude***, 3.9000 GPA or above. GPA cannot be rounded up. Transfer students must maintain a minimum of a 3.0 GPA at BHS. Class rank is not used by Boonville High School. Class rank will not be given to students or included on high school transcript and will not be used to recognize students at graduation.

English Language Arts (ELA I and higher)	4 units
*Mathematics (Algebra I and higher)	3 units
Social Studies (Am. History, Government)	3 units
**Science (Physical Science and higher)	3 units
*** Core Electives	3 units
Fine Art	1 unit
Practical Art	½ unit
Physical Education	1 unit
Health	½ unit
Personal Finance	½ unit
Electives	4 units
Total requirements	24 units

- *Algebra IA will equal 1 unit of math credit toward graduation but will not fulfill honors requirement.
- **Elemental Physical Science and Elemental Biology equal one credit to fulfill honors requirement, but will count as 2 credits toward graduation.
- ***Core Electives can be earned from English language arts, math, science, social studies, and foreign language.

GUIDELINES FOR AWARDING CREDIT FOR PRIOR TO 9TH GRADE

The three units of required high school math can only be earned beginning the 9th grade year. Beginning 2013-2014 school year, all students who earned credit for Algebra I prior to 9th grade must continue to be enrolled in a math class through their junior year.

NCAA/NAIA ELIGIBILITY

Students who wish to participate in Division I or Division II sports in college must meet NCAA Clearinghouse eligibility requirements. Students wanting to participate in sports at a NAIA college must meet NAIA Eligibility. Students must register with the NCAA or NAIA online and submit their high school transcript. NCAA & NAIA will analyze a student's academic information and determine if a student meets initial eligibility requirements. Students who qualify are eligible to practice, compete, and receive athletic scholarships as college freshmen. Eligibility requirements and registration information can be found at www.ncaaclearinghouse.net and <http://naiaeligibility.com>. Interested athletes should refer to the NCAA core class requirements when planning coursework.

MISSOURI STATE HIGH SCHOOL ACTIVITIES ASSOCIATION

MSSHAA & BHS require that any student participating in sports, music, FFA, prom, dances etc., must be enrolled in a minimum of 3.0 credits (6 classes) during the semester of participation and must have earned 3.0 credits the previous semester. Because winter sports/activities take place during first and second semesters, students must earn 3.0 credits both semesters in addition to the previous semester. Any student not earning 3 credits will be ineligible for participation.

A+ PROGRAM

The A+ program currently provides tuition for students to attend Missouri Public community colleges & technical education programs. The current requirements are:

1. Attend an A+ high school for 3 consecutive years prior to graduation
2. Graduate with a 2.5 non-weighted cumulative GPA or higher; courses must be mainstream courses.
3. Graduate with 95% cumulative attendance
4. Perform 50 hours of unpaid tutoring in a school sponsored activity (12.5 hours can be job shadowing)
5. Maintain a record of good citizenship, and avoid the use of drugs and alcohol
6. Beginning with the Class of 2015, all students must score Proficient or Advanced on the Algebra I, Geometry or Algebra II EOC, or score the equivalent on designated assessment.

ADMISSION REQUIREMENTS FOR POST-HIGH SCHOOL EDUCATION

	University System & Truman State	MO 4 year Colleges**	2 Year Colleges & Technical Schools	Military
English Lang. Arts	4	4	4	4
Social Studies	3	3	3	3
Math	4 Algebra I & higher	3 - 4 Algebra I & higher	3	3 - 4
Science	3 Phys. Science & higher	3	3	3
Additional Requirements	2 Foreign Language ACT/SAT, GPA	Foreign Lang recommended ACT/SAT, GPA	Accuplacer Placement Test	ASVAB

**College Admission requirements vary, please check admissions requirements with college.

Notice of Nondiscrimination

The Boonville R-1 School District has adopted policies which affirm its compliance with applicable statutes regarding nondiscrimination on the basis of race, color, national origin, ancestry, religion, socioeconomic status, marital status, sex, age or handicapping condition. The institution is therefore in compliance with Title VI of the Civil Rights Act of 1964, Title IX of the Education Amendments of 1972 and Section 504 of the Vocational Rehabilitation Act of 1973.

Any person having inquiries concerning Boonville R-1 School District's compliance with regulations implementing the acts listed above are directed to contact the Superintendent of Schools, 736 Main Street, Boonville, MO 65233, who has been designated to coordinate the institution's efforts to comply with these regulations. Any person may also contact the Assistant Secretary for Civil Rights, U.S. Department of Education regarding compliance activities.

SFCC ONLINE & KEMPER CAMPUS DUAL CREDIT

State Fair Community College offers online dual credit courses in many academic subjects and traditional onsite classes at the Kemper Campus. Students must meet the eligibility requirements of 3.0 GPA, placement test scores, and pay tuition. A listing of all the online offerings can be found on the SFCC website: starssb.sfccmo.edu/PROD/tab_course_search.p Students taking online courses will be scheduled into a study period in the Media Center. Additional information on placement and scheduling can be found in the Guidance Office.

SFCC Online & Dual Credit		
Intro to Business (BADM 101) Personal Finance (BADM 107) Microcomputer Applications (CAPP 125) Intro to Biology with Lab (BIO 112) Biology I with Lab (BIO 125) Human Anatomy with Lab (BIO 207) General Chemistry I with Lab (CHEM 123) Environmental Science (EASC 116)	English Composition I (ENGL 101) Creative Writing (ENGL 106) Introduction to Literature (LIT 101) American Literature (LIT 107) Intermediate Algebra (MATH 112) College Algebra (MATH 114) American/Nat'l Government (POLS 101) US History Before 1877 (HI 101)	US History Since 1877 (HI 102) World Civilization Before 1500 (HI 108) General Psychology General Sociology Elementary Spanish I Elementary French Intermediate French Public Speaking

ON SITE DUAL CREDIT & ON-LINE COURSES

Dual-credit courses are offered through an agreement with Central Methodist University, State Fair Community College, and Missouri Valley College. **Students must be a junior or senior at Boonville High School with a minimum of a 3.0 grade point average and meet specified ACT or Accuplacer sub score requirements for the college level course. Students must pay tuition for dual credit and on-line classes.** The grades and credit earned will be transcribed on a college transcript and also on a BHS transcript (that will apply toward high school GPA). Students wishing to take dual credit should check with the college or university that the student plans to attend to see how dual credit will transfer. Colleges/universities will require a transcript to validate college credit. **Students must request a transcript DIRECTLY from the college.**

On Site Dual Credit Courses	College Title	College	Credit
Pre-calculus with Trigonometry	Analytic Trigonometry (MA 104)	CMU	½ unit, 3 credit hours, 2 nd sem
Pre-calculus with Algebra	College Algebra (MATH 103)	CMU	½ unit, 3 credit hours, 1 st sem
Quantitative Reasoning	Quantitative Reasoning (MA 109)	CMU	
Calculus	Calculus & Analytical Geometry (MATH 118)	CMU	1 unit, 5 credit hours, all year
Speech	Communication Skills (CT 101)	CMU	½ unit, 3 credit hours, 1 st or 2 nd semester
College Prep English	College Composition I (EN 101 & 102)	SFCC	½ unit, 3 credit hours, 1 st & 2 nd
Statistics	Statistics & Probability (MATH 106)	CMU	½ unit, 3 credit hours, 2 nd sem.
US History before 1877	History 101	SFCC	½ unit, 3 credit hours, 1 st sem.
US History after 1877	History 102	SFCC	½ unit, 3 credit hours, 2 nd sem.
App. Instrumental Tech & Theory I & II	Applied Instrumental Lessons I & II (MUS 136 & 137)	SFCC	½ unit, 1 credit hour, 1 st & 2 nd sem.
Medical Terminology I & II (on-line)	Intro. to Medical Terminology I & II (HEOC 120 & 122)	SFCC	½ unit, 3 credit hours, 1 st or 2 nd sem
Psychology	Intro to Psychology (PY 101)	CMU	½ unit, 3 credit hours, 1 st or 2 nd
Honors Government	American/National Government (POLS101)	SFCC	1 unit, 3 credit hours, 2 nd sem
Computer Applications	Microcomputer Applications (CAPP125)	SFCC	½ unit, 3 credit hours, 1 st or 2 nd
Personal Finance	Personal Finance (BADM107)	SFCC	½ unit, 3 credit hours, 1st or 2nd

FRESHMAN COURSE ELECTIVES

This chart has been developed to help you choose your electives for next year. **Placement in CORE classes is dependent on teacher recommendation.**

Practical Arts (1 unit required)	BTEC Practical Arts	Fine Arts (1 unit required)
Computer Applications – ½ unit Graphic Arts – 1 unit Intro. to Business – ½ unit Business Technology – ½ unit Family Relations – ½ unit Multimedia – 1 unit Foods I -- ½ unit Foods II – ½ unit Newspaper Publication – 1 unit Web Design – ½ unit Intro to Comp Prog – ½ unit Business Communications – ½ unit	Agriculture Science I – 1 unit Woodworking I - 1 unit JROTC (L.E.T.I) – 1 unit Marketing- 1 unit Computer Game Design – 1 unit PLTW Comp Science Principles—1 unit IT Fundamentals – 1 unit PLT Prin of Biomedical Science—1 unit PLTW Engineering Essentials – 1 unit	Art I – 1 unit Band – 1 unit Pirate Singers - 1 unit, audition Chamber Choir – 1 unit, audition Intro to Drama – ½ unit Drama I – ½ unit <div style="background-color: #d3d3d3; text-align: center; padding: 2px;">Electives</div> Spanish I – 1 unit Personal Health – ½ unit 9 th Boys or Girls PE – 1 unit Thematic Lit – ½ unit Yearbook- 1 unit Adv PE – 1 unit

SOPHOMORE COURSE ELECTIVES

This chart has been developed to help you choose electives for next year. **Placement in CORE classes is dependent on teacher recommendation.**

***To have sophomore status you must complete 5 credits by the start of the fall semester**

Practical Arts (1 unit required)	BTEC Practical Arts	Fine Arts (1 unit required)
Computer Applications – ½ unit Graphic Arts – 1 unit Adv. Graphic Arts – ½ unit or 1 unit Web Design – ½ unit Multimedia – 1 unit Personal Finance – ½ unit Accounting I & II- ½ unit each Introduction to Business – ½ unit Business Technology – ½ unit Business & Sports Management – ½ unit Business & Political Economics - ½ unit Child Development I – ½ unit Child Development II – ½ unit Pathways to Teaching Profession – 1 unit Pathways to Teach Prof Internship – 1 unit Intro to Computer Programming – ½ unit Business Communications – ½ unit	Foods I - ½ unit, 1 st sem. Foods II - ½ unit, 2 nd sem. Family Relations- ½ unit Housing & Interior Design – ½ unit <div style="background-color: #d3d3d3; text-align: center; padding: 2px;">BTEC Practical Arts</div> Agriculture Science I or II – 1 unit Woodworking I--1 unit Advanced Woodworking – 1 unit Intro to Health Science – ½ unit Consumer Car Care – ½ unit JROTC (L.E.T.I, II, or III) –1 unit Marketing –1 unit Advanced Marketing –1 unit Computer Game Design –1 unit PLTW Comp Science Principles –1 unit PLTW Cybersecurity –1 unit IT Fundamentals – 1 unit PLTW Prin of Biomedical Science – 1 unit PLTW Human Body Systems – 1 unit PLTW Engineering Essentials – 1 unit PLTW Digital Electronics –1 unit PLTW Robotics/CIM—1 unit	Art I or II– 1 unit Band – 1 unit Pirate Singers - ½ or 1 unit, audition Chamber Choir – 1 unit, audition Music of the 20 th Century – 1 unit Intro to Drama – ½ unit Drama I – ½ unit <div style="background-color: #d3d3d3; text-align: center; padding: 2px;">Electives</div> Health – ½ unit Adv. PE – ½ or 1 unit Lifetime Sports – ½ or 1 unit Walking for Fitness – ½ or 1 unit Newspaper Publication – 1 unit Yearbook – 1 unit Spanish I or II – 1 unit Library Aide – ½ or 1 unit Thematic Lit – ½ unit

JUNIOR/SENIOR COURSE ELECTIVES

This chart has been developed to help you choose electives for next year. **Placement in CORE classes is dependent on teacher recommendation.**

***To have junior status you must complete 12 credits by the start of the fall semester.**

***To have senior status you must complete 16 credits by the start of the fall semester.**

Practical Arts (1 unit required)	BTEC Practical Arts (cont.)	Electives
Computer Applications – ½ unit Graphic Arts – 1 unit Adv. Graphic Arts – ½ unit or 1 unit Web Design – ½ unit Multimedia – 1 unit Pers. Finance – ½ unit Accounting I or II – ½ unit each Introduction to Business – ½ unit Business Technology – ½ unit Business & Sports Management – ½ unit Business & Political Economics – ½ unit Intro to Computer Programming – ½ unit Business and Criminal Law – ½ unit Foods I - ½ unit Foods II - ½ unit Child Development I – ½ unit Child Development II – ½ unit Family Relations - ½ unit Housing & Int. Design – ½ unit Pathways to the Teaching Profession – 1 unit Pathways to Teaching Prof Internship – 1 unit Business Communications – ½ unit BTEC Practical Arts Agriculture Science I or II – 1 unit Agricultural Construction – 1 or 2 units Animal Science – 1 unit (even) Ag Leadership & Communications - 1 unit Conservation of Natural Resources – 1 unit (even) Greenhouse Operations I or II – 1 unit Landscaping & Turf Management- 1 unit (even) Ag Management & Econ – 1 unit (odd) Ag Power – ½ unit (odd) Ag Structures – ½ unit (odd) SAE Internship – senior only	Woodworking I – 1 unit Advanced Woodworking - 1 unit Intro to Health Science – ½ unit Health Science Lab I –2 units Medical Terminology I or II –1/2 unit Consumer Car Care – ½ unit Auto Tech Theory I or II—1 unit Auto Tech Lab I or II –2 units JROTC (L.E.T.I, II, III, IV) –1 unit Marketing – 1 unit Advanced Marketing – 1 unit Fashion Marketing – 1 unit Retail Marketing – ½ unit Entrepreneurship Hospitality, Travel & Tourism –1/2 unit Marketing Internship senior only – ½ -3 units Computer Game Design—1 unit PLTW Comp Science Principles—1 unit PLTW Cybersecurity—1 unit IT Fundamentals—1 unit PLTW Prin of Biomedical Science—1 unit PLTW Human Body Systems—1 unit PLTW Engineering Essentials—1 unit PLTW Digital Electronics—1 unit PLTW Robotics/CIM—1 unit Technical Math—Prac Art or Math—1 unit	Creative Writing – ½ or 1 unit Spanish I, II, III, or IV – 1 unit Mythology – ½ unit Sports Literature – ½ unit Psychology – ½ unit Sociology – ½ unit Criminal Justice – ½ unit Current Events – ½ or 1 unit Speech – ½ unit Personal Health – ½ unit Adv. PE - ½ or 1 unit Lifetime Sports – ½ or 1 unit Walking for Fitness – ½ or 1 unit Newspaper Publication – 1 unit Yearbook – 1 unit Teacher's Aide – ½ or 1 unit Library Aide - ½ or 1 unit Office Aide - ½ or 1 unit Hannah Cole Aide - ½ or 1 unit ACT Prep – ½ unit Thematic Lit – ½ unit STUCO Leadership – ½ unit Fine Arts (1 unit required) Art I, II, III – 1 unit Art Portfolio – 1 or 2 units Band – 1 unit Pirate Singers - 1 unit, audition Chamber Choir – 1 unit, audition Humanities – ½ or 1 unit Intro. to Film – ½ or 1 unit Intro to Drama – ½ unit Drama I – ½ unit App. Inst. Tech & Theory I or II– ½ unit Music of the 20 th Century – 1 unit

COURSE DESCRIPTIONS

ENGLISH LANGUAGE ARTS (4 units required)

English Language Arts Skills (ELA Skills)

ELA Skills is designed to be a one or two-year program. Students who demonstrate the necessary skills may be enrolled in ELA I after completing one year of ELA Skills. This course is designed to prepare students for entry into ELA I. ELA Skills concentrates on 3 major objectives: Improving reading comprehension skills through reading a variety of materials such as short stories, poems, and young adult novels; improving writing skills through essay, journal, technical, and creative writing activities; and improving speaking skills through oral presentations and class discussions. Students enter the class on a referral basis only.
1 unit

English Language Arts I (ELA I)

The basics of this required course advance the fundamentals of literature, written communication, and oral communication. The four literary genres (short story, drama, novel, and poetry) give the student a variety of reading experiences. Grammar, usage, and vocabulary will be studied, stressing application in the students' writing. Composing complete sentences and well-structured paragraphs, as well as experimenting with journal, report, business, and creative writing, serve as the essential parts of the composition program. Various individualized, dramatic, and oral presentations complete the outline of this course.

Required

1 unit

English Language Arts II (ELA II)

A major emphasis in this course is on written communication, including a review of Standard English writing conventions, usually on a weekly basis. The study of writing focuses on good sentence structure and effective expression of ideas. Also explored in this course are forms and ideas in literature. At least three novels are studied in class, and an outside reading program is required. Reading, grammar, mechanics, usage, and vocabulary skills are developed through the literature and composition units. At least one oral presentation is required during the course

Required

1 unit

English Language Arts III (ELA III)

ELA III will continue the study of literature as a reflection of the time, its people, and American culture from the earliest colonists to present day. Students will read, interpret, and discuss many types of American literature, including fiction, non-fiction, drama, speech, media, poetry, essays, and short stories. Students will write critical essays and creative papers that reflect the trends and philosophies of American literature and continue advancement toward more mature, refined writing skills. In addition, students will continue developing their research, oratory and rhetorical skills, vocabulary, and the rules of proper grammar usage. Students will participate in college preparatory, career studies and ACT skills.

Required

1 unit

English Language Arts IV (ELA IV)

ELA IV is an English course for twelfth grade students who have a variety of educational and career goals, including community college, four-year university, trade school, military service or workforce. The curriculum provides a study of literature, composition, presentation skills, and technical writing. Units of study focus on increasing reading, speaking, and researching skills and producing writings for different purposes and audiences.

Seniors

1 unit

College Composition/State Fair Community College (SFCC) Dual Credit

This college-level class develops the organizational and expository skills needed to provide a foundation for academic writing. Papers students will write include narration, exemplification, cause and effect, evaluation, problem and solution and augmentative. The focus is on research and using sources to support written arguments. The student will develop and hone critical thinking, reading, writing and rhetorical skills; explore complex issues from various perspectives, communicate ideas clearly and effectively in writing; understand rhetorical situations and tactics; effectively use sources to support a position and properly document the sources. In addition to high school credit, this course may be taken for 6 hours of college credit (ENGL 101 and 102) through SFCC.

Prerequisite: 3.0 GPA and one of the following: 18 **ACT** subtest score in Reading and English or 250 in **ACCUPLACER** Reading and Writing sections. Also, students must have completed ELA I, II, III with a 3.0 minimum or teacher recommendation.

Seniors

1 unit, 6 college credit hours

ENGLISH LANGUAGE ARTS ELECTIVES

Creative Writing

Creative Writing nurtures the talents of aspiring writers and encourages confidence in their expression of original ideas in the genres of nonfiction, fiction, and poetry. Creative Writing class provides a forum for upper-class students to continue to develop and improve their own creative abilities through extensive independent writing opportunities in a variety of genres. Since the writing process happens in a series of stages, writing and revision workshops allow writers to perfect their craft in a supportive and critical writing community.

Juniors or seniors

½ unit or 1 unit

Mythology

This semester course examines mythologies from all over the world through project-based studies. Students will develop a broad base of information about histories and belief systems of world cultures through the study of novels, poetry and drama. Students will increase their reading, writing and critical thinking skills during this course.

Juniors or seniors

½ unit, 1st semester

Sports Literature

This semester course examines the impact sports have on literature and the American culture. Students will develop reading, writing and critical thinking skills through the study of novels, non fiction, poetry and drama written by and about athletes and athletics.

Juniors or seniors

½ unit, 2nd semester

Speech (Communication Skills---CT 101) / Central Methodist University (CMU) Dual Credit

This course is the study of the theory of speech communication with emphasis on the development of specific skills in the one-on-one and public speaking situations. The class will teach research and outline techniques and organizational skills necessary for informative and persuasive speeches. Students will learn and demonstrate verbal and visual delivery techniques. The class will keep a current events folder to prepare for extemporaneous speeches and debates. All students will learn oral interpretation technique. This course does not count as a required ELA credit. **This course may be taken for 3 hours of credit through Central Methodist University with the requirement that a student has a 3.0 G.P.A. by time of enrollment.**

Juniors or seniors

½ unit, 1st or 2nd semester, 3 college hours

Thematic Literature

Over the course of one semester, Thematic Literature exposes students to universal themes through the study of literature and various forms of personal and analytical writing. Students will study the theme(s) through all genres of literature and from classic to contemporary literature and will be able to make connections between the theme in multiple texts, the theme in their own lives, and the theme in the world.

Open to all grade levels

½ unit

ACT Prep

This class is designed to help prepare junior or senior students in preparation for the ACT college entrance examination. This class will specifically cover curricular areas in mathematics, communication arts reading and science reasoning that are assessed on the ACT. In addition, test taking strategies will be taught and practice ACT exams will be administered and scored. The goal of this class is to improve performance on the ACT. Grades will be assigned according to student improvement. Students will be strongly encouraged to sign up for and take one ACT test during the semester.

Prerequisite: Recommend completion of Algebra I

Juniors or seniors

½ unit

JOURNALISM

Newspaper Publication

This class is responsible for the production of the *Pirate Press* and the *Potty Press*. Students will learn all aspects of newspaper production, including story selection, interviewing, writing and editing. Students will also learn about the technical aspects of producing a newspaper, including photography, graphic and layout design. Some after-school work is required.

Prerequisites: ELA grade of B- or better or instructor's permission. Desktop publishing skills are helpful but not necessary.

Open to all grade levels

1 unit

Yearbook

Do you want to be a part of history? This year-long course produces the high school yearbook, the *Buccaneer*. If you are interested in a career in Marketing, Communications, Graphic Design, Writing, Journalism, and Commercial Art, this class will give you the basic skills. Students will be trained in writing, photography, design, marketing, and financial management. Students will work with Adobe Photoshop and InDesign daily. Participating on the yearbook staff is a huge opportunity and privilege. After-school work will be required for taking photos and completing yearbook pages. Yearbook staff will compete at J-Day contest and will be eligible to compete in FBLA related contests. Other skills learned are problem-solving, teamwork, technology integration, and meeting deadlines. Students are eligible for FBLA membership.

Prerequisites: Recommend 2.5+ cumulative GPA, recommend ELA “B-” or better or instructor’s permission, recommend Graphic Arts, submit Yearbook Staff Application to instructor by due date, and optional interview with the instructor. Selection will be based on GPA, ELA grade, attendance, enrollment in Graphic Arts class, and submission of Yearbook Staff Application by deadline. Staff members will be approved by the instructor on an individual basis.

Sophomores, Juniors, Seniors; Freshmen by middle school yearbook adviser and/or business teacher and/or by high school yearbook adviser

1 unit, repeatable

FOREIGN LANGUAGE

Foreign language is not required for high school graduation. However, many four year colleges/universities recommend 2 units of a foreign language for college entrance.

Spanish I

This course introduces the student to the language vocabulary of 1500 to 2000 words, present-tense verbs, and Hispanic cultures. The aim of this course is the acquisition of basic language skills that will establish a beginning proficiency in speaking, listening, reading and writing in Spanish. In addition, students will achieve an awareness of key cultural traits of the major Spanish-speaking countries and make connections between foreign language and other disciplines.

Prerequisite: Recommended English Language Arts with a “B” average

1 unit

Spanish II

This course continues to develop the student’s acquisition of vocabulary in a practical context. Verb tenses used include present, preterit, and some imperfect. The course will further the student’s proficiency in speaking, listening, reading, and writing in the Spanish language. Students will continue to make connections between Spanish and other disciplines, and make comparisons between the Hispanic culture and the culture of the United States of America.

Prerequisite: Recommended complete Spanish I with a “B” average

1 unit

Spanish III

This course reviews grammar and vocabulary previously covered and continues development of skill in speaking, reading, writing, and understanding oral Spanish. Verb tenses include the present, preterit, and imperfect.

Prerequisite: Complete Spanish II with a “B” average

1 unit

Spanish IV

This course continues to develop the student’s acquisition of vocabulary in a practical context while making advanced connections between Spanish and other disciplines. Verb tenses include present, preterit, imperfect, subjunctive, future, and conditional. More emphasis is put on producing the language. This course will further the student’s proficiency in speaking, listening, reading and writing in the Spanish language and finish the transition to an intermediate Spanish speaker. This course continues to make comparisons between the Hispanic cultures and the culture of the United States and, more specifically, the culture of mid-Missouri.

Prerequisite: Complete Spanish III with a “B” average.

1 unit

SOCIAL STUDIES

(3 units required)

American History

American History is a required **one-year** course. Upon completion, students will be able to interpret significant political, social, economic, and cultural developments from Civil War America to Present. Using simulation, discussion, and current events, students learn to deal critically with different concepts, issues, and patterns in American History. Topics to be covered in this course over the full year will include: Reconstruction, Western Expansion, Industrialization, Urbanization, Immigration, The Progressive Era, Imperialism, World War One, The Roaring Twenties, The Great Depression, The Rise of Dictators, World War Two, The Civil Rights Era, The Cold War Era, and 21st Century America. The course focuses not on a student’s ability to recall facts, but on whether students can find relevance, think critically, and support an argument with evidence. A student’s grade is largely based on classroom performance, project completion, and testing.

Freshmen (Required)

1 unit

World History

World History is a required one-year course for sophomores. The course spans a vast amount of time from early civilizations to modern times, and it is designed to give students an overview of world history and a solid understanding of events, movements, and individuals that have impacted world history and that have shaped the world we live in today. The course discusses and studies various cultures, religions, politics, economics, geography, wars, individuals, and events that have impacted particular civilizations or time periods. Students will uncover patterns of behavior, identify historical trends and themes, explore historical movements and concepts, and test theories.

Sophomores

1 unit

Government

Government is a required one-year course for juniors, and the class is designed to acquaint students with the origins, concepts, organizations, and policies of state and national government. The course studies what government is, the types of government throughout history and throughout the world, and the role that government plays in people's lives. The course focuses on the development of American government, including our political origins, the adoption of the U.S. Constitution, the branches of government, and key principles and concepts in American government. In addition to the U.S. government, studies will also study Missouri government and the Missouri Constitution. Throughout the year, students will take and must pass the U.S. Constitution test, the Missouri Constitution test, and a citizenship test, all of which are requirements for graduation from Boonville High School. In addition, students will also be required to take the Missouri End-of-Course ("EOC") exam on government.

Juniors (required)

1 unit

Honors Government / POLS 101 – American/National Government/State Fair Community College (SFCC) Dual Credit

Survey course of the American government and political systems. Particular attention is given to the government's origins, politics, the branches of government, and policy making. During this course students take the US Constitution Test, The Missouri Constitution Test and the Missouri Civics Initiative Test. All three of these tests are required by the Missouri Department of Elementary and Secondary Education to pass to graduate high school. These tests also meet the requirements of Senate Bill No. 4. Students may enroll for this class for High School Credit. Those who meet the college entrance requirements may also enroll in this class and earn 3 college credit hours from State Fair Community College.

Juniors

½ unit, 3 college hours

Current Events

Upon completion of this course the student will: 1) understand the who, what, when, where, why, and how of news events, 2) distinguish between local, state, national, and international news events, 3) analyze how issues may affect students' lives, 4) read and analyze a news article for discussion, 5) identify the role of geography in news events, 6) determine the political motives of a news story, 7) describe the progression of a news event, 8) make decisions as an informed citizen.

Juniors or seniors

½ unit

Criminal Justice

This course is an introduction of the basic concepts and approaches in the study of criminal justice. The major components of the criminal justice system are examined including violent, property, public order, and organizational offenses. Emphasis will be placed on theories of and responses to these crimes.

Seniors

½ unit

Psychology—An Introduction (CMU) Dual Credit

This course is designed for students who would like to learn more about human behavior. Among the topics that students will explore are how people perceive, thinking and memory, learning personality, psychological development, consciousness, attitudes, intelligence and mental health. Psychology is a good course for those preparing for college. This is a reading intensive course that is taught on the college level.

Prerequisite: 3.0 GPA and English teacher approval; recommended Accuplacer Reading 230 or ACT Reading 18

Juniors or seniors

½ unit, 3 college hours

Sociology

This course is a survey of the current issues facing society today. Using sociological concepts and ideas, the student will examine these issues. Special attention is paid to the major theories of sociology: conflict theory, structural-functional theory, and symbolic-interaction theory. This is a writing intensive course.

Juniors or seniors

½ unit, 2nd semester

US History Before 1877 HIST: 101/State Fair Community College (SFCC) Dual Credit

Survey of the political, economic and social development of the United States from its European origins through the Reconstruction Process. This course will focus on Colonial America, The American Revolution, Antebellum America and the Civil War. A study of the Missouri Constitution is included to meet the state's requirements in Senate Bill No. 4. Students may enroll for this class for ½ unit of High School Credit. Those who meet the college entrance requirements may also enroll in this class and earn 3 college credit hours from State Fair Community College.

Seniors

½ unit, 3 college hours

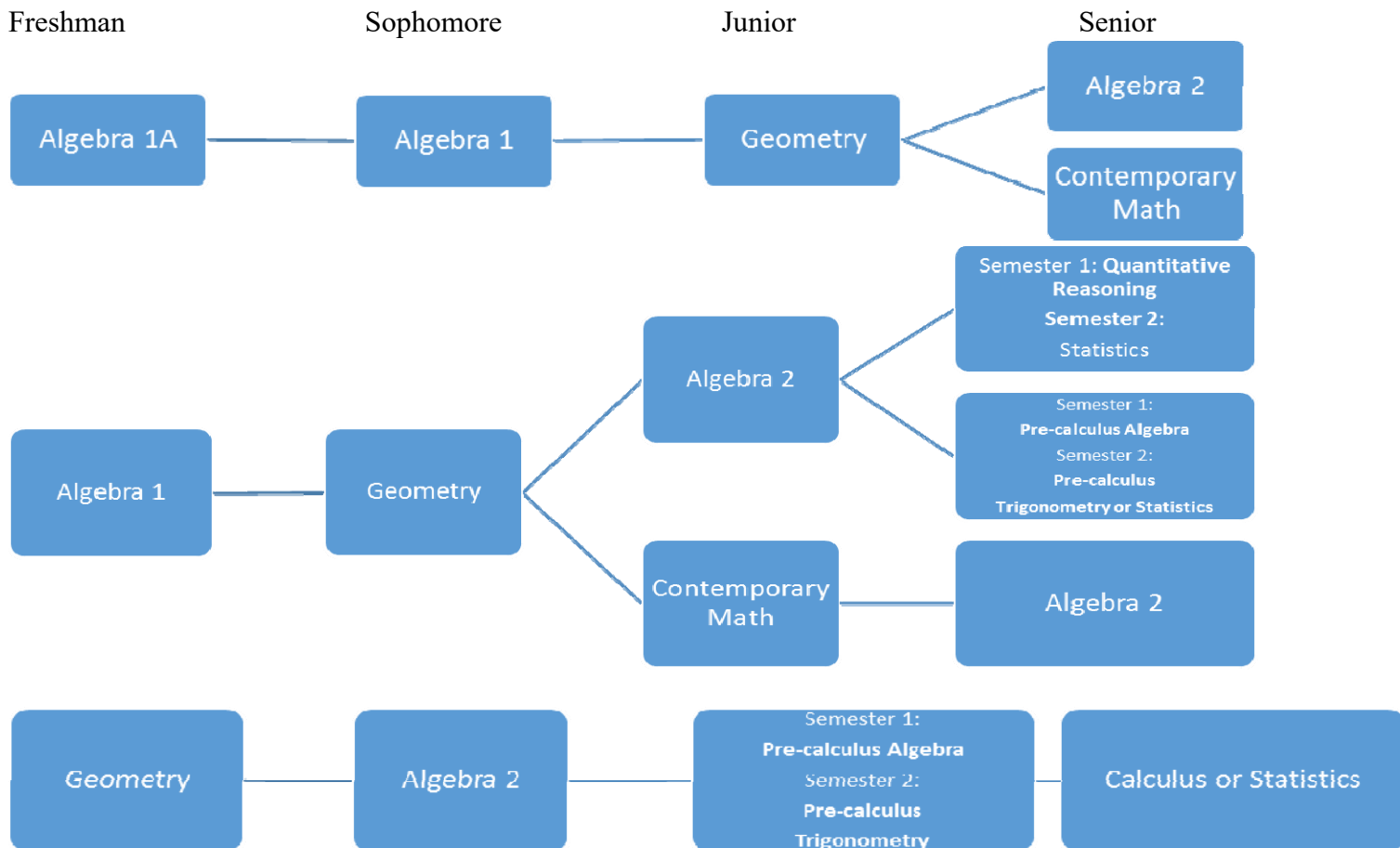
US History Since 1877 HIST: 102/State Fair Community College (SFCC) Dual Credit

Survey of the political, economic, social, and military development of the United States from 1877 to the present. Issues covered in this course include Western Expansion, The Gilded Age, The World Wars, The Cold War, and The Vietnam Conflict. A study of the Missouri Constitution is included to meet the state's requirements in Senate Bill No. 4. Students may enroll for this class for ½ unit of High School Credit. Those who meet the college entrance requirements may also enroll in this class and earn 3 college credit hours from State Fair Community College.

Seniors

½ unit, 3 college hours

MATHEMATICS
(3 units required)



Most classes will make extensive use of the TI-83+ or TI-84+ graphing calculator

Algebra IA

Algebra 1A is a two-semester course offered to students in grades 9-12. This course is designed to give students a solid foundation in basic algebraic concepts and to provide additional reinforcement in general mathematical skills. Students will participate in work developing an enriched background in Algebra which should lead to better success in Geometry and Algebra II. It will cover the first half of Algebra I topics. The focus is on linear functions: solving linear equations/inequalities, writing linear equations/inequalities, graphing linear equations/inequalities.

1 unit

Algebra I

Algebra I is a two-semester course offered to students in grades 9-12. This course is designed to give students a solid foundation in basic algebraic concepts and skills. Algebra I involves the study of equations, functions, linear equations and inequalities, multiplying and factoring polynomials, exponential functions and solving rational, radical and quadratic equations. Topics from all branches of mathematics including Geometry, Probability and Statistics are integrated throughout the course. At the completion of Algebra I, students are required to take the Algebra I End of Course test, which is 10% of their semester grade.

1 unit

Math Lab

Math Lab is designed to be taken in conjunction with Algebra I or Algebra IA classes to provide additional learning experiences which promote greater success in mathematics. These experiences will include, but are not limited to developing a richer knowledge of vocabulary, basic skills, and other strategies designed to enhance student learning. Successful completion of this course provides ½ or 1 elective credit. This class earns pass/fail credit. Teacher recommendation required.

Geometry

Geometry is a two-semester course designed to develop spatial concepts and relationships. Development of a precise mathematical language is stressed and reading and problem solving are emphasized throughout. Algebraic principles are applied throughout the course. Technology is used as an instructional tool. Topics covered in the course are points, lines, planes, angles, polygons, triangles, circles, area, and volume. Proofs are integrated throughout the course.

Prerequisite: Algebra I or teacher approval

1 unit

Contemporary Math

Contemporary Mathematics, a two semester course, is designed to survey some of the important ideas and practical applications in Mathematics that are useful in our world today. Topics of study will include problem solving, critical thinking, logic, sets, number theory, algebra, financial management, measurement units and conversions, geometry, statistics and mathematical modeling. Students will acquire knowledge and understanding across a wide range of mathematical disciplines and how they apply to modern social situations, while integrating various technologies such as calculators and computers.

Prerequisite: Algebra I and teacher recommendation

Juniors or seniors

1 unit

Algebra II

Algebra II is a two-semester course offered to students in grades 10 – 12. This course is designed to use basic algebraic and geometric concepts within the complex number system. Students will develop the skills to use and apply exponentials and logarithms, solve higher degree polynomial equations, investigate sequences and series, and explore trigonometric functions, discrete mathematics and probability. Graphing calculators are used daily in Algebra II.

Prerequisite: Algebra I and Geometry and teacher recommendation

Sophomores, juniors or seniors, 1 unit

Precalculus Algebra / Central Methodist University (CMU) Dual Credit

Precalculus Algebra is a semester course offered to students in grades 11 and 12 with a prerequisite of C- or higher I Algebra II. This course is intended to prepare students for fields of study that require a high level of algebraic reasoning or Calculus. Topics include the foundation of functions, analysis of functions and algebraic reasoning. This class is offered for 3 hours of dual credit and follows the guidelines for Precalculus Algebra provided by the Missouri Department of Higher Education. This course replaces College Algebra at the college level, ACT score needed

½ unit, 3 college hours

Precalculus Trigonometry / Central Methodist University (CMU) Dual Credit

Precalculus Trigonometry is a semester course offered to students in grades 11 and 12 with a prerequisite of C- or higher in Precalculus Algebra. The course includes the application of trigonometric functions including both a unit circle and right triangle approach, solving and graphing trigonometric equations and functions, proving trigonometric identities, introduction and use of radian measure, polar forms of equations and complex numbers and vectors in two and three dimensions. This course is primarily to prepare students for Calculus and Physics at the college level. This class is offered for 3 hours of dual credit and follows the guidelines for Precalculus B provided by the Missouri Department of Higher Education.

½ unit, 3 college hours

Elementary Statistics / Central Methodist University (CMU) Dual Credit

Statistics is a semester course offered to seniors with a prerequisite of C- or higher in PreCalculus Algebra or Quantitative Reasoning. Topics covered include methods for visual presentation of data, measures of central tendency, measures of variation, introduction to probability, counting methods and advanced probability, normal distribution, binomial distribution, F-distribution, inferential statistics and hypothesis testing of means, variances and correlations, linear regressions, chi-square distributions, rank sum and Spearman's rank testing. . This class is offered for 3 hours of dual credit and follows the guidelines for Statistical Reasoning provided by the Missouri Department of Higher Education.

½ unit, 3 college hours

Quantitative Reasoning / Central Methodist University (CMU) Dual Credit

QR is a semester course offered to seniors with a prerequisite of C- or higher in Algebra II or teacher recommendation. This course is designed for students who do not need College/Precalculus Algebra for their degree plan. This is mainly for students who intend to major in a variety of career paths falling within the humanities or liberal arts. Topics covered include proportional reasoning, mathematical modeling, probability, counting techniques, and financial mathematics. This class is offered for 3 hours of dual credit and follows the guidelines for Mathematical Reasoning and Modeling provided by the Missouri Department of Higher Education.

½ unit, 3 college hours

Calculus / Central Methodist University (CMU) Dual Credit

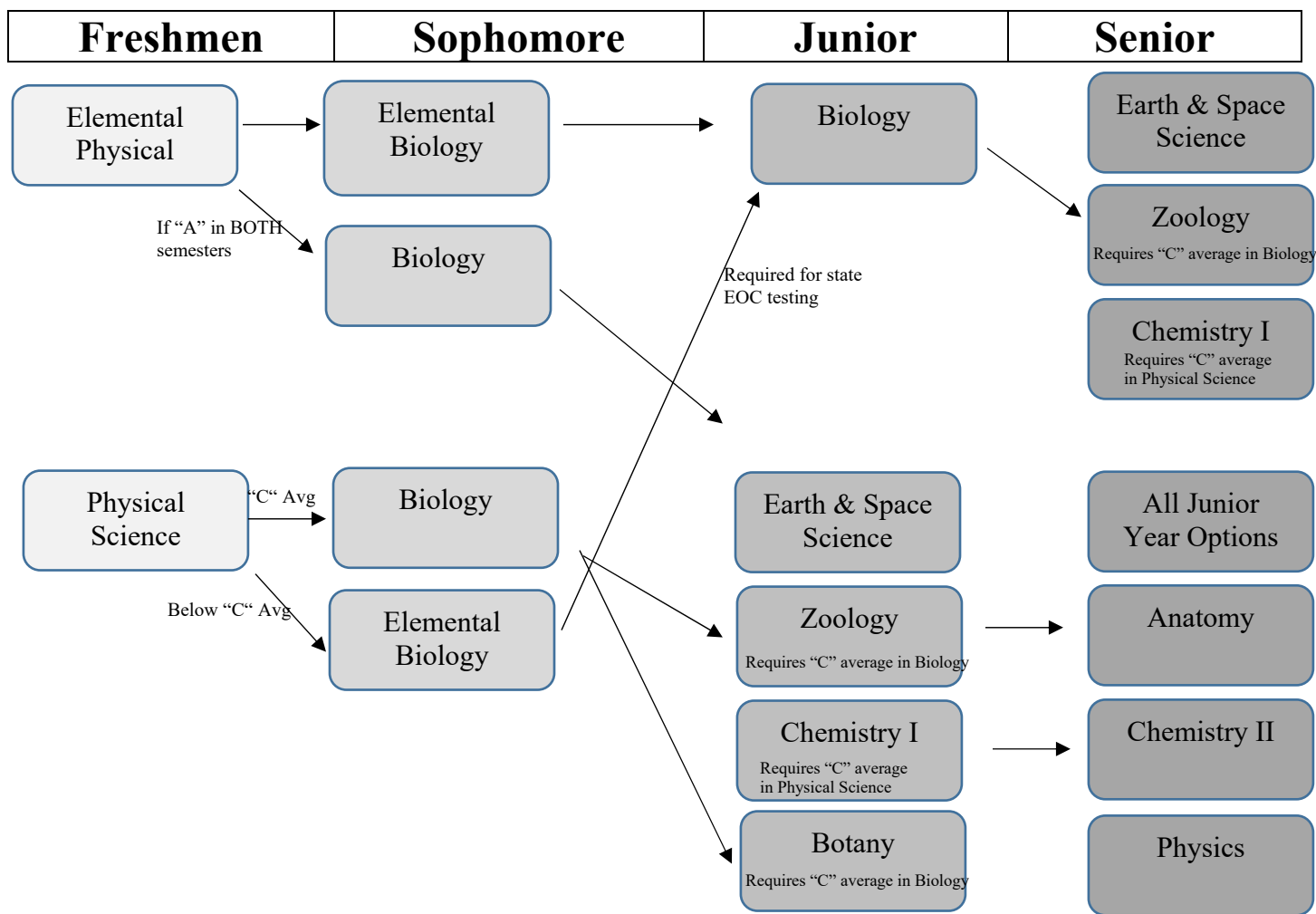
Calculus is a two-semester course emphasizing elementary analytic geometry, functions, limits, continuity, derivatives, anti-derivatives and definite integrals. All topics are covered from a theoretical and application perspective. **This course may be taken for college credit with the requirements that a student has a 3.0 GPA and at least a STEM ACT score of 26.**

Prerequisite: Pre-calculus/Trigonometry with a grade of "B" or higher or teacher approval.

Seniors

1 unit, 5 college hours

SCIENCE
(3 units required)



Elemental Physical Science

Elemental Physical Science is designed to enlighten students about the physical world. Class topics will include Newton's Laws, Force (including learning about work), Machines and Gravity. Motion, which includes the study of speed, velocity, and acceleration will be explored; along with the types, conservation and conversion of energy. Basic Chemistry is explored, including the Periodic Chart and its contents, mixtures, compounds and chemical reactions. Labs will be used periodically to emphasize topics and scientific inquiry.

Freshmen
1 unit

Physical Science

This course is designed as an introduction to Physics and Chemistry for 9th grade students through lecture, inquiry and collaborative techniques. The following topics will be introduced: Measurement, motion, forces, energy, waves, matter, periodic table, chemical reactions and solutions. An understanding of basic algebra is strongly suggested. This course is a prerequisite for Biology and Chemistry.

Freshmen
1 unit

Elemental Biology

Elemental Biology is designed to encourage students to explore and learn about our living world. We will investigate ecology and how it affects us and our Earth. Cell biology will be covered so that we know where we came from and how we got here and the components of the cell. Genetics study will include what makes each of us unique and why and how traits are passed on to each generation. Labs will emphasize each topic and reinforce scientific inquiry.

Prerequisite: Elemental Physical Science
1 unit

Biology

Biology is a course designed to introduce students to the nature of scientific inquiry, ecology, cells, genetics, DNA, and evolution. Labs are done with an emphasis placed on the development of scientific thinking, problem solving, analysis, written communication, and presenting results.

Prerequisite: Physical Science with “C” or above or Elemental Physical Science with “A”
1 unit

Earth and Space Science

Students will study the universality of change, from the rock cycle through the plate tectonics. Topics include physical properties of matter, rocks and minerals, weathering and erosion, historical geology, plate tectonics, volcanism and earthquakes. This course will also include a focus on weather and the Earth’s position in space. Topics will include weather (seasons, cloud formations, precipitation), natural disasters, and space studies. Students will learn through lecture, lab simulations, specimen collection, analysis and fieldwork.

Prerequisite: Biology

Juniors or seniors

1 unit

Botany

In this class you will have the opportunity to learn the role of plants in our world today, including food, clothing, and medicine. Other topics to be covered are plant structure, propagation, genetics and classification of native and exotic plants. You will be allowed to design, implement and present a plant research project with the help of fellow students, teachers and possibly University of Missouri scientists. This course is designed to include educational trips.

Prerequisite: Biology with a “C” average

Juniors or seniors

1 unit

Zoology

This course is a study of the diversity of animal life and the adaptations that enable animals to inhabit so many ecological niches. Students will learn the classification of the Animal Kingdom, the animals form and structure (morphology), and how those structures work (physiology). The units of study will include: Taxonomy, Porifera, Cnidaria, Ctenophora, Platyhelminthes, Nematoda, Mollusca, Annelida, Arthropoda, Echinodermata, Fish, Amphibia, Reptilia, Birds, and Mammalia. Labs, projects, and dissections will be done throughout the year. Comprehensive semester finals and comprehensive lab practicals will be given.

Prerequisite: Biology with a “C” average

Juniors or seniors

1 unit

Human Anatomy and Physiology

This course is designed as a college preparatory Anatomy course. Students will learn the parts of each human body system and how the body system works. The units of study will include: Diseases, Tissues, Integumentary system, Skeletal system, Muscular system, Nervous system, Endocrine system, Cardiovascular system, Respiratory system, Digestive system, Urinary system, Reproductive system, and a Cadaver demonstration. Labs, projects, and dissections will be done throughout the year. Comprehensive semester finals and comprehensive lab practical will be given.

Prerequisite: Zoology

Seniors

1 unit

Chemistry I

This course is designed to introduce students to the nature of chemistry and chemical compounds. Topics studied include scientific techniques of measurement, properties of elements, compounds and mixtures, properties of the periodic table, chemical bonding and chemical reactions. The course will include lecture and laboratory experiments as well as cooperative learning. Comprehensive semester finals will be given. The course is necessary for college bound students majoring in the science field.

Prerequisite: Algebra I and Physical Science with a “C” average

Juniors or seniors

1 unit

Chemistry II

This course is designed to prepare students to major in science post-high school. Topics studied include chemical reactions, thermodynamics, acids and bases, solubility and organic chemistry. The course will include lecture and laboratory experiments as well as cooperative learning. Comprehensive semester finals will be given.

Prerequisite: Chemistry I

Juniors or seniors

1 unit

Physics

This course is designed as an introduction to the fundamental laws of the universe. The following topics will be introduced: Measurement, motion, matter, forces, energy, waves and sound. Students will be active in hands-on engineering and inquiry activities. A calculator and a strong mathematics background are necessary.

Prerequisite: Algebra II

Seniors

1 unit

FINE ARTS **(1 unit required)**

Art I

Art I is the basic studio orientation course focusing on the elements and principles of art. The class content includes drawing, color study, art history, design, weaving, and 3-dimensional art.

Supplies needed: wood or mechanical pencils and a \$20.00 art fee.

Open to all grade levels

1 unit

Art II

This course will begin in advanced drawing experiences with an emphasis on the human figure. As the student progresses, emphasis will transfer to watercolor techniques. A pottery unit will include the basic techniques and understanding clay as an art medium. Experiences will include: Coil, slab, sculpture, and other hand building techniques. Students will become knowledgeable in glazing their art pieces. **Supplies needed: wood or mechanical pencils and a \$30.00 art fee.**

Prerequisite: Art I with a "B+" and teacher approval

Sophomores, juniors, and seniors

1 unit

Art III

This course will begin with intensive study in different painting media, such as oil, acrylic, watercolor and Batik. Students will also have the opportunity to explore other media such as clay, weaving, 3-d design, etc. Students will further their clay working skills by learning how to create functional pieces on a pottery wheel.

Supplies needed: wood or mechanical pencils and a \$30 art fee

Prerequisite: Art I & Art II with a "B+" and teacher approval

Juniors or seniors

1 unit

Art Portfolio

This course is a pre-approved class for seniors. This course is for students who plan to major in Art or have a serious interest in it. Students will further develop their style and creativity by creating a portfolio. The focus of their portfolio will center on a cohesive series of several pieces all based on the same theme, a necessary skill for artists today.

Supplies needed: wood or mechanical pencils and \$30 art fee; for a 2-hour block, \$50.

Prerequisite: Art I, II, and III with an "A" or teacher approval.

Seniors

1 or 2 units

Humanities

Humanities is an advanced course that takes students on a literary journey to explore other countries and cultures such as Spain, France, Africa, Ireland, Asia, Italy, and the Middle East. The students are exposed to different cultures through a sampling of literature (novels, short stories, folklore, plays, poetry), art, music, food, religion, architecture and traditions.

Juniors or seniors

½ or 1 unit

Introduction to Film

This is a survey course which presents a representative sample of films selected from the genres action/adventure, comedy, drama, historical, horror, musical, science fiction, war, documentary, western, and foreign films. This enrichment class will introduce the students to basic film concepts and terminology giving them an occasion to learn and practice a more analytical language for talking and writing about film. Also, the course will allow students an opportunity to experience a broader range of movies than they are used to seeing. Students will keep response journals on each movie to keep them critically engaged throughout the movie. Movie reviews and short essays are required.

Juniors or seniors

½ or 1 unit, 1st semester or all year

Intro to Drama

Intro to Drama will allow any student that has not taken Intro to Drama or Drama 1 to participate in the study of theatre. This class will explore the craft of acting, directing, and performing in front of the class. Students will approach acting through theatre exercises, games, and energy work designed to develop performance skills, acting techniques, creativity and self-expression. Students will also be introduced to basic principles and structures of dramatic writing through discussion, exercises and applied process. The class will demonstrate their understanding of theatre production and performance during performances in class.

Open to all grade levels (cannot have taken Drama or Intro to Drama before)

½ unit, 1st semester

Drama 1

Drama 1 will allow any student that has taken Intro to Drama to participate in the production of the annual spring play. This class will explore set design, costume, and stage make-up. Students who take this class will be required to participate in the spring play and be required to attend rehearsals after school and evenings. Try-outs for the play will be held prior to Christmas break. Students will also learn characterization throughout the process of learning their role in the play. This class will demonstrate their understanding of theatre production and performance during the production of the annual spring play.

Open to all grade levels (Must be in the annual spring play to be in this class)

½ unit, 2nd semester

Band

The focus of high school band is to develop intermediate and advanced individual and ensemble musical skills. These skills are refined through various ensembles throughout the year beginning with marching band in the fall. Home football games, two marching band festivals and local parades provide students the opportunity to prepare for many performances in a short time frame. Concert band, All-District and All-State Band auditions in the fall develop individual and ensemble musical skills that continue into second semester with performances at basketball pep band, solo and small ensemble festivals and increased focus on advanced concert band skill application.

Open to all grade levels

1 unit

Pirate Singers

Pirate Singers is a select performing ensemble open to students in grades 9-12 with teacher approval. Emphasis is placed on the improvement of vocal production, music reading skills, and general musicianship through the study of choral literature and techniques. Choir members perform in concerts and contests and have opportunities to sing in large and small ensembles.

Attendance is required for all performances and special rehearsals.

Prerequisite: Audition with director

Open to all grade levels

½ unit (must be 1st semester) or 1 unit

Chamber Choir

Chamber Choir is an auditioned group of 30 students in grades 9-12 who travel to various civic functions, extracurricular school activities, concerts and contests during the school year. Chamber Choir is an advanced course and singers will sing challenging literature selected from a wide variety of musical styles and historical time periods. Students will have many opportunities for singing in both large and small ensembles in addition to solo opportunities. Attendance is required for all performances and special rehearsals.

Particular emphasis is placed on improving sight-reading skills due to the amount of material covered in a short time. **Students will be responsible for purchasing concert attire: approximately \$125.**

Prerequisite: Audition with director

Open to all grade levels

1 unit

Music of the Twentieth Century

This course will offer instruction of music fundamentals, theory, songs, performing, listening, composing, improvising, and learning how to read standard music notation. A portion of the class will be spent focusing on music through the USA, using the guitar, and learning playing techniques. No prior musical knowledge is required. There will be an approximate \$15 fee during the spring semester to tour the Kansas City Jazz Museum in Kansas City to support a portion of the curriculum. This class has limited enrollment.

Sophomores, juniors, or seniors

½ unit (must be 1st semester) or 1 unit

Applied Instrumental Technique and Theory I (MUS 136)

The students enrolled for the fall semester will be required to meet weekly with one of the two instructors for at least 30 minutes for private instruction. Materials studied for the course will be taken from the Missouri All-State Band Audition Music and will include scales up to 4 sharps and 4 flats for the full range of the instrument. The student will be required to audition for the West Central All-District Band on the second Saturday of November and if eligible will be required to audition for the Missouri All-State Band on the first Saturday in December. In addition there will be opportunities to perform individually with solos and ensembles for events in the community. **This class may be taken for 1 hour of dual credit (MUS 136) through State Fair Community College.**

Juniors or seniors with teacher's permission

½ unit

Applied Instrumental Technique and Theory II (MUS 137) / State Fair Community College (SFCC) Dual Credit

The students enrolled for the spring semester will be required to meet weekly with one of the two instructors for at least 30 minutes for private instruction. The students will be required to participate in District Music Solo and Ensemble as well as State Music Festival if eligible. Materials for the solo and ensemble work must be taken from the A or B difficulty from the Missouri State High School Activities Graded Music List. In addition there will be opportunities to perform individually with solos and ensembles for events in the community. **This class may be taken for 1 hour of dual credit (MUS 137) through State Fair Community College.**

Prerequisite: Applied Inst. Technique and Theory II and teacher approval

Juniors or seniors with teacher's permission

½ unit, 1 college hour

PRACTICAL ARTS (1 unit required)

Computer Applications State Fair Community College (SFCC) Dual credit

Want to be an expert at Microsoft Office? This semester course is for college and work bound students in any field. All careers will require you to use a type of computer to process data. Students will learn to use Word, Excel, Access, and PowerPoint through step-by-step instruction and projects. Other skills learned are problem-solving, critical thinking, technology integration, and meeting deadlines. Students will learn advanced features beyond middle school computer classes. Students are eligible for FBLA membership.

State Fair Community College Credits: CAPP 125 - Microcomputer Applications 3 (3 credit hours)

Prerequisite: Equivalent reading placement score into ENGL 070. Keyboarding proficiency is recommended. ACT test requirement with a Reading score of AT LEAST 14 or ACCUPLACER Next-Gen test requirement of a Reading score of AT LEAST 237.

Prerequisite: none.

Open to all grade levels.

½ unit, 3 college hours

Graphic Arts/Desktop Publishing (Graphic Design)

Interested in print media or do you like art? Graphic Arts is a year-long course. If you are looking at a career in Marketing, Communications, Graphic Design, Writing, Commercial Art, Web Design and Programming, this class will give you the basic skills. Students will create images, posters, advertisements, business cards, magazine covers, senior portraits, t-shirt designs, and brochures. Everything learned can be applied to the school yearbook and newspaper. Students will learn Adobe Photoshop, InDesign, and Illustrator. Other skills learned are problem-solving, technology integration, and meeting deadlines. Students are eligible for FBLA membership.

Prerequisite: Computer Applications recommended.

Open to all grade levels.

1 unit

Advanced Graphic Arts/Desktop Publishing (Graphic Design)

Do you want to learn advanced concepts of Adobe Photoshop, InDesign and Illustrator? In this course, students will build on their graphic design knowledge and work like a graphic design business. If you are looking at a career in Marketing, Communications, Graphic Design, Writing, Commercial Art, Web Design and Programming, this class will give you the basic skills. Students will get to create print and/or web documents for in-school and community clients. Students will create the graphics for the Hallway TV's. Other skills learned are problem-solving, critical thinking, teamwork, technology integration, and meeting deadlines. Students are eligible for FBLA membership.

Prerequisite: Graphic Arts

Sophomores, Juniors and Seniors

½ unit or 1 unit, repeatable

Web Design

Do you want to learn HTML computer programming code? This semester course is an introduction to designing web sites. If you are looking at a career in Marketing, Communications, Graphic Design, Web Design and Programming, this class will give you the basic skills. You will apply design principles, color, and art; create graphics, use tables to display information, create online forms, text areas, and advanced lists; and learn the basics of how to debug an HTML document. Students will learn how to operate a camera, learn to use Google Sites and Adobe Dreamweaver and Photoshop software, and explore online web designing sites to use. Students are eligible for FBLA membership.

Prerequisite: none.

Open to all grade levels.

½ unit

Multimedia

Do you want to learn how to create, shoot and edit videos? This year-long course of broadcast video class will introduce students to create and manipulate images; create audio, interview clips; and import the use of images and clips into videos using CyberLink PowerDirector. If you are interested in a career in Communications, Video Marketing, Broadcast Journalism, and Strategic Communications, this class will give you an introduction to creating videos. You will learn video terminology, storyboarding, script writing, camera techniques, and interviewing methods. You will create sports hype videos, sports interview clips, organization and academic program promos, and the Pirate Plug weekly TV show each week. After-school work will be required for gathering video and interview footage. Students will be eligible to compete in FBLA related contests and Broadcast contests at Missouri Interscholastic Press Association (MIPA) Journalism Contest Day. Other skills learned are problem-solving, critical thinking, teamwork, technology integration, and meeting deadlines. Students are eligible for FBLA membership.

Prerequisite: none.

Open to all grade levels.

1 unit, repeatable

Business Technology

This semester course is designed to help students develop the qualities, knowledge and skills necessary for working in a business. Students will enhance computer application skills as they develop competencies needed by administrative support professionals. The content includes the use of technology to develop communication skills, the performance of office procedures tasks, the production of quality work using advanced features of business software applications and the production of high quality employment portfolios, and job-seeking documents. In addition, this course provides training or skills many employers find deficient dealing with other people, using the telephone, organizing work and handling other crucial tasks.

Prerequisite: none.

Open to all grade levels.

½ unit

Business Communications

This integrated communications course will focus on developing traditional business skills associated with the college and career readiness of reading, writing, and listening. Students will create a variety of presentations, research current business issues, develop job application materials, participate in mock interviews (face to face, phone, and Skype/FaceTime), explore career and college searches, and participate in leadership and team building development and activities. As a member of this class, you are eligible for FBLA membership.

Prerequisite: none.

Open to all grade levels.

½ unit

Personal Finance

Understanding and managing personal finances are key to one's future financial success. By learning how to take control of your money as a teenager, you can potentially avoid making huge money mistakes down the road. You need to know that your financial decisions have long-term consequences. The course content is designed to help the learner make wise spending, saving, and credit decisions and to make effective use of income to achieve personal financial success. Students will learn to apply decision-making skills to evaluate career choices and set personal goals. Students will also compete in the state-wide Stock Market Game competition.

This course satisfies the ½ unit required for graduation and can count as ½ of the required practical art unit. As a member of this class, you are eligible for FBLA membership.

Prerequisite: none.

Sophomores, juniors or seniors

½ unit

Accounting I

In Accounting I, students will learn to keep orderly records of a business--financial activities through the planning and preparation of financial records. Emphasis will be placed on entry-level record keeping skills. As a member of this class, you are eligible for FBLA membership.

Prerequisite: "C" in Algebra I

Sophomores, juniors or seniors

1 unit

Accounting II

Accounting II is an independent study course (offered during the Accounting I section) in which students will expand their basic accounting knowledge gained from Accounting I to include the areas of management, cost, and manufacturing accounting for partnerships and departmentalized corporations. An accounting business simulation is completed during both semesters. As a member of this class, you are eligible for FBLA membership.

Prerequisite: "C" in Accounting I

Juniors or seniors

1 unit

Introduction to Business

Students will learn research skills, communication and interpersonal skills, create and perform skills for getting employed, learn about different types of businesses, develop an economic awareness, make wise consumer choices, and introduction to entrepreneurship and personal finance. Students will also compete in the state-wide Stock Market Game competition. As a member of this class, you are eligible for FBLA membership.

Prerequisite: none.

Open to all grade levels.

½ unit

Business and Political Economics

This course will give the students a greater understanding of economics, ranging from the viewpoint of the individual consumer or small business owner, to the global economy. The course will study the law of supply and demand, forms of business, labor unions, government finances and influence on the economy, money and prices, inflation and deflation cycles. The course relates history and politics to the study of economics. As a member of this class, you are eligible for FBLA membership.

Prerequisite: "C" in Algebra I, Introduction to Business recommended.

Juniors and seniors

½ unit

Business and Sports Management

Students will learn how to manage their own business and/or work in managerial positions for a business. Students will gain knowledge of economic concepts, identify management responsibilities, demonstrate communication skills, demonstrate interpersonal skills, learn financial management issues, and explore careers in human resources. Students are also introduced to basic management principles as they relate to the business of sports. Such introductory areas include sports marketing, sports law, sports media, and recreational sports management. As a member of this class, you are eligible for FBLA membership.

Prerequisite: Introduction to Business recommended.

Sophomores, juniors and seniors

½ unit

Business and Criminal Law

This course is designed to acquaint students with the basic legal principles common to business and personal activities. It focuses on both the substance and the process of our legal system, and reflects many social and ethical issues. The course has great practical value as it provides background for professional explorations related to the law. Knowledge of business and personal law is useful for all students who eventually assume roles as citizens, workers, and consumers. Skills in critical thinking are reinforced in this course along with oral and written communication skills. Simulations, projects, teamwork, and leadership activities will provide opportunities for application of instructional competencies. As a member of this class, you are eligible for FBLA membership.

Prerequisite: Introduction to Business recommended.

Juniors or seniors

½ unit

FAMILY AND CONSUMER SCIENCES

Foods I

This course will focus on principles of nutrition and wellness, nutritional value of food, and food selection and preparation. Students will learn basic cooking methods and proper safety and sanitation in the kitchen. Good attendance is necessary to be successful in this course.

Freshmen, Sophomores, juniors or seniors

½ unit, 1st semester

Foods II

This course builds upon knowledge gained in Foods I course. More advanced food preparation will be performed in this class. There will be a focus on meal planning, food presentation, and special occasion cooking. International cuisine will also be studied and prepared.

Prerequisite: Completion of Foods I and teacher approval

Freshmen, Sophomores, juniors or seniors

½ unit, 2nd semester

Family Relations

This discussion class equips students for success in their present and future relationships. Topics include self-concept, family life, friendship, dating, engagement, and marriage. Problems that occur in relationships will also be discussed. An emphasis will be placed on teen relationships and the criteria necessary for their success.

Open to all grade levels

½ unit

Child Development I

This semester course serves as an introduction to the care of children. In this course, students will trace the development of children from conception through toddlerhood. Students will complete a project involving the "Real Care Infant" simulators. Parenting skills will also be addressed and emphasized.

Sophomores, Juniors or seniors

½ unit

Child Development II

This course builds upon the knowledge gained in Child Development I. Emphasis in this course will be placed upon child care and early childhood education. Preschool-age and elementary-age children will be studied. Students will complete practicum experience with preschool children at local childcare facilities. This hands-on experience will be a main component of the class.

Prerequisite: Completion of Child Development and teacher approval

Sophomores, Juniors or seniors

½ unit, 2nd semester

Personal Health

This course identifies health issues and/or problems facing the individual and society. Emphasis will be placed on how these issues impact the family. **This course satisfies the one-half unit of Health required for graduation.**

½ unit

Housing and Interior Design

This course explores human needs and designs in housing. Housing styles and types will be examined, as well as the home buying experience and renting vs. buying. The elements and principles of design will also be thoroughly covered during the course. Several major hands-on projects will be completed during the course, including a floor plan and design board.

Open to all grade levels

½ unit

Pathways to the Teaching Profession

If teaching is an interest or passion for you, now is the time to explore the profession and gain experience before college! Pathways to the Teaching Profession is a year-long program that focuses on the general theory and practice of learning and teaching; the basic principles of educational psychology; the art of teaching; the planning and administration of educational activities; school safety and health issues; and the social foundations of education. Students are required to enroll in Pathways to the Teaching Profession and Pathways to the Teaching Profession-Internship concurrently.

Juniors or seniors

1 unit

Pathways to the Teaching Profession-Internship

Pathways to the Teaching Profession-Internship is the second class in a two-course program designed for students who are considering the elementary or secondary teaching profession. This course provides a seamless pathway to study the profession through experience as a classroom intern. Students will be assigned to intern with district personnel. Students will complete reflection journals, prepare and present lessons, and work closely with students of their assigned supervising teacher. Students are required to demonstrate good moral character, work habits, responsibility, punctuality, and organizational skills. Students are required to enroll in Pathways to the Teaching Profession and Pathways to the Teaching Profession-Internship concurrently. **Students must have computer access (at home or at school) to complete weekly assignments online and are responsible for providing their own transportation to and from their internship assignment. Internship hours can count towards A+ Program.**

Juniors or seniors

1 unit

PHYSICAL EDUCATION

(1 unit required)

9th Grade Boy's Physical Education

This course is designed for students to establish a foundation for personal fitness habits and encourage active learning through skilled movements by teaching the following: physical fitness skills, flag football, basketball, volleyball, weight training, rope jumping, whiffle-ball, mat ball, pickle ball, badminton, and various recreational activities.

1 unit

9th Grade Girl's Physical Education

This course is designed for students to establish a foundation for personal fitness habits and encourage active learning through skilled movements by teaching the following: physical fitness skills, tennis, flag football, basketball, volleyball, weight training, rope jumping, softball, pickle ball, archery and various recreational activities.

1 unit

Advanced Physical Education (Boys)

This course is a combination of weight lifting and speed development with an emphasis on strength training. The class uses a variety of lifting strategies through-out the length of the course.

Sophomores, juniors, and seniors; freshmen are able to take the course if they attend the summer session weights at BHS.

½ unit or 1 unit

Advanced Physical Education (Girls)

This course is designed for students to actively exercise & improve their level of fitness and conditioning. This class will develop overall body strength with the use of the overload principle of weight training & aerobic conditioning.

Sophomores, juniors, and seniors; freshmen are able to take the course if they attend the summer session weights at BHS.

½ unit or 1 unit

Lifetime Sports (Boys and Girls)

This class furthers the development of leisure time activities for any age person. The class is offered for boys and girls and will include activities which both can participate in individually or as a co-ed activity. Activities include volleyball, softball, tennis, table tennis, badminton, pickle ball, ladder golf, basketball, wiffle ball, and mat ball.

Sophomores, juniors or seniors

½ unit or 1 unit

Walking for Fitness (Boys and Girls)

This course is designed for the student to increase their fitness level through walking. Students will learn various walking techniques, health benefits of walking, and fitness assessments.

Sophomores, juniors or seniors

½ unit or 1 unit

ELECTIVES

Teacher's Aide

Aides assist teachers in the classroom with various activities. Any student interested in being an aide must have signed permission from the teacher before enrolling in the class. Credit is pass/fail and does not count in the G.P.A. **Students may enroll in only one teacher's aide per year.**

Juniors or seniors

½ unit or 1 unit

Library Aide

Aides assist librarian in the media center with various activities. Any student interested in being an aide must have signed permission from the librarian before enrolling in the class. Credit is pass/fail and does not count in the G.P.A. **Students may enroll in only one library/teacher's aide per year. Must have a good attendance record.**

Sophomores, juniors or seniors.

½ unit or 1 unit

Office Aide

Aides assist in the high school office with various activities. Any student interested in being an aide must have signed permission from the principal's secretary before enrolling in the class. Credit is pass/fail and does not count in the G.P.A. **Students may enroll in only one office/teacher's aide per year.**

Juniors or seniors

½ unit or 1 unit

Hannah Cole Primary Teacher's Aide

Aides assist Hannah Cole Primary teachers in the classroom with various activities. Any student interested in being a TA must have signed permission from counselor before enrolling in the class. Must have a 95% attendance rate and a 2.5 GPA. Credit is pass/fail and does not count in the G.P.A. **Students may enroll in only one teacher's aide per year.**

Juniors or seniors

½ unit or 1 unit

STUCO Leadership

This leadership course is a combination of Student Council and the development of personal and team leadership skills. It is designed to provide students with the opportunity to unlock leadership potential and to learn about, develop, and practice essential skills needed for effective leaders: Goal setting and project planning, problem solving and critical thinking, team building and cooperation, conflict management, communication and public speaking, etc. A variety of Student Council and community service projects will be completed. This course is strongly suggested for elected upperclassmen STUCO members, but not required.

Sophomore, junior and senior elected members of Student Council (Student Body Officers, Class Officers, and Representatives)

½ unit

CROSS-CATEGORICAL CLASSES

Adaptive Physical Education

This course is designed to give students the opportunity to acquire the skills and methods to become physically fit for a lifetime through sport, exercise, and knowledge. We will discuss, practice, and examine the benefits of an active lifestyle. All activities will meet each individual need through either one-on-one work or small group work when needed. Individual and team activities will be promoted, as these are educational experiences to be gained through both.

1 unit

Basic English Language Arts

This course is designed to improve the student's reading, writing, comprehension, and spelling skills. Students will learn how to write sentences, paragraphs, and stories. Reading comprehension skills will be developed using an individualized approach through novels, short stories, newspaper articles, and magazines.

1 unit

Basic Math

This course will focus on the math skills necessary to survive in your daily life. Students will concentrate on learning basic facts involving addition, subtraction, multiplication, and division. Students will then move on to the more complex skills such as fractions, decimals, per cents, etc. All work is done on an individual basis.

1 unit

Basic Social Studies

The course is designed to be an individualized study of the community and its resources. Missouri life, basic geography, and community citizenship will also be discussed. This course will provide students an opportunity to fulfill the graduation requirements for the U.S. Constitution and the Missouri Constitution.

1 unit

Basic Science

This course is designed to introduce students to characteristics of different sciences which we encounter in our living world. Students will investigate ecology and how it affects us and Earth. Cell biology will be covered to help in understanding what we are made of and how our bodies work at the cellular level. Genetics will be studied which includes what makes each of us unique and why and how traits are passed on to each generation. Scientific inquiry will be taught and used throughout each unit.

1 unit

Learning Strategies

This course is designed to give students additional assistance in achieving success in the academic areas. Specific skills will be focused on in the areas of how to study, learning styles, and general comprehension. This class earns pass/fail credit.

1 unit

Skills for Occupations & Living

This class provides opportunities for students to explore family relationships and personal development, personal management, and planning for the future. Topics may include any combination of the following: Consumerism, money management, community involvement and participation, housing, food, and clothing choices and care. Both semesters will also cover transition issues and may include such topics as post-secondary education, careers and career planning, job readiness, and employment.

1 unit

Social Skills

In this course, students will learn the skills needed to make an appropriate impression in their academic careers and personal lives. These skills are essential to making a lasting impact on others as well as handling personal matters. Study skills will also be greatly emphasized in this class.

1 unit

Supervised Work Study

For sophomores, juniors, and seniors desirous of supervised work experience. Juniors or seniors may work full-time. All work stations must be approved by the school. This class earns pass/fail credit.

Units based on work hours.



BTEC Course Descriptions

Information regarding Dual Credit and Articulation

Dual Credit

College credit earned through dual credit is possible when the subject matter covered and the competencies mastered are equivalent to those required in a college-level class as identified by the post-secondary institution. In some classes there is a fee for the award of dual credit; however, dual credit is transcribed for the student whether or not the student attends that college or university after high school graduation and the transcribed credit is generally transferable to other post-secondary institutions.

Articulation

College credit awarded through articulation gives the student a jump-start into a technical degree program by allowing the student to bypass certain entry-level classes at the college level for which the student has already mastered the coursework. Articulated credit can only be used at pre-designated schools and is free. The credit is transcribed after the student completes the high school course and enrolls, and attends the institution awarding the credit. (Ask the class teacher about specific grade, attendance, portfolio, and/or other possible requirements.)

AGRICULTURAL EDUCATION

The agriculture industry encompasses the food, fiber, conservation, and natural resource system employing over 20% of the nation's workforce. These courses are designed for students ranging from traditional production agriculture background to the non-traditional agriculture/urban background, and are available to all students who are interested in learning the knowledge and skills related to the agriculture industry (plants, animals, conservation, food science, landscaping, welding, leadership/communications, public speaking, etc.). Students will have an opportunity to earn industry recognized credentials through the Missouri Agricultural Skills and Knowledge Assessment in Ag Mechanics, Agronomy, Dairy Cattle Evaluation, Dairy Foods, Entomology, Farm Management, Floriculture, Forestry, Horse Evaluation, Livestock Evaluation, Meats Evaluation, Nursery/Landscape, Poultry, and Soils. Students can participate in the National FFA Organization.

Courses may be used as articulated credit for a maximum of 15 FREE college credit hours with State Fair Community College and 3 credit hours with State Technical College of Missouri (formerly Linn State Technical College) when completed with a recommendation from the instructor and counselor and the appropriate grade. Dual credit opportunities are also available through State Fair Community College. Agriculture courses are considered a practical art or elective credit on a student's Personal Plan of Study. Additional graduation requirements may be met through completion of agricultural classes.

***-Counts towards the 3 for 1 General Science Credit (statewide agreement)**

**** -Accepted by University of Missouri-Columbia for the 3 for 1 General Science Credit**

****^ -Accepted by University of Missouri-Columbia as a substitution for an Economics/Social Studies Credit for some majors**

****^ -Counts towards the ½ Credit of Personal Finance. The state EOC test must be taken with this course.**

+ -Counts towards a Communication Arts/Language Arts Credit for high school graduation as Written Communications

Agricultural Science I **

This entry level/Freshman agricultural class covers topics such as careers in agriculture, leadership/FFA activities, beginning record keeping, introduction to animal nutrition and production, introduction to agricultural mechanization, and supervised agricultural experience. SAE, record keeping & FFA involvement is required. **Articulated credit opportunity listed below.**

Open to all grade levels

1 unit

State Fair Community College Course: AGRI 175 Occupational Internship (2-4 credits)

Agricultural Science II**

This is an intermediate level/Sophomore agricultural class in which topics such as advanced discussions of careers in agriculture, leadership/FFA activities, record keeping, and supervised agricultural experience will be taught. Also, topics of plant, crop, and soil sciences, entomology, conservation/natural resources, and horticulture will be introduced. More advanced agricultural mechanization techniques will also be introduced. SAE, record keeping & FFA involvement is required. **Articulated credit opportunity listed below.**

Prerequisite: Ag Science I or instructor's consent.

Sophomores, Juniors and Seniors

1 Unit

State Fair Community College Course: AGRI 175 Occupational Internship (2-4 credits)

State Technical College of Missouri (formerly Linn State Technical College) Course: CTG 106 Fundamentals of Turf & Grounds (3 credit hours if Ag Science II and one of the following Greenhouse Operations & Management I/II or Landscape and Turf Grass Management are completed)

Agricultural Construction

This is an advanced laboratory course which allows for construction of major metal projects through using welding and large wood projects. SAE, record keeping & FFA involvement is required. **Articulated credit opportunity listed below.**

Prerequisite: Ag Science II or instructor's consent.

Juniors and Seniors

1 or 2 Units, repeatable

State Fair Community College Course: AGRI 175 Occupational Internship (2-4 credits)

Agricultural Management and Economics (available 2021-2022) **^

This course is an advanced agricultural class that is geared towards college bound students. Topics such as farm management, agricultural economic principles, agricultural business management, and tax preparation will be taught. A variety of written, visual, and technological applications will be used to convey and teach the material. SAE, record keeping & FFA involvement is required. This course will also meet the ½ credit personal finance requirement. **Dual and Articulated credit opportunity listed below.**

Prerequisite: Ag Science II or instructor's consent.

Juniors and Seniors, Offered every other year in ODD years.

1 Unit and/or ½ Unit Personal Finance

State Fair Community College Course: AGRI 131-Intro to Agribusiness Systems (3 credit hours)-articulated or dual credit & AGR 1175 Occupational Internship (2-4 credits)

Agricultural Leadership & Communications +

An advanced level communications/agricultural course designed to instruct in research, composition, and public speaking in the areas of informational, demonstration, persuasive, and motivational papers and speeches, understanding of MLA and APA citations, overview and review of basic English/language arts components (grammar, spelling, sentence structure, punctuation), weekly debate and journaling on current agricultural issues, development of job application materials including resumes and cover letters, mock interviews (face to face and phone), career and college searches, leadership and team building development and activities, agricultural sales research and presentations, development of newsletters, press releases (written and radio) and news articles, and reading comprehension and written response of motivational, team building, and leadership books. **Articulated credit opportunity listed below.**

Juniors and Seniors

1 Unit and/or 1 Unit Written Communications

State Fair Community College Course: AGRI 175 Occupational Internship (2-4 credits)

Agricultural Power (available 2021-2022)

This is an introductory course to small engines, but advanced topics will be taught. These topics are maintenance, repair, adjustment, and overhaul of small engines. SAE, record keeping & FFA involvement is required. **Articulated credit opportunity listed below.**

Prerequisite: Ag Science II or instructor's consent.

Juniors and Seniors, Offered every other year in ODD years.

½ Unit

State Fair Community College Course: AGRI 175 Occupational Internship (2-4 credits)

Agricultural Structures (available 2021-2022)

This course includes electrical wiring, electrical motors, concrete masonry, plumbing and sewage disposal, farm fences, product handling and processing equipment, and farm buildings. **Articulated credit opportunity listed below.**

Prerequisite: Ag Science II or instructor's consent.

Juniors and Seniors, Offered every other year in ODD years.

½ Unit

State Fair Community College Course: AGRI 175 Occupational Internship (2-4 credits)

Animal Science (available 2020-21) **

This is an advanced course in animal production, marketing, breeding, and nutrition. In depth discussions about biotechnology and waste management may also be included. Keeping accurate production records and selection of good stock will also be included. SAE, record keeping & FFA involvement is required. **Dual and articulated credit opportunity listed below.**

Prerequisite: Ag Science II or instructor's consent.

Juniors and Seniors, Offered every other year in EVEN years.

1 Unit

State Fair Community College Course: AGRI 108-Animal Science (3 credit hours)-articulated or dual credit & AGR 1175 Occupational Internship (2-4 credits)

Conservation of Natural Resources (available 2020-21) **

Introduction of topics and hands on experience of the natural resources/conservation industry. Topics will range from an understanding of wildlife and fish management, careers in the natural resource/conservation industry, forest management, identification of wildlife, and general conservation practices. There will be the opportunity to create wildlife food plots. SAE, record keeping & FFA involvement is required. **Articulated credit opportunity listed below.**

Prerequisite: Ag Science II or instructor's consent.

Juniors & Seniors, Offered every other year in EVEN years.

1 Unit

State Fair Community College Course: AGRI 175 Occupational Internship (2-4 credits)

Floriculture (available 2021-2022) **

Introduction of topics and hands on experience of the floriculture industry. Topics will range from an understanding of flower shop operation, floral design, careers in floriculture industry, and identification of floriculture crops. There will be the opportunity to create floral arrangements. SAE, record keeping & FFA involvement is required. **Articulated credit opportunity listed below.**

Prerequisite: Ag Science II or instructor's consent.

Juniors and Seniors, Offered every other year in ODD years.

1 Unit

State Fair Community College Course: AGRI 175 Occupational Internship (2-4 credits)

Greenhouse Operation and Management I **

Introduction of topics and hands on experience of the greenhouse industry. Topics will range from an understanding of greenhouse operation, plant propagation, and careers available in the greenhouse industry. There will also be the opportunity to raise and sell your own plants. SAE, record keeping & FFA involvement is required. **Articulated credit opportunity listed below.**

Prerequisite: Ag Science II or instructor's consent

Juniors and Seniors

1 Unit

State Fair Community College Course: AGRI 129 General Horticulture (3 credit hours)-articulated or dual credit & AGR 1175 Occupational Internship (2-4 credits)

State Technical College of Missouri (formerly Linn State Technical College) Course: CTG 106 Fundamentals of Turf & Grounds (3 credit hours if Ag Science II and one of the following Greenhouse Operations & Management I/II or Landscape and Turfgrass Management are completed)

Greenhouse Operation and Management II **

Advanced topics and hands on experience of the greenhouse industry. Advanced understanding and application of greenhouse operation, plant propagation, and careers available in the greenhouse industry. There will also be the opportunity to raise and sell your own plants. SAE, record keeping & FFA involvement is required. **Dual and Articulated credit opportunity listed below.**

Prerequisite: Greenhouse Operations and Management I and Instructor's Consent.

Seniors

1 Unit

State Fair Community College Course: AGRI 129 General Horticulture (3 credit hours)-articulated or dual credit & AGR 1175 Occupational Internship (2-4 credits)

State Technical College of Missouri (formerly Linn State Technical College) Course: CTG 106 Fundamentals of Turf & Grounds (3 credit hours if Ag Science II and one of the following Greenhouse Operations & Management I/II or Landscape and Turfgrass Management are completed)

Landscaping & Turf Grass Management (available 2020-21)

Introduction of topics and hands on experience of the nursery and landscaping industries. Topics will range from an understanding and identification of nursery crops, transplanting techniques, landscape design, and maintenance of woody ornamentals and landscapes. Students will learn about turf grass production and management for lawns and landscapes and the use in sports areas such as golf courses, baseball, soccer, and football fields. Computerized landscape design programs will be utilized to design landscapes including plants, sidewalks, walls, etc. There will also be the opportunity to raise and landscape an area of the community or school. SAE, record keeping & FFA involvement is required. **Dual and Articulated credit opportunity listed below.**

Prerequisite: Ag Science II or instructor's consent.

Juniors and Seniors, Offered every other year in EVEN years.

1 Unit

State Technical College of Missouri (formerly State Technical College of Missouri) Course: CTG 106 Fundamentals of Turf & Grounds (3 credit hours if Ag Science II and one of the following Greenhouse Operations & Management I/II or Landscape and Turfgrass Management are completed)

SAE Internship

Students who have completed three years of agricultural courses are eligible for a SAE Internship (supervised agricultural experiences) for one to three hours per day. For every ten hours of work averaged per week, a student can earn ½ credit per semester. For every twenty hours of work averaged per week, a student can earn 1 credit per semester. For every thirty hours of work averaged per week, a student can earn 1 ½ credits per semester. This internship must be taken in conjunction with another agricultural course. Some internships may receive pay from an employer where others do not depending on the type of business or industry. Students must have reliable transportation and signed parent permission to participate, along with instructor and BTEC director approval. Students will also be required to be subject to onsite evaluations and maintain a financial record book documenting their work. **Articulated credit opportunity listed below.**

Seniors

1/2 to 3 Units credits, repeatable

State Fair Community College Course: AGRI 175 Occupational Internship (2-4 credits)

Agricultural Education Department Guidelines

1. All freshmen and first year agricultural students must enroll in Agricultural Sciences I. Only under extreme circumstances, and with instructor approval, can a student be enrolled in a different class.
2. All second-year agricultural students must enroll in Agricultural Sciences II. Only under extreme circumstances, and with instructor approval, can a student be enrolled in a different class, one exception being that if a student took Agricultural Science I as a sophomore or junior, they can enroll in one of the upper level classes.
3. If a student is an upper level student wanting to enroll for the first time, they must take Agricultural Science I, but can also enroll in upper level classes. Exceptions will be made with instructor approval.
4. Students enrolled in agricultural classes will be required to have an SAE, keep a record book and be involved in FFA. This is because these are intracurricular activities that are required within the curriculum. For some reason, if a student cannot afford involvement, help will be given to them so they will be able to be involved.

AUTOMOTIVE TECHNOLOGY

Consumer Car Care

This course is designed to provide students with the knowledge to make economical decisions and take preventative measures needed as an automotive consumer. This course provides students with basic knowledge and experience in owning and maintaining an automobile. Students will have the opportunity to gain knowledge and skills on the following course topics:

- Introduction and how cars work
- Auto care and cleaning
- Buying an automobile
- Fluid level check
- Safety around the automobile
- Electrical systems
- Basic tools

Sophomores, juniors, and seniors

½ unit

The automotive program is designed to provide students with training in both basic consumer car maintenance and entry-level technician skills as outlined by the National Institute for Automotive Service Excellence. Students completing the Auto Technology class will have the opportunity to earn Automotive Service Excellence Certifications (ASE). Students can participate in SkillsUSA, a career and technical student organization, focused on preparing students for careers in trade, technical, and skilled service occupations.

Courses may be used as articulated credit for a maximum of 16 FREE college credit hours with State Fair Community College, 12 FREE college credit hours at the University of Northwestern Ohio, and 3 credit hours with State Technical College of Missouri (formerly Linn State Technical College) when completed with a recommendation from the instructor and counselor and the appropriate grade.

Automotive Technology Theory I & II

This course is designed to prepare students for an entry-level position as an automotive technician by providing the necessary career skills and knowledge. This is a two-year program that provides students the opportunity to gain knowledge and skills needed in the automotive industry. Computer skills are necessary. Second-year students in Automotive Technology Theory II and Automotive Technology Laboratory II will have the option of participating in an internship during 2nd semester, where they will be able to go to a shop and gain hands-on experience. Students must have a comprehensive grade of C- or better and recommendation of the instructor in order to participate in an internship. Students will have the opportunity to take ASE test in the following subject areas: Steering and suspension, brakes, electrical, engine performance, engine repair, automatic transmission, manual transmission, heating and a/c, maintenance light repair, and AST to earn industry recognized credentials.

Main concepts covered are:

- Automotive Technology
- Electricity
- Engine performance
- Suspension and steering system
- Brakes
- Passenger comfort

Prerequisite: Must pass Communication Arts I & II and Algebra I. To return to Automotive Technology Theory II, students must pass Automotive Technology Theory I with a grade of C- or better. Auto Technology I students must earn a C- or better at the end of 1st semester to remain in the class for second semester. Any student planning to take the first year of Auto Technology must submit an ASVAB score with the BTEC application. Application and interview process will determine placement.

Juniors or seniors

1 unit

Automotive Technology Laboratory Experience I & II (2 concurrent class periods)

Students will be provided with "live shop work and automotive shop operations. Students use state-of-the-art computerized diagnostic equipment to enhance the learning process on late model vehicles using "on board" computer control systems. Automotive Technology offers, but is not limited to, the following job opportunities: Auto Service Specialist, Service Manager, and Service Writer. Emphasis is placed on safety in all phases of the coursework. Near the completion of the course, qualified students may be placed in an internship with local businesses.

Prerequisite: Must have Automotive Technology Theory concurrently. To return to Automotive Technology Laboratory Experience II, students must pass Automotive Technology Laboratory Experience I with a grade of C- or better. Auto Technology I students must earn a C- or better at the end of 1st semester to remain in the class. Any student planning to take the first year of Auto Technology must submit an ASVAB score with the BTEC application. Application and interview will determine placement.

Juniors or seniors

2 concurrent class periods = 2 units of credit

COMPUTER SCIENCE & INFORMATION TECHNOLOGY

BTEC's computer science and information technology programs offer students recognized entry level certifications in computer and network maintenance pathway. PLTW's innovative Cybersecurity program offers high school students a springboard into the exploding field of cybersecurity. PLTW Computer Science Principles builds knowledge and skills in computer science, but also empower students to develop those important 21st century skills. The Information Technology Fundamentals course prepares students for the CompTIA ITF+ Certification exams. Students can participate in SkillsUSA, a career and technical student organization, focused on preparing students for careers in trade, technical, and skilled service occupations. Dual credit opportunities are available through State Fair Community College.

Computer Game Design

This video game design course provides an opportunity for students to immerse themselves in the world of video game design and development. Students will explore conceptual and technical aspects of contemporary video game creation. Students will expand their understanding of the role technology plays in modern society and the future of high-quality jobs with these transferable skills. The curriculum aligns with the International Game Developers Association (IGDA). Students will learn about gaming, computerized gaming, and the evolution of gaming along with the artistic aspects of perspective, design, and animation. The technical aspects discussed are 3D modeling, collision theory, and programming logic, along with knowledge of computer gaming hardware.

Prerequisite: Prior knowledge of web design and HTML are helpful, but not required.

Open to all grade levels, (if room available)

1 unit (not repeatable)

PLTW Computer Science Principles

PLTW Computer Science courses engage students in interdisciplinary activities that not only build knowledge and skills in computer science, but also empower students to develop essential skills such as problem solving, critical and creative thinking, communication, collaboration, and perseverance. The program's courses empowers students with in-demand knowledge and skills they will use in high school and for the rest of their lives, on any career path they choose. Using Python as a primary tool and incorporating multiple platforms and languages for computation, this course aims to develop computational thinking, generate excitement about career paths that utilize computing, and introduce professional tools that foster creativity and collaboration. Computer Science Principles helps students develop programming expertise and explore the workings of the Internet. Projects and problems include app development, visualization of data, cybersecurity, and simulation.

Open to all grade levels (if room is available)

1 unit (not repeatable)

Information Technology Fundamentals

Information Technology (IT) is a fast-growing field of industry professionals. Nearly 5.4 million individuals work as technology professionals across the U.S., representing a recent increase of 2.1%, or nearly 110,000 net new jobs. This course will help you determine if this is the field for you. This course covers a wide variety of topics such as IT concepts and terminology, infrastructure (such as setting up and installing common peripheral devices to a laptop/PC or secure a basic wireless network), applications and software (such as understanding the various components of an operating system and explaining the purpose of methods of application architecture), software development, database fundamentals, and security. The Information Technology Fundamentals course prepares students and gives them the knowledge necessary for industry-standard certifications, such as CompTIA ITF+. Our Repair It Forward charitable chapter gives students hands-on, real-world experience in rebuilding computers.

Open to all grade levels (if room is available)

1 unit

PLTW Cybersecurity

PLTW Computer Science engages students in interdisciplinary activities that not only build knowledge and skills in computer science, but also empower students to develop essential skills such as problem solving, critical and creative thinking, communication, collaboration, and perseverance. The program's courses empowers students with in-demand knowledge and skills they will use in high school and for the rest of their lives, on any career path they choose. Cybersecurity introduces the tools and concepts of cybersecurity and encourages students to create solutions that allow people to share computing resources while protecting privacy. Nationally, computational resources are vulnerable and frequently attacked; in Cybersecurity, students solve problems by understanding and closing these vulnerabilities. This course raises students' knowledge of and commitment to ethical computing behavior. It also aims to develop students' skills as consumers, friends, citizens, and employees who can effectively contribute to communities with a dependable cyber-infrastructure that moves and processes information safely. **Dual credit opportunity listed below.**

Sophomores, juniors, and seniors

1 unit

State Fair Community College Course: NET 106 Introduction to Network Security (3 credits)
--

HEALTH SCIENCES

According to U.S. News and World Report, 20 of the 25 best jobs of 2018 are healthcare related. Students will focus on the fundamentals of healthcare, communication, infection control, and health promotion. Health Science courses are a must for anyone thinking about a career in the health field. Students can earn certifications in Phlebotomy, EKG, Medical Assisting, and Certified Nurse Assisting. These certifications allow them to be employable out of high school as well as more qualified for health career programs at the college level. There are classes for all grade levels. Students in Health Sciences classes can participate in HOSA, a career and technical student organization, to empower HOSA-Future Health Professionals to become leaders in the global health community through education, collaboration, and experience.

Students can also earn 6 hours of dual credit in Medical Terminology, 2 hours of articulated credit in Fundamentals I in Nursing from SFCC and 3 hours of dual credit from Missouri S & T in Anatomy and Physiology I and II.

Various classes within the Health Science pathway can be classified as a general science credit to meet graduation requirements

The health and medical fields are growing faster than any other career field. Here are just a few of the exciting career opportunities available to you:

Nurse Assistant	Surgery Technician	Nurse Practitioner
Doctor	Nurse	Dental Hygienist
Physical Therapist	Medical Assistant	Paramedic/EMT
Veterinarian	Respiratory Therapist	Lab Technician
Biomedical Engineer	Pharmacist	Occupational Therapy Assistant
Physician's Assistant	X-Ray Technician	Psychologist

Introduction to Health Science

This course is designed for students interested in pursuing a career in health care. This course provides an overview of the therapeutic, diagnostic, health informatics, support services, and biotechnology research and development systems of the healthcare industry. Instruction includes, but is not limited to, beginning anatomy and physiology, medical terminology, medical skills, medical ethics, diseases, and disorders. This course is meant to be paired with the Health Science I Laboratory for the purpose of gaining the state certification for Certified Nursing Assistant (CNA).

Prerequisite: Must have passed Communication Arts I; good math skills recommended

Sophomores, juniors, or seniors

½ unit

Health Science Laboratory I (2 concurrent class periods)

Course topics include anatomy, physiology, first aid, basic health care skills, medical terminology, and human relations. Students will work toward CPR certification from the American Heart Association. During the year, students will spend some class time working in the community to apply their skills in a wide variety of health care settings including radiology, laboratory, pharmacy, physical therapy, veterinary care, dietary, dental, and other areas of interest. Students will also have the opportunity to obtain the Certified Nurse's Assistant certification. All students will build personal portfolios, which include job applications, resumes, and cover letters.

Articulated credit opportunity listed below.

Juniors and seniors

2 concurrent class periods = 2 units of credit

IMPORTANT: To continue enrollment in this course for 2nd Semester each student MUST PASS the hands-on practicum, pass three exams with 80% or higher, and have a grade of at least 70% or higher on all 1st Semester coursework. Students will not be allowed to participate in the 2nd Semester Clinical Experience unless all requirements have been met.

State Fair Community College Course: NURS 114 Nursing Fundamentals I (2 credits hours of articulated credit with B or better in the course)

High School Science Credit: After successful completion of Introduction to Health Science and Health Science Laboratory, students can earn one (1) general science credit toward their graduation requirements.

Health Science Laboratory II Health Care Specialist (2 concurrent class periods)

This course is designed for those who want to increase their employability skills in the Healthcare Field. These courses will be set-up as online courses with hands-on lab time. Multiple certifications may be acquired. Fees may apply. Students may work toward the following certifications: **(ALL HEALTH LAB II COURSES ARE PENDING DESE APPROVAL)**

Pharmacy Technician Certification

Employment of Pharmacy Technicians is expected to grow by 32 percent from 2010 to 2020, much faster than the average for all occupations. As a result of advances in pharmaceutical research, more prescription medications are being used to fight diseases. With a National Certification for Pharmacy Technician (CPhT), you will be prepared for this job market. The healthcare field is rapidly growing and Pharmacy Technicians are in demand in places like clinics, drugstores, in-store pharmacies and mail-order pharmacies. Skilled workers are needed to keep up with rising demand. You will complete 12 Unit modules (approximately 120 hours) and 60 clinical hours in a local pharmacy. Must graduate high school to take the certification exam but may register to take it up to 60 days prior to graduation. **(PENDING DESE APPROVAL)**

Prerequisite: Health Science Laboratory I. Passed criminal background check and drug screening. Fees may apply.

Seniors only

2 concurrent class periods = 2 units of credit

Phlebotomy Technician Certification (CPT)

With a CPT certification, you will have the credentials you need to set yourself apart from other applicants as you embark on a rewarding healthcare career. As more employers require phlebotomy certifications, a CPT will help improve your marketability in a growing and rewarding field. Hospitals, laboratories and other employers have an increasing demand for phlebotomists. Most seek, and many require, a professional certification. Each candidate for the CPT certification must be able to provide evidence that he/she has successfully performed a minimum of thirty (30) venipunctures and ten (10) capillary sticks on live individuals. At the completion of the program, the student will sit for the Phlebotomy Technician Certification National Exam. Students must pass a background check. A candidate who is scheduled to graduate from an accredited high school may take the certification exam and receive a Provisional Certification up to twelve (12) months before graduation as long as all certification eligibility requirements are met. **(PENDING DESE APPROVAL)**

Prerequisite: Health Science Laboratory I. Students must be within 12 months of receiving their high school diploma. May earn multiple certifications. Fees may apply.

Seniors only

2 concurrent class periods = 2 units of credit

Certified EKG Technician (CET)

EKG rhythms provide important data for the diagnosis of heart conditions. As a Certified EKG Technician (CET), you will have the credentials nearly all healthcare employers require to perform the critical tasks of administering EKGs, as well as Holter monitoring and stress testing. At the completion of the program, the student will sit for the Certified EKG Technician National Exam. Students must pass a background check. A candidate who is scheduled to graduate from an accredited high school may take the certification exam and receive a Provisional Certification up to twelve (12) months before graduation as long as all certification eligibility requirements are met. Each candidate for the CET certification must be able to provide evidence that he/she has successfully performed a minimum of ten (10) EKGs on live individuals. **(PENDING DESE APPROVAL)**

Prerequisite: Health Science Laboratory I. Students must be within 12 months of receiving their high school diploma. May earn multiple certifications. Fees may apply.

Seniors only

2 concurrent class periods = 2 units of credit

Medical Terminology I (online) (semester course)

This online course is designed for students interested in pursuing many careers in health care. This course covers the basic knowledge and understanding of medical language and terminology used by healthcare professionals. Students will analyze individual word parts, such as prefixes, suffixes, and word roots, along with learning body system dynamics and practical medical language. Students will learn the basic components of medical terminology as it relates to each body system. Abbreviations and their appropriate usage are represented. Students will be able to complete element recognition and interpretation with each lesson and complete a final exam. Even though the course is online, Mrs. Stock is the online instructor, and students will report to Mrs. Stock during class time for proctoring. If a student needs to stay at the home high school to take this online course, arrangements can be made through the BTEC Counseling Office. Online learning fee for dual credit students will apply. **Dual credit opportunity listed below.**

Prerequisite: Must have passed Communication Arts II.

Juniors or seniors

½ unit

State Fair Community College Course: HEOC 120 Medical Terminology (3 credits)

Medical Terminology II (online) (semester course)

This online course is designed for students interested in pursuing many careers in health care. This course covers a more in-depth knowledge and understanding of medical language and terminology used by healthcare professionals. Students will analyze individual word parts, such as prefixes, suffixes, and word roots, along with learning body system dynamics and practical medical language. Students will learn the basic components of medical terminology as it relates to each body system. Abbreviations and their appropriate usage are represented. Students will be able to complete element recognition and interpretation with each lesson and complete a final exam. Even though the course is online, Mrs. Stock is the online instructor, and students will report to Mrs. Stock during class time and for proctoring. If a student needs to stay at the home high school to take this online course, arrangements can be made through the BTEC Counseling Office. Online learning fee for dual credit students will apply. **Dual credit opportunity listed below.**

Prerequisite: Must have passed Communication Arts II and Medical Terminology I.

Juniors or seniors

½ unit

State Fair Community College Course: HEOC 122 Medical Terminology II (3 credits)

PLTW – Principles of Biomedical Science

The first course in the nationally recognized Project Lead the Way program investigates biomedical sciences through problem-based learning and hands-on projects. Designed to develop students' collaborative, critical-thinking and problem-solving skills; while investigating a case study, students examine autopsy reports, investigate medical history, and explore medical treatments that might have prolonged the person's life. Activities and projects introduce students to human physiology, medicine and research processes, laying the scientific foundation for subsequent PLTW courses in the Biomedical Sciences Program. **Dual credit opportunity listed below.**

Prerequisite: All PLTW courses require concurrent enrollment in (or satisfactory prior completion of) appropriate grade level science courses.

Open to all grade levels

1 unit

Missouri University of Science and Technology: BIO SCI 1943 Introduction to Human Anatomy and Physiology. (3 credits)

Students are encouraged to contact their prospective university to see how the credit will transfer.

High School Science Credit: After successful completion of PLTW Principles of Biomedical Science, students can earn one (1) general science credit toward their graduation requirements.

PLTW – Human Body Systems

Students examine the interactions of human body systems as they explore identity, power, movement, protection, and homeostasis in the body. They will study the structure and function of human organ systems, including the endocrine, cardiovascular, lymphatic, respiratory, digestive, urinary and reproductive systems. Exploring science in action, students build organs and tissues on a skeletal Manikin; use data acquisition software to monitor body functions such as muscle movement, reflex and voluntary action, and respiration; and take on the roles of biomedical professionals to solve real-world medical cases. **Dual credit opportunity listed below.**

Prerequisite: Principles of Biomedical Sciences

Sophomores, Juniors, or Seniors

1 unit

Missouri University of Science and Technology: BIO SCI 1953 Introduction to Human Anatomy and Physiology II. (3 credits)

Students are encouraged to contact their prospective university to see how the credit will transfer.

JUNIOR RESERVE OFFICER TRAINING CORPS (JROTC)

U.S. Army Junior Reserve Officers' Training Corps (JROTC) is a congressionally mandated program that focuses on the youth-oriented mission "Motivating Young People to be Better Citizens". It is one of the largest youth programs in the world with more than 310,000 high school students participating annually while enrolled in over 1,700 secondary educational programs and encompasses a myriad of teaching goals focused on leadership, teamwork, character education, personal responsibility, a sense of accomplishment, and service to the nation. It is NOT exclusively for those students who plan to enlist in the military. However, if students complete the program and enlist in the military, they may be able to enter at an advanced rank. The BTEC JROTC program is an accredited program and is designated as an Honor Unit with Distinction.

Leadership Education Training I (LET I / JROTC I)

This first-level class is an introduction to leadership development. It introduces the student to JROTC, to leadership theory, drill and ceremonies, hygiene and first aid, maps and map reading, techniques of oral communication, the uniform, and to selected optional subjects. Students will develop a portfolio of accomplishments. **Students may choose to take this course along with L.E.T. II to fulfill 1 unit of physical education requirement for graduation.**

Recommendations: Willingness to wear the uniform with pride

Open to all grade levels

1 unit

Leadership Education Training II (LET II / JROTC II)

This second-level class is intermediate leadership development. The student works in intermediate leadership, first aid, map reading, techniques of oral communications, marksmanship and safety, drill and ceremonies, people, places and times, services/ROTC opportunities, and selected optional subjects. Students will develop a portfolio of accomplishments. **Completion of L.E.T. II satisfies the required 1 unit of PE for graduation.**

Recommendations: Willingness to wear the uniform with pride

Sophomores-seniors

1 unit

Leadership Education Training III (LET III / JROTC III)

This third-level class is applied leadership development. The student applies leadership, map reading/navigation, techniques of oral communications, marksmanship and safety, service/ROTC opportunities, and selected optional subjects. Students will develop a portfolio of accomplishments. Recommendations: Willingness to wear the uniform with pride

Juniors or seniors

1 unit

Leadership Education Training IV (LET IV / JROTC IV)

This fourth-level class is an advanced leadership development program. The student works in advanced leadership techniques, drill ceremonies, advanced communications, staff functions and procedures, and selected optional subjects including scholarship and college applications. Students will develop a portfolio of accomplishments.

Recommendations: Willingness to wear the uniform with pride

Seniors

1 unit

MARKETING

The top 2 fastest growing fields are marketing and sales, according to the US Department of Labor. Students will focus on fundamentals of marketing, advertising, human relations, economics and communication as well as product development, sales promotion, packaging and distribution. Marketing is a must for anyone thinking about a career in business. As a member of this class, you are eligible for DECA membership. DECA prepares emerging leaders and entrepreneurs in marketing, finance, hospitality and management in high schools and colleges around the globe. Students who complete two or more credit hours of marketing will take a MOASK test for their Technical Skills Attainment (TSA) exam.

Marketing

Marketing is a dynamic and exciting field. Marketing is often synonymously connected with advertising and promotion; however, these are just two facets of marketing. In addition to these two concepts, you will also learn about the consumer decision process, marketing segmentation, product development, pricing, and the stages of the product life cycle and their impact on the marketing mix. A primary goal of all marketing courses is for students to acquire skills that can be applied to today's workplace. This includes skills in leadership, teamwork, communication, problem-solving, and technology integration. To accomplish these goals and keep students actively learning, several projects will be completed throughout the course either as a team or individually.

Recommendation: Completion of ELA I, Multimedia or Graphic Arts, proficient computer skills, and membership in DECA is highly encouraged. **Articulated credit opportunity listed below.**

Open to all grade levels

1 unit

Advanced Marketing

This course is the continuation of Marketing and will require students to demonstrate the knowledge and skills they acquired in Marketing to real-world situations. Students will enjoy working in an online simulation, creating a marketing plan, and developing marketing strategies for real events and businesses. Students will use a variety of skills, attitudes, and abilities needed for success in today's workplace: Career planning, critical thinking, decision making and teamwork. **Articulated credit opportunity listed below.**

Prerequisite: Instructor approval and completion of marketing with a C- or better

Recommendation: Proficient computer skills, Multimedia or Graphic Arts and membership in DECA is required

Sophomores – Seniors

1 unit

State Fair Community College Course: BSMT 106 (3 credits) available upon completion of Marketing and Advanced Marketing
--

Fashion Marketing

This course prepares individuals to promote product lines/brands and organize promotional campaigns at the wholesale level to attract retailer interest, wholesale purchasing, and supply contracts. It includes instruction in wholesaling, wholesale advertising, selling, and customer relations. In addition, it will provide an exposure to merchandising terminology, activities and operations.

Prerequisite: Grade of C- or better in Marketing

Recommendation: Proficient computer skills and membership in DECA is required, Multimedia or Graphic Arts

Juniors and Seniors

½ unit

Personal Finance

Understanding and managing personal finances are key to one's future financial success. By learning how to take control of your money as a teenager, you can potentially avoid making huge money mistakes down the road. You need to know that your financial decisions have long-term consequences. The course content is designed to help the learner make wise spending, saving, and credit decisions and to make effective use of income to achieve personal financial success. Students will learn to apply decision-making skills to evaluate career choices and set personal goals. This course satisfies the ½ unit required for graduation and can count as ½ of the required practical art unit. As a member of this class, you are eligible DECA membership.

Prerequisite: None

Sophomores, Juniors and Seniors

½ unit

Retail Marketing

Operate a retail store and coffee shop right here at school! Students will have the opportunity to learn the concepts of retail sales, public relations, purchasing, inventory management, and visual merchandising by being responsible for operating our school store, the BTEC Snack Shack. As part of the curriculum, students will learn safe food handling and earn a Cooper County Food Handlers Supervisor License.

Prerequisite: Completion of Marketing with a C- or better, application and interview process will determine placement

Recommendation: Proficient computer and math skills and membership in DECA is required

Juniors and Seniors

½ unit; repeatable

Retail Marketing is offered every hour. Maximum of 2 students per hour

Marketing Internship

Students who have completed the Marketing course are eligible to participate in the marketing internship program for one to three class periods a day. Those who sign up for one class period must work an average of 10 hours per week and will earn ½ credit per semester. If enrolled in two class periods, the student must work an average of 20 hours per week and will earn 1 credit per semester. For those students who enroll in three class periods of internship, the student must work an average of 30 hours per week and will earn 1 ½ credits per semester. This internship must be taken in conjunction with another marketing program course which could include Advanced Marketing; Sports and Entertainment Marketing; Retail Marketing; Entrepreneurship; Hospitality, Travel and Tourism; and Fashion Marketing. Some internships may receive pay from an employer where others do not. Students must have reliable transportation, signed parent permission, approval from the intern's employer, as well as instructor approval. Job must be aligned in the marketing or retailing fields.

Prerequisite: To be eligible for the internship, students must have earned at least a **B average or better** in Marketing. The student must maintain employment throughout the semester. This internship must be taken in conjunction with another marketing course every semester taken

Recommendation: Proficient in computer skills and membership in DECA is required

Seniors

½ - 3 units; repeatable

Students who complete two or more credit hours in Internship, along with a Marketing class, will take Workplace Readiness Technical Skills Attainment (TSA) exam

Entrepreneurship

Want to own your own business someday? Learn how to be your own boss in this class. Students will learn how to identify their potential for creating and operating a business or marketable product/idea. Through the process of research, financial analysis and product development, students will create and pitch individual business plans. Students will also complete an online simulation to further their knowledge in business operations.

Prerequisite: Marketing with a C- or better

Recommendation: Proficient computer skills and membership in DECA is required, Intro to Business, Graphic Arts, Multimedia

Juniors and Seniors

½ unit

Hospitality, Travel, and Tourism

Like to travel? Want to learn how the hospitality industry works by catering and accommodating industries? This tourism course will enable students to learn how to work in hotels, restaurants, travel companies, tour operator, tour guide, or travel agent. Students will have the opportunity to learn historical values involved in tourism right here in Cooper County. Other travel opportunities may be available through DECA. Cultural experiences are an important component of this marketing class.

Prerequisite: Grade of C- or better in Marketing

Recommendation: Proficient computer skills and math skills and membership in DECA is required, Multimedia, Graphic Arts

Juniors and Seniors

½ unit

WOODWORKING I, ADVANCED WOODWORKING AND CONSTRUCTION

This program area offers exploration in basic construction and carpentry skills, pursuit of more advanced techniques with higher level woodworking classes, and both exploration and continuation of drafting and design using AutoCAD software. If a student wishes to take home their finished woodworking projects, the materials fee is \$40.00. Students can participate in SkillsUSA, a career and technical student organization, focused on preparing students for careers in trade, technical, and skilled service occupations.

Woodworking I (Introduction to Woodworking Technology)

In this course, students will learn introductory woodworking and basic construction skills through safety instruction, classroom study, hands-on use of tools and equipment, and building projects. Small, simple, inexpensive projects will be used as a springboard for advanced building projects in Advanced Woodworking and Construction Technology. A review of all aspects of the construction industry, such as career opportunities, house plans, technology, work ethics, etc. will be explored.

Recommendation: You should have good math skills and a willingness to work hard with your hands.

Maximum Capacity: 15 students per class

Open to all grade levels

1 unit (non-repeatable)

Advanced Woodworking/Construction Technology

In this course, students will learn more advanced aspects of the woodworking and building industry through hands-on building and construction experience. Although the primary focus of this class is actual construction of projects, all aspects of the woodworking and construction industry will be explored. Some career opportunities include construction, construction management, general carpentry, cabinet-making, interior design, architecture, and manufacturing. Emphasis is placed on safety in all phases of the coursework.

Prerequisites: Introduction to Woodworking, Communication Arts I, Algebra I, and Geometry

Maximum Capacity: 15 students per class

Sophomores, juniors, and seniors

1 or 2 units available (repeatable at instructor's discretion)

Upon successful completion of the course, participants will receive an OSHA 10-Hour safety card

ENGINEERING

From launching space explorations to delivering safe, clean water to communities, engineers find solutions to pressing problems and turn their ideas into reality. Engineering empowers students to step into the role of an engineer, adopt a problem-solving mindset, and make the leap from dreamers to doers. These courses engage students in compelling, real-world challenges that help them develop in-demand knowledge and skills they will use in high school and for the rest of their lives, on any career path they take. These activities not only build knowledge and skills in engineering, but also empower students to develop essential skills such as problem solving, critical and creative thinking, communication, collaboration, and perseverance.

Students can participate in SkillsUSA, a career and technical student organization, focused on preparing students for careers in trade, technical, and skilled service occupations.

PLTW – Engineering Essentials

The major focus of this course is to expose students to the work of all types of engineers and their role in the design and development of solutions to real world problems. The course assumes no previous knowledge in engineering concepts. The course introduces students to engineering concepts that are applicable across multiple engineering disciplines and empowers them to build technical skills using a variety of engineering tools, such as geographic information systems (GIS), 3-D solid modeling software, and prototyping equipment. Students learn and apply the engineering design process to develop mechanical, electronic, process, and logistical solutions to relevant problems across a variety of industry sectors, including health care, public service, and product development and Manufacturing.

Prerequisites: Concurrent enrollment in (or completion of) appropriate grade level math and science courses.

Maximum Capacity: 15 students per class

Open to all grade levels

1 unit (non-repeatable)

PLTW – Digital Electronics

Digital Electronics is the study of electronic circuits that are used to process and control digital signals. The digital realm is built on two basic words, ON and OFF. This ON/OFF switching is the same logic used to build the digital electronic circuits inside your laptop computer, drone and smartphone. In this class you will explore how the simple concept of ON/OFF creates a world of endless digital capabilities for you to learn and build. Students will design physical circuits and microcontrollers in which they will have the ability to run traffic signs, automate toll-booths and even count votes for an election. The labs demonstrate the real-world implementation of otherwise abstract academic concepts and provide valuable experience in breadboarding, testing and debugging circuits. **Dual credit opportunity listed below.**

Prerequisites: PLTW courses require concurrent enrollment in (or satisfactory completion of) appropriate grade level math and science courses

Maximum Capacity: 15 students per class

Sophomores, juniors, and seniors

1 unit

College dual credit is available from Missouri S&T upon completion of two PLTW-Engineering courses and with specific requirements.

PLTW – Robotics and Computer Integrated Manufacturing

Robotics and CIM is the study of robotics, programming and automation. The robotic automation revolution is growing and now is featured in almost every aspect of our lives. Robotics build the transitional phase where the physical reality fuses with the virtual world or programming. The course is an introduction to seemingly endless career possibilities of robotics and automation through real-world projects and problems. Students will work with control systems, sensors, processors and create custom-built machines to accomplish detailed tasks and the beginning levels of artificial intelligence. **Dual credit opportunity listed below.**

Prerequisites: PLTW courses require concurrent enrollment in (or satisfactory completion of) appropriate grade level math and science courses

Maximum Capacity: 15 students per class

Sophomores, juniors, and seniors

1 unit

College dual credit is available from Missouri S&T upon completion of two PLTW-Engineering courses and with specific requirements.

PLTW – Engineering Design and Development (Available 2021-2022)

The knowledge and skills students acquire throughout our Engineering courses come together in this capstone class - Engineering Design and Development - as they identify an issue and then research, design, and test a solution, ultimately presenting their solution to a panel of engineers. Students apply the professional skills they have developed to document a design process to industry standards, while students work in teams to design and develop an original solution to a valid open-ended technical problem by applying the engineering design process. The teams will create a working prototype of their solution, to deem the problem as “solved.”

Prerequisites: Must successfully pass two of the prior engineering courses with a C or better.

Maximum Capacity: 12 students per class

Seniors

1 unit (non-repeatable)

State Fair Community College Course: EDT 115 Advanced Engineering Design (3 credits) PENDING

College dual credit is available from Missouri S&T upon completion of two PLTW-Engineering courses and with specific requirements.

APPLIED ACADEMICS

Technical Math

In this course you will learn about how mathematics affects the world around you and explore a variety of applications that demonstrate the real-life nature of mathematics and its importance to your everyday life. This course is intended for students who require a broad-based general overview of mathematics that will prepare them for post-secondary study in a variety of areas, including computer science, business, medical sciences, social sciences, and building trades. The course will be more project-based than other math courses, and students will work on solving a variety of real-world problems as they master basic skills in number sense, algebra, geometry, probability, and statistics.

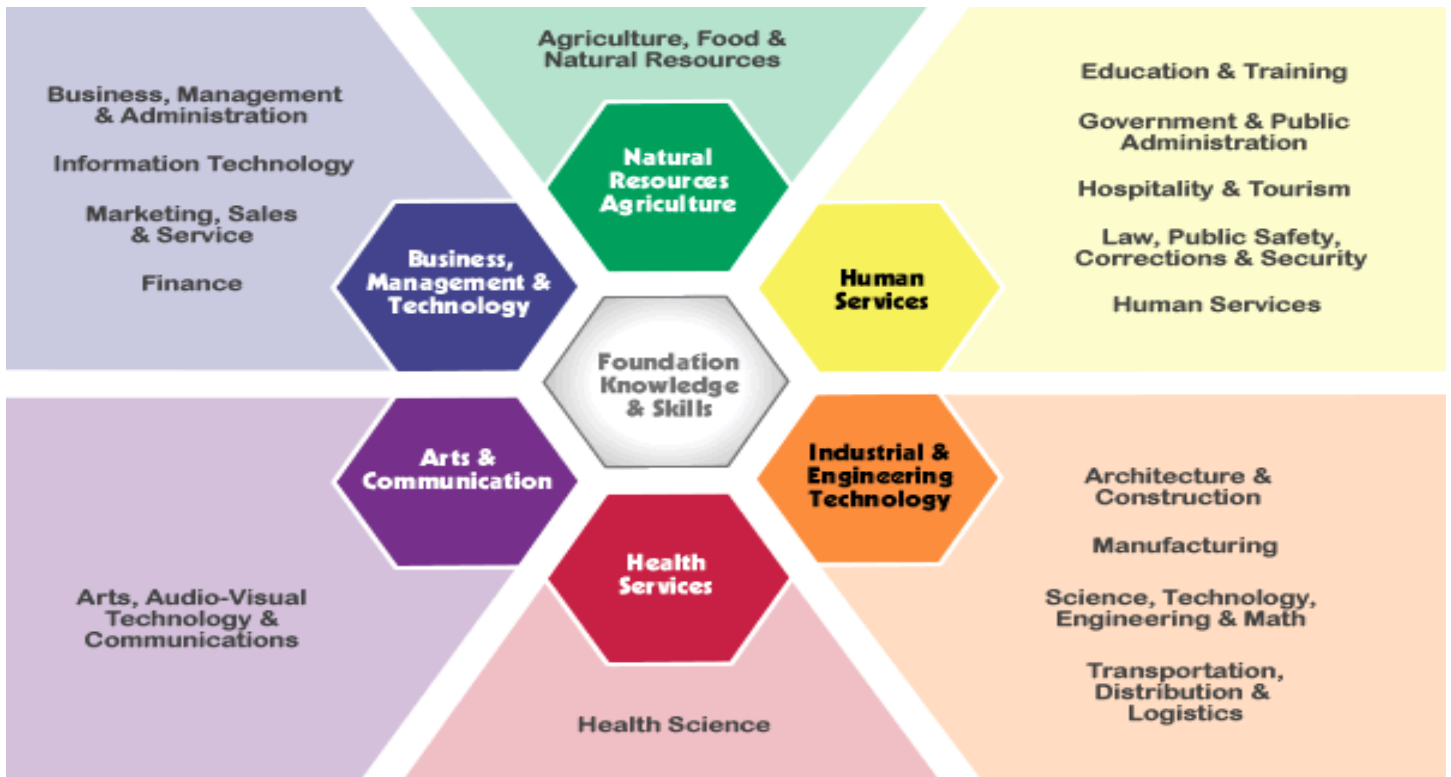
This course will count as an Applied Math Credit for high school graduation requirements.

Prerequisites: Algebra I and Geometry

Maximum Capacity: 15 students per class

Juniors, Seniors

1 unit (non-repeatable)





Boonville High School
Agriculture, Food & Natural Resources
 Career Cluster Program of Study Template
www.boonville.k12.mo.us

Minimum Graduation Requirements		SUGGESTED COURSE OF HIGH SCHOOL STUDY It is suggested that students consider dual credit, articulation, or advanced placement opportunities for postsecondary credit.						
	Grade	English	Math	Science	Social Studies	Required Courses, Elective Options	Boonslick Technical Education Center	Additional Learning Opportunities
Secondary	9	ELA I	Algebra I	Physical Science	American History	PE Health Career & Leadership Connections	Agricultural Science I ♦	School-Based: <input type="checkbox"/> Career Research <input type="checkbox"/> Cooperative Education <input type="checkbox"/> Internship <input type="checkbox"/> Job Shadowing <input type="checkbox"/> Service Learning Project <input type="checkbox"/> Other: _____ Community Based: <input type="checkbox"/> Mentorship <input type="checkbox"/> Volunteer <input type="checkbox"/> Part-time Employment <input type="checkbox"/> Other: _____ Assessments/Certifications: <input type="checkbox"/> Technical Skills Attainment (TSA) <input type="checkbox"/> Other: _____ Placement Assessments: <input type="checkbox"/> Accuplacer <input type="checkbox"/> ACT <input type="checkbox"/> PSAT <input type="checkbox"/> SAT <input type="checkbox"/> ASVAB <input type="checkbox"/> Other: _____ Student Organizations: <input type="checkbox"/> FBLA <input type="checkbox"/> FFA <input type="checkbox"/> FCCLA <input type="checkbox"/> SkillsUSA <input type="checkbox"/> DECA <input type="checkbox"/> HOSA <input type="checkbox"/> JROTC
	10	ELA II	Geometry	Biology	World Geography or World History	Personal Finance Graphic Arts Career & Leadership Connections	Agricultural Science I & II ♦ Marketing ♦	
	11	ELA III	Algebra II	Botany, Zoology, Earth Science, Chemistry	Government or Honors Government*	Computer Apps Accounting I Career & Leadership Connections	Ag Leadership & Communications ♦ Ag Management & Economics ♦* (odd) Ag Power I ♦ (odd) Agricultural Construction ♦ Animal Science ♦* (even) Conservation of Natural Resources ♦ (even) Floriculture ♦ (odd) Greenhouse Operation and Mngmt ♦* Landscaping/Turf Grass Management ♦* (even) Ag Structures ♦ (odd)	
	12	ELA IV or College Prep English*	Pre-Calc Alg* Pre-Calc Trig* Quant Reason Statistics* Calculus*	Anatomy, AP Chemistry, Physics Botany Chemistry II	Psychology* Sociology Criminal Justice Current Events US Hist Before 1877* US Hist After 1877*	Speech* Career & Leadership Connections	Ag Leadership & Communications ♦ Ag Management & Economics ♦*(odd) Ag Power I ♦ (odd) Agricultural Construction ♦ Animal Science ♦* (even) Conservation of Natural Resources ♦ (even) Floriculture ♦ (odd) Greenhouse Operation and Mngmt ♦* Landscaping/Turf Grass Management ♦* (even) Ag Structures ♦ (odd)	

Postsecondary Offerings – For A Complete Listing, go to www.missouriconnections.org					
Postsecondary	Community College	Technical School/Training Institution	In State		Out of State/Other
	Crowder College www.crowder.edu East Central College www.eastcentral.edu Jefferson College www.jeffco.edu Linn State Technical College www.linnstate.edu Metropolitan Community College www.mcckc.edu Mineral Area College www.mineralarea.edu North Central Missouri College www.ncmissouri.edu Ozarks Technical Community College www.otc.edu St Louis Community College www.stlcc.edu State Fair Community College www.sfccmo.edu Three Rivers Community College www.trcc.edu	Columbia Area Career Center www.career-center.org Davis Hart Career Center www.mexicoschools.net Eldon Career Center www.eldoncareercenter.org Hannibal Career and Technical Center www.hannibal.tec.mo.us Kirksville Area Tech Center www.kirksville.k12.mo.us Moberly Area Tech Center www.moberly.k12.mo.us Ranken Tech College www.ranken.edu Waynesville Technical Academy www.waynesville.k12.mo.us	A.T. Skill University of Health Sciences www.atsu.edu Avila University - www.avila.edu Central Methodist University www.centralmethodist.edu College of the Ozarks - www.coto.edu Columbia College - www.ccis.edu Culver-Stockton College www.culver.edu Drury University - www.drury.edu Evangel University - www.evangel.edu Fontbonne Univ - www.fontbonne.edu Hannibal-Lagrange College - www.hlg.edu Lincoln University - www.lincolnu.edu Lindenwood University www.lindenwood.edu Maryville University of St. Louis www.maryville.edu Missouri Baptist Univ - www.mobap.edu MO Southern State University www.mssu.edu Missouri State University www.missouristate.edu Missouri State University – West Plains www.wp.missouristate.edu MO Univ of Science & Technology www.mst.edu Missouri Valley College www.moval.edu	Missouri Western State University www.missouriwestern.edu Northwest Missouri State University www.nwmissouri.edu Park University - www.park.edu Rockhurst University - www.rockhurst.edu Saint Louis University www.imagine.stu.edu Southeast MO State University www.semo.edu Southwest Baptist University www.sbuuniv.edu Stephens College - www.stephens.edu Truman State Univ - www.truman.edu Univ of Central MO - www.ucmo.edu University of MO – Columbia www.missouri.edu University of MO – Kansas City www.umkc.edu Univ of MO – St Louis - www.umsl.edu Washington University - www.wustl.edu Webster University www.websteruniv.edu Westminster College www.westminster-mo.edu William Jewell College - www.jewell.edu William Woods University www.williamwoods.edu	<ul style="list-style-type: none"> • Apprenticeship • Military • On-the-Job Training Petropolis Academy of Grooming & Training - www.petropolisacademy.com Midwest Institute www.midwestinstitute.com
Sample Careers By Educational Level – For Occupational Specialties, go to www.careerclusters.org or www.missouriconnections.org					
On-The-Job Training or Less	Technical Training or Associate Degree	Bachelors Degree	Masters Degree or More		
Animal Caretakers Animal Trainers Bakers Commercial Fishers Farm and Ranch Workers Farm Equipment Mechanics Farmers Food Processing Workers Log Graders and Scalers Loggers Meat Cutters Mining Machine Operators Nursery Workers Rock Splitters Trash Collectors Veterinary Assistants Water Treatment Plant Operators	Fish and Game Wardens Forestry Technicians Precision Agriculture Technicians	Agricultural Engineers Agricultural Scientists Animal Scientists Conservation Scientists Farm and Home Management Advisors Food Scientists Foresters Park Naturalists Zoologists	Agricultural Sciences Teachers, Postsecondary Animal Scientists Farm and Home Management Advisors Veterinarians Zoologists and Wildlife Biologists		



Boonville High School
Architecture & Construction
 Career Cluster Program of Study Template
www.boonville.k12.mo.us

Minimum Graduation Requirements		SUGGESTED COURSE OF HIGH SCHOOL STUDY It is suggested that students consider dual credit, articulation, or advanced placement opportunities for postsecondary credit.						
Grade	English	Math	Science	Social Studies	Required Courses, Elective Options	Boonslick Technical Education Center	Additional Learning Opportunities	
Secondary	9	ELA I	Algebra I	Physical Science	American History	PE Health Career & Leadership Connections	Agriculture Science I ♦ Woodworking I PLTW Engineering Essentials*	School-Based: <input type="checkbox"/> Career Research <input type="checkbox"/> Cooperative Education <input type="checkbox"/> Internship <input type="checkbox"/> Job Shadowing <input type="checkbox"/> Service Learning Project <input type="checkbox"/> Other: _____
	10	ELA II	Geometry	Biology	World Geography Or World History	Personal Finance Graphic Arts Multimedia Career & Leadership Connections	Agriculture Science II ♦ Woodworking I Advanced Woodworking PLTW Digital Electronics* PLTW Engineering Essentials*	Community Based: <input type="checkbox"/> Mentorship <input type="checkbox"/> Volunteer <input type="checkbox"/> Part-time Employment <input type="checkbox"/> Other: _____ Assessments/Certifications: <input type="checkbox"/> Technical Skills Attainment (TSA) <input type="checkbox"/> Other: _____
	11	ELA III	Algebra II	Botany, Zoology, Earth Science, Chemistry	Government or Honors Government*	Housing and Interiors Business Law Intro to Business Career & Leadership Connections	Ag Power ♦ (odd) Ag Structures ♦ (odd) Woodworking I Advanced Woodworking PLTW Digital Electronics* PLTW Robotics and CIM* PLTW Engineering Essentials*	Placement Assessments: <input type="checkbox"/> Accuplacer <input type="checkbox"/> ACT <input type="checkbox"/> PSAT <input type="checkbox"/> SAT <input type="checkbox"/> ASVAB <input type="checkbox"/> Other: _____
	12	ELA IV Or College Prep English*	Pre-Calc Alg* Pre-Calc Trig* Quant Reason Statistics* Calculus*	Anatomy Chemistry II Physics	Psychology* Sociology Criminal Justice Current Events US Hist Before 1877* US Hist After 1877*	Accounting Speech* Business Mgmt. Career & Leadership Connections	Ag Construction ♦ Landscaping/Turf grass Management ♦* (even) Woodworking Ag Leadership ♦* Ag SAE ♦ Ag Structures (odd) PLTW Robotics and CIM* PLTW Engineering Essentials*	Student Organizations: <input type="checkbox"/> FBLA <input type="checkbox"/> FFA <input type="checkbox"/> FCCLA <input type="checkbox"/> SkillsUSA <input type="checkbox"/> DECA <input type="checkbox"/> HOSA <input type="checkbox"/> JROTC

Postsecondary Offerings – For A Complete Listing, go to www.missouriconnections.org					
Postsecondary	Community College	Technical School/Training Institution	In State		Out of State/Other
		Crowder College www.crowder.edu East Central College www.eastcentral.edu Jefferson College www.jeffco.edu Linn State Technical College www.linnstate.edu Metropolitan Community College www.mcckc.edu Mineral Area College www.mineralarea.edu Moberly Area Comm. College www.macc.edu North Central Missouri College www.ncmissouri.edu Ozarks Technical Comm. College www.otc.edu St Louis Community College www.stlcc.edu St. Charles Community College www.stchas.edu State Fair Community College www.sfccmo.edu Three Rivers Community College www.trcc.edu	Arcadia Valley Tech Center - www.mineralarea.edu Cape Girardeau Career/Tech Center www.cape.k12.mo.us/cc/default.htm Clinton Tech School www.clinton.k12.mo.us Columbia Area Career Car - www.career-center.org Davis Hart Career Car- www.mexicoschools.net Eldon Career Car - www.eldoncareercenter.org Franklin Technology- MSSU www.ftcjoplin.com Gibson Tech Car - www.wolves.k12.mo.us/gtc Grand River Technical School - www.grts.org Hannibal Career and Technical Center www.hannibal.tec.mo.us Herndon Career Center www.herndoncareercenter.com Hillyard Technical Car - www.hillyardtech.com Lake Career & Technical Center www.camdentonschools.org Lebanon Technology and Career Car www.lebanon.k12.mo.us Lex La-Ray Tech Car www.lexington.k12.mo.us Kirksville Area Tech Car www.kirksville.k12.mo.us Moberly Area Tech Car - www.moberly.k12.mo.us Nichols Career Center - www.jcps.k12.mo.us Northland Career Car - www.northlandcareercenter.com Northwest Tech School - www.maryville.k12.mo.us Perryville Area Career/Tech Center www.perryville.k12.mo.us Pike-Lincoln Tech Car - www.pltc.k12.mo.us Ranken Tech College - www.ranken.edu Rolla Tech Institute - www.rolla.k12.mo.us South Central Career Car - www.wphs.k12.mo.us Unitec Career Center - www.mineralarea.edu Waynesville Technical Academy www.waynesville.k12.mo.us	Avila University - www.avila.edu Baptist Bible College - www.baptist.edu Bryan College - www.bryancollege.com Central Methodist University www.centralmethodist.edu College of the Ozarks - www.coto.edu Columbia College - www.ccis.edu Culver-Stockton College - www.culver.edu Drury University - www.drury.edu Evangel University - www.evangel.edu Everest College www.everest-college.edu Fontbonne Univ - www.fontbonne.edu Hannibal-Lagrange College - www.hlq.edu Harris-Stowe State Univ - www.hssu.edu Lincoln University - www.lincolnu.edu Lindenwood Univ - www.lindenwood.edu Maryville Univ of St. Louis www.maryville.edu Messenger College www.messengercollege.edu Missouri Baptist Univ - www.mobap.edu Missouri College www.missouricollege.com Missouri Southern State University www.mssu.edu Missouri State University www.missouristate.edu Missouri State University – West Plains www.wp.missouristate.edu	MO University of Science & Technology www.mst.edu Missouri Western State University www.missouriwestern.edu Park University - www.park.edu Rockhurst University www.rockhurst.edu Saint Louis University www.imagine.stu.edu Sanford-Brown College www.sanford-browncollege.com Southeast MO State University www.semo.edu Southwest Baptist Univ - www.sbuuniv.edu Stephens College - www.stephens.edu Truman State Univ - www.truman.edu Univ of Central MO - www.ucmo.edu Univ of MO – Columbia - www.missouri.edu Univ of MO – Kansas City www.umkc.edu Univ of MO – St Louis - www.umsi.edu University of Phoenix - www.phoenix.edu Vatterott College www.vatterott-college.edu Washington University - www.wustl.edu Webster University - www.websteruniv.edu Westminster College www.westminster-mo.edu William Jewell College - www.jewell.edu William Woods University www.williamwoods.edu
Sample Careers By Educational Level – For Occupational Specialties, go to www.careerclusters.org or www.missouriconnections.org					
On-The-Job Training or Less	Technical Training or Associate Degree	Bachelors Degree	Masters Degree or More		
Bricklayers, Stonemasons and Cement Masons Cabinetmakers and Carpenters Drywall Finishers & installers and Plasterers Electricians Fence Builders Heating and Cooling System Mechanics Highway Maintenance Workers & Paving Equip Operators Line Installers and Repairers Plumbers and Pipefitters Roofers Sheet Metal Workers and Structural Metal Workers Surveying and Mapping Technicians Tile Setters	Commercial Divers Drafters Energy Auditors Interior Designers	Architects Construction Managers Cost Estimators Landscape Architects Surveyors	Architects, Except Landscape and Naval Architecture Teachers, Postsecondary Engineering Managers Engineering Teachers, Postsecondary Historians Operations Research Analysts Political Scientists Sociologists Sociology Teachers, Postsecondary		



Boonville High School
Arts, A/V Technology & Communications
 Career Cluster Program of Study Template
www.boonville.k12.mo.us

Minimum Graduation Requirements		SUGGESTED COURSE OF HIGH SCHOOL STUDY It is suggested that students consider dual credit, articulation, or advanced placement opportunities for postsecondary credit.						
	Grade	English	Math	Science	Social Studies	Required Courses, Elective Options	<u>Boonslick Technical Education Center</u>	Additional Learning Opportunities
Secondary	9	ELA I	Algebra I	Physical Science	American History	PE Health Web Design Spanish Drama Career & Leadership Connections Thematic Lit	Marketing♦ PLTW – Comp Science Prin* Computer Game Design IT Fundamentals	School-Based: <input type="checkbox"/> Career Research <input type="checkbox"/> Cooperative Education <input type="checkbox"/> Internship <input type="checkbox"/> Job Shadowing <input type="checkbox"/> Service Learning Project <input type="checkbox"/> Other:
	10	ELA II	Geometry	Biology	World Geography Or World History	Personal Finance Graphic Arts Music of 20 th Century Newspaper Yearbook Publications Intro to Comp Program Band Art Choir Spanish	Advanced Marketing♦ Computer Game Design	Community Based: <input type="checkbox"/> Mentorship <input type="checkbox"/> Volunteer <input type="checkbox"/> Part-time Employment <input type="checkbox"/> Other: Assessments/Certifications: <input type="checkbox"/> Technical Skills Attainment (TSA) <input type="checkbox"/> Other:
	11	ELA III	Algebra II	Botany, Zoology, Earth Science, Chemistry	Government or Honors Government*	Band Art Choir Web Design Intro Film Creative Writing Speech* Spanish Multimedia Appl Instrumental Tech * Thematic Lit Humanities	PLTW Digital Electronics* Fashion Marketing Retail Marketing Marketing Internship Hospitality, Travel, & Tour Medical Terminology *	Placement Assessments: <input type="checkbox"/> Accuplacer <input type="checkbox"/> ACT <input type="checkbox"/> PSAT <input type="checkbox"/> SAT <input type="checkbox"/> ASVAB <input type="checkbox"/> Other:
	12	ELA IV Or College Prep English*	Pre-Calc Alg* Pre-Calc Trig* Quant Reason Statistics* Calculus*	Anatomy Chemistry II Physics	Psychology* Sociology Criminal Justice Current Events US Hist Before 1877* US Hist After 1877*	Art Portfolio Humanities Creative Writing Spanish Appl Instrumental Tech* Adv Graphic Arts	Computer Game Design Fashion Marketing Retail Marketing Marketing Internship Hospitality, Travel & Tourism Medical Terminology *	Student Organizations: <input type="checkbox"/> FBLA <input type="checkbox"/> FFA <input type="checkbox"/> FCCLA <input type="checkbox"/> SkillsUSA <input type="checkbox"/> DECA <input type="checkbox"/> HOSA <input type="checkbox"/> JROTC

Postsecondary Offerings - For A Complete Listing, go to www.missouriconnections.org

Postsecondary	Community College	Technical School/Training Institution	In State		Out of State/Other
	<p>Crowder College www.crowder.edu</p> <p>East Central College www.eastcentral.edu</p> <p>Jefferson College www.jeffco.edu</p> <p>Linn State Technical College www.linnstate.edu</p> <p>Metropolitan Comm. College www.mcckc.edu</p> <p>Mineral Area College www.mineralarea.edu</p> <p>Moberly Area Comm. College www.macc.edu</p> <p>Ozarks Tech Comm. College www.otc.edu</p> <p>St. Charles Comm. College www.stchas.edu</p> <p>St Louis Community College www.stlcc.edu</p> <p>State Fair Community College www.sfccmo.edu</p> <p>Three Rivers Comm. College www.trcc.edu</p>	<p>Cape Girardeau Career/Tech Center www.cape.k12.mo.us/cc/default.htm</p> <p>Clinton Technical School www.clinton.k12.mo.us/ts.php</p> <p>Davis Hart Mexico Technical School www.mexicoschools.org</p> <p>Eldon Career Center www.eldoncareercenter.org</p> <p>Four Rivers Technical Center www.washington.k12.mo.us</p> <p>Franklin Tech - MSSU www.ftcjoplin.com</p> <p>Gibson Tech Car - www.wolves.k12.mo.us/gtc</p> <p>Hannibal Career and Technical Center www.hannibal.tec.mo.us</p> <p>Herndon Career Center www.herndoncareercenter.com</p> <p>Hillyard Tech Center - www.hillyardtech.com</p> <p>Kirksville Area Technical Center www.kirksville.k12.mo.us</p> <p>Lake Career and Technical Center www.camdentonschools.org</p> <p>Lex La-Ray Tech Car - www.lexington.k12.mo.us</p> <p>Moberly Area Tech Car - www.moberly.k12.mo.us</p> <p>Nichols Career Center - www.jcps.k12.mo.us</p> <p>Perryville Area Career/Technical Center www.mineralarea.edu</p> <p>Ranken Technical College - www.ranken.edu</p> <p>Rolla Technical Institute - www.rolla.k12.mo.us</p> <p>Waynesville Technical Academy www.waynesville.k12.mo.us</p>	<p>Avila University - www.avila.edu</p> <p>Bryan College - www.bryancollege.com</p> <p>Central Methodist University www.centralmethodist.edu</p> <p>College of the Ozarks - www.coto.edu</p> <p>Columbia College - www.ccis.edu</p> <p>Culver-Stockton College - www.culver.edu</p> <p>DeVry University - www.devry.edu</p> <p>Drury University - www.drury.edu</p> <p>Evangel University - www.evangel.edu</p> <p>Everest College www.everest-college.com</p> <p>Fontbonne Univ - www.fontbonne.edu</p> <p>Hannibal-Lagrange College - www.hlg.edu</p> <p>Harris-Stowe State Univ - www.hssu.edu</p> <p>Hickey College www.hickeycollege.edu</p> <p>Lincoln University - www.lincolnu.edu</p> <p>Lindenwood Univ - www.lindenwood.edu</p> <p>Maryville Univ of St. Louis www.maryville.edu</p> <p>Messenger College www.messengercollege.edu</p> <p>Missouri Baptist Univ - www.mobap.edu</p> <p>Missouri College www.missouricollege.com</p> <p>MO Southern State Univ - www.mssu.edu</p> <p>Missouri State University www.missouristate.edu</p>	<p>Missouri State University – West Plains www.wp.missouristate.edu</p> <p>Missouri Valley College - www.moval.edu</p> <p>Missouri Western State University www.missouriwestern.edu</p> <p>Northwest Missouri State University www.nwmissouri.edu</p> <p>Ozark Christian College - www.occ.edu</p> <p>Park University - www.park.edu</p> <p>Patricia Stevens College www.patriciastevenscollege.edu</p> <p>Rockhurst University - www.rockhurst.edu</p> <p>Saint Louis Univ - www.imagine.stu.edu</p> <p>Sanford-Brown College www.sanford-browncollege.com</p> <p>Southeast MO State Univ - www.semo.edu</p> <p>Southwest Baptist Univ - www.sbuniv.edu</p> <p>Stephens College - www.stephens.edu</p> <p>Truman State Univ - www.truman.edu</p> <p>Univ of Central MO - www.ucmo.edu</p> <p>Univ of MO – Columbia - www.missouri.edu</p> <p>Univ of MO – Kansas City - www.umkc.edu</p> <p>Univ of MO – Rolla - www.umar.edu</p> <p>Univ of MO – St Louis - www.umsl.edu</p> <p>Vatterott Coll - www.vatterott-college.edu</p> <p>Washington University - www.wustl.edu</p> <p>Webster University - www.websteruniv.edu</p> <p>William Jewell College - www.jewell.edu</p> <p>William Woods University www.williamwoods.edu</p>	<ul style="list-style-type: none"> Apprenticeship Military On-the-Job Training <p>American College of Technology www.acot.edu</p> <p>Baptist Bible College - www.baptist.edu</p> <p>Barbizon School of Clayton www.barbizonmodeling.com</p> <p>Broadcast Center www.broadcastcenterinfo.com</p> <p>Calvary Bible College and Theological Seminary - www.calvary.edu</p> <p>Central Bible College - www.cbcaq.edu</p> <p>Colorado Technical University www.coloradotech.com</p> <p>Court Report Academy www.thecourtreportingacademy.com</p> <p>ITT Technical Institute www.itt-tech.edu</p> <p>Kansas City Art Inst - www.kcai.edu</p> <p>Midwestern Baptists Theological Seminary - www.mbts.edu</p> <p>Missouri Tech – www.motech.edu</p> <p>National American University www.national.edu</p>

Sample Careers By Educational Level - For Occupational Specialties, go to www.careerclusters.org or www.missouriconnections.org

On-The-Job Training or Less	Technical Training or Associate Degree	Bachelors Degree	Masters Degree or More
<p>Actors</p> <p>Bookbinders and Bindery Workers</p> <p>Camera/Photographic Equipment Repairers</p> <p>Communications Equipment Mechanics</p> <p>Costume and Wardrobe Specialists</p> <p>Dancers</p> <p>Fine Artists</p> <p>Floral Designers</p> <p>Movie Projectionists</p> <p>Musical Instrument Repairers and Tuners</p> <p>Musicians and Singers</p> <p>Painting, Coating, and Decorating Workers</p> <p>Photographers</p> <p>Potters</p> <p>Printing Press Operators</p> <p>Proofreaders</p> <p>Ushers and Ticket Takers</p>	<p>Audio and Video Equipment Technicians</p> <p>Broadcast Technicians and Sound Engineering Techs</p> <p>Camera Operators, Film and Video Editors</p> <p>Choreographers</p> <p>Communications Equipment Mechanics</p> <p>Computer, Automated Teller, & Office Machine Repairers</p> <p>Desktop Publishers and Page Layout Workers</p> <p>Directors- Stage, Motion Pictures, Television, and Radio</p> <p>Electronic Home Entertainment Equipment Installers/Repairers</p> <p>Fashion Designers and Interior Designers</p> <p>Fine Artists, Including Painters, Sculptors, and Illustrators</p> <p>Multi-Media Artists and Animators</p> <p>Music Directors</p> <p>Poets, Lyricists and Creative Writers</p> <p>Producers</p> <p>Radio Mechanics and Operators</p> <p>Telecommunications Equipment Installers and Repairers</p>	<p>Agents and Business Managers</p> <p>Animators and Multi-media Artists</p> <p>Art Directors and Talent Directors</p> <p>Broadcast News Analysts and News Reporters</p> <p>Copy Writers, Technical Writers and Editors</p> <p>Directors- Stage, Motion Pictures, Television, and Radio</p> <p>Film and Video Editors</p> <p>Graphic Designers</p> <p>Industrial Designers</p> <p>Interpreters and Translators</p> <p>Multi-Media Artists and Animators</p> <p>Museum Technicians and Conservators</p> <p>Music Composers, Directors, and Arrangers</p> <p>Poets, Lyricists and Creative Writers</p> <p>Proofreaders and Copy Markers</p> <p>Reporters and Correspondents</p> <p>Set and Exhibit Designers</p> <p>Vocational Education Teachers, Postsecondary</p>	<p>Art, Drama, and Music Teachers, Postsecondary</p> <p>Communications Teachers, Postsecondary</p> <p>English Language and Literature Teachers, Postsecondary</p> <p>Historians</p> <p>Librarians</p>



Boonville High School
Business Management & Administration
 Career Cluster Program of Study Template
www.boonville.k12.mo.us

Minimum Graduation Requirements	SUGGESTED COURSE OF HIGH SCHOOL STUDY It is suggested that students consider dual credit, articulation, or advanced placement opportunities for postsecondary credit.
---------------------------------	---

	Grade	English	Math	Science	Social Studies	Required Courses, Elective Options	Boonslick Technical Education Center	Additional Learning Opportunities
Secondary	9	ELA I	Algebra I	Physical Science	American History	PE Health Spanish Intro to Business	Marketing ♦ PLTW-Computer Science Principles* IT Fundamentals Ag Science I ♦	School-Based: <input type="checkbox"/> Career Research <input type="checkbox"/> Internship <input type="checkbox"/> Job Shadowing <input type="checkbox"/> Other: _____ Community Based: <input type="checkbox"/> Mentorship <input type="checkbox"/> Volunteer <input type="checkbox"/> Part-time Employment <input type="checkbox"/> Other: _____ Assessments/Certifications: <input type="checkbox"/> Technical Skills Attainment (TSA) <input type="checkbox"/> Other: _____ _____
	10	ELA II	Geometry	Biology	World Geography or World History	Personal Finance Career & Leadership Connections Intro to Business Business Sports Management Bus & Political Econ	Adv Marketing ♦ PLTW Cybersecurity* Ag Science II ♦	Assessments/Certifications: <input type="checkbox"/> Technical Skills Attainment (TSA) <input type="checkbox"/> Other: _____ _____
	11	ELA III	Algebra II	Botany, Chemistry, Earth Science, Zoology	Government or Honors Government*	Accounting I Spanish Business Sports Management Career & Leadership Connections Bus & Political Econ Intro to Business Computer Apps	Agricultural Mngmt & Economics (odd) ♦* Retail Marketing Fashion Marketing Hosp., Travel, & Tourism Ag Leadership & Communication *	Placement Assessments: 📌 Accuplacer 📌 ACT or SAT 📌 SAT 📌 ASVAB 📌 Other _____ Student Organizations:
	12	ELA IV or College Prep English*	Pre-Calc Alg* Pre-Calc Trig* Quant Reason Statistics* Calculus*	Anatomy Chemistry II Physics	Psychology* Sociology Criminal Justice Current Events US Hist Before 1877* US Hist After 1877*	Bus & Criminal Law Business SportsMgmt. Accounting II Spanish Career & Leadership Connections Intro to Business Business & Political Econ	Agricultural Mngmt & Economics (odd) ♦* Medical Terminology * Retail Marketing Fashion Marketing Hosp., Travel, & Tourism Marketing Internship	

Postsecondary Offerings – For A Complete Listing, go to www.missouriconnections.org

Postsecondary	Community College	Technical School/Training Institution	In State		Out of State/Other
	<p>Crowder College www.crowder.edu</p> <p>East Central College www.eastcentral.edu</p> <p>Jefferson College www.jeffco.edu</p> <p>Metropolitan Community College www.mcckc.edu</p> <p>Mineral Area College www.mineralarea.edu</p> <p>Moberly Area Community College www.macc.edu</p> <p>North Central Missouri College www.ncmissouri.edu</p> <p>Ozarks Technical Comm. College www.otc.edu</p> <p>St. Charles Community College www.stchas.edu</p> <p>St Louis Community College www.stlcc.edu</p> <p>State Fair Community College www.sfccmo.edu</p> <p>Three Rivers Community College www.trcc.edu</p>	<p>Cape Girardeau Career/Tech Center www.cape.k12.mo.us/cc/default.htm</p> <p>Clinton Tech School www.clinton.k12.mo.us</p> <p>Eldon Career Center - www.eldoncareercenter.org</p> <p>Franklin Technology- MSSU www.ftcjoplin.com</p> <p>Grand River Technical School www.grts.org</p> <p>Hillyard Technical Center www.hillyardtech.com</p> <p>Kirksville Area Tech Center www.kirksville.k12.mo.us</p> <p>Lex La-Ray Tech Center www.lexington.k12.mo.us</p> <p>Moberly Area Tech Center www.moberly.k12.mo.us</p> <p>Northwest Tech School - www.maryville.k12.mo.us</p> <p>Pike-Lincoln Tech Center www.pltc.k12.mo.us</p> <p>Ranken Tech College - www.ranken.edu</p> <p>Saline County Career Center www.marshallschools.com/sccc</p> <p>Sikeston Career and Technology Center www.sikeston.k12.mo.us</p>	<p>Avila University - www.avila.edu</p> <p>Baptist Bible College - www.baptist.edu</p> <p>Bryan College - www.bryancollege.com</p> <p>Central Methodist University www.centralmethodist.edu</p> <p>College of the Ozarks - www.coto.edu</p> <p>Columbia College - www.ccis.edu</p> <p>Culver-Stockton College - www.culver.edu</p> <p>DeVry University – www.devry.edu</p> <p>Drury University - www.drury.edu</p> <p>Evangel University - www.evangel.edu</p> <p>Everest College - www.everest-college.com</p> <p>Fontbonne Univ - www.fontbonne.edu</p> <p>Hannibal-Lagrange College - www.hlg.edu</p> <p>Harris-Stowe State Univ - www.hssu.edu</p> <p>Hickey College - www.hickeycollege.edu</p> <p>Lincoln University - www.lincolnu.edu</p> <p>Lindenwood Univ - www.lindenwood.edu</p> <p>Maryville Univ of St. Louis www.maryville.edu</p> <p>Messenger College www.messengercollege.edu</p> <p>Missouri Baptist Univ - www.mobap.edu</p> <p>Missouri College www.missouricollege.com</p> <p>MO Southern State Univ - www.mssu.edu</p> <p>Missouri State University www.missouristate.edu</p> <p>Missouri State University – West Plains www.wp.missouristate.edu</p>	<p>Missouri Western State University www.missouriwestern.edu</p> <p>Northwest Missouri State University www.nwmissouri.edu</p> <p>Park University - www.park.edu</p> <p>Patricia Stevens College www.patriciastevenscollege.edu</p> <p>Rockhurst University - www.rockhurst.edu</p> <p>Saint Louis University www.imagine.stu.edu</p> <p>Sanford-Brown College www.sanford-browncollege.com</p> <p>Southeast MO State Univ - www.semo.edu</p> <p>Southwest Baptist Univ - www.sbuiv.edu</p> <p>Stephens College - www.stephens.edu</p> <p>Truman State Univ - www.truman.edu</p> <p>Univ of Central MO - www.ucmo.edu</p> <p>Univ of MO – Columbia - www.missouri.edu</p> <p>Univ of MO – Kansas City www.umkc.edu</p> <p>Univ of MO – Rolla – www.umsu.edu</p> <p>Univ of MO – St Louis - www.umsl.edu</p> <p>Univ of Phoenix – www.phoenix.edu</p> <p>Vatterott College www.vatterott-college.edu</p> <p>Washington University - www.wustl.edu</p> <p>Webster University - www.websteruniv.edu</p> <p>Westminster College www.westminster-mo.edu</p> <p>William Jewell College - www.jewell.edu</p> <p>William Woods University www.williamwoods.edu</p>	<ul style="list-style-type: none"> • Apprenticeship • Military • On-the-Job Training <p>Colorado Technical University www.coloradotech.com</p> <p>Daruby School www.darubyschool.com</p> <p>Grantham University www.grantham.edu</p> <p>ITT Technical Institute www.itt-tech.edu</p> <p>Metro Business College www.metrobusinesscollege.edu</p> <p>MVC Computer & Business School www.mvcschool.com</p> <p>National American University www.national.edu</p> <p>TechSkills www.techskills.com</p> <p>Texas County Technical Institute www.texascountytech.edu</p>

Sample Careers By Educational Level – For Occupational Specialties, go to www.careerclusters.org or www.missouriconnections.org

On-the-Job Training	Technical Training or Associate Degree	Bachelors Degree	Masters Degree or More
<p>Billing Clerks</p> <p>Bookkeeping and Accounting Clerks</p> <p>Computer Operators</p> <p>Copy Machine Operators</p> <p>Couriers and Messengers</p> <p>Data Entry</p> <p>File Clerks</p> <p>General Office Clerks</p> <p>Human Resources Assistants</p> <p>Interviewing Clerks</p> <p>Mail Clerks</p> <p>Order Clerks and Stock Clerks</p> <p>Payroll and Timekeeping clerks</p> <p>Receptionists</p> <p>Secretaries</p> <p>Shipping and Receiving Clerks</p> <p>Typists</p>	<p>Court Reporters</p> <p>First-Line Supervisors/Managers</p> <p>General and Operations Managers</p> <p>Production and Operating Workers</p>	<p>Administrative Services Managers</p> <p>Advertising Managers</p> <p>Business Executives</p> <p>Computer and Information Systems Managers</p> <p>Employee Training Specialists</p> <p>Employment Interviewers and Recruiters</p> <p>Human Resources Managers</p> <p>Job Benefits and Analysis Specialists</p> <p>Management Analysts</p> <p>Market Research Analysts</p> <p>Meeting and Convention Planners</p> <p>Property and Real Estate Managers</p> <p>Public Relations Managers, Specialists</p> <p>Purchasing Manager and Sales Managers</p> <p>Regulatory Affairs Specialists</p> <p>Social and Community Services Managers</p> <p>Storage and Distribution Managers</p>	<p>Business Teacher, Postsecondary</p> <p>Chief Executives</p> <p>Controller, Treasurers</p> <p>Economists</p> <p>Medical and Health Services Managers</p> <p>Operations Research Analysts</p> <p>Statisticians</p>



Boonville High School
Education & Training
 Career Cluster Program of Study Template
www.boonville.k12.mo.us

Minimum Graduation Requirements		SUGGESTED COURSE OF HIGH SCHOOL STUDY It is suggested that students consider dual credit, articulation, or advanced placement opportunities for postsecondary credit.						
	Grade	English	Math	Science	Social Studies	Required Courses, Elective Options	Boonslick Technical Education Center	Additional Learning Opportunities
Secondary	9	ELA I	Algebra I	Physical Science	American History	PE Health Spanish I Career & Leadership Connection	IT Fundamentals JROTC (L.E.T.I) Ag 1 ♦	School-Based: <input type="checkbox"/> Career Research <input type="checkbox"/> Cooperative Education <input type="checkbox"/> Internship <input type="checkbox"/> Job Shadowing <input type="checkbox"/> Service Learning Project <input type="checkbox"/> Other: _____
	10	ELA II	Geometry	Biology	World Geography or World History	Personal Finance Graphic Arts Spanish Computer Appl Adv Computer Appl FCCLA Leadership Career & Leadership Connection	Ag II ♦ JROTC (L.E.T. II)	Community Based: <input type="checkbox"/> Mentorship <input type="checkbox"/> Volunteer <input type="checkbox"/> Part-time Employment <input type="checkbox"/> Other: _____ Assessments/Certifications: <input type="checkbox"/> Technical Skills Attainment (TSA) <input type="checkbox"/> Other: _____
	11	EL III	Algebra II	Botany, Zoology, Earth Science Chemistry	Government or Honors Government*	Child Development I&II Family Relations Speech* Spanish Teacher's Aide Hannah Cole Aide Multimedia Career & Leadership Connection Computer App*	Ag Leadership & Communications * JROTC (L.E.T. III)	Placement Assessments: <input type="checkbox"/> Accuplacer <input type="checkbox"/> ACT <input type="checkbox"/> PSAT <input type="checkbox"/> SAT <input type="checkbox"/> ASVAB <input type="checkbox"/> Other: _____
	12	ELA IV or College Prep English*	Pre-Calc Alg* Pre-Calc Trig* Quant Reason Statistics* Calculus*	Anatomy Chemistry II Physics	Psychology* Sociology Criminal Justice Current Events US Hist Before 1877* US Hist After 1877*	Spanish Speech Teacher's Aide Hannah Cole Aide Career & Leadership Connection Humanities	SAE Internship ♦ JROTC (L.E.T. IV)	Student Organizations: <input type="checkbox"/> FBLA <input type="checkbox"/> FFA <input type="checkbox"/> FCCLA <input type="checkbox"/> SkillsUSA <input type="checkbox"/> DECA <input type="checkbox"/> HOSA <input type="checkbox"/> JROTC

Postsecondary Offerings - For A Complete Listing, go to www.missouriconnections.org .					
Postsecondary	Community College	Technical School/Training Institution	In State		Out of State/Other
	Crowder College www.crowder.edu East Central College www.eastcentral.edu Jefferson College www.jeffco.edu Metropolitan Community College www.mcckc.edu Mineral Area College www.mineralarea.edu Moberly Area Community College www.macc.edu North Central Missouri College www.ncmissouri.edu Ozarks Tech Community College www.otc.edu St. Charles Community College www.stchas.edu St Louis Community College www.stlcc.edu State Fair Community College www.sfccmo.edu Three Rivers Community College www.trcc.edu		Avila University - www.avila.edu Central Methodist University www.centralmethodist.edu College of the Ozarks - www.coto.edu Columbia College - www.ccis.edu Cottey College - www.cottey.edu Culver-Stockton College www.culver.edu Drury University - www.drury.edu Evangel University - www.evangel.edu Fontbonne Univ - www.fontbonne.edu Hannibal-Lagrange College www.hlg.edu Harris-Stowe State Univ - www.hssu.edu Lincoln University - www.lincolnu.edu Lindenwood Univ - www.lindenwood.edu Missouri Baptist Univ - www.mobap.edu Maryville University of St. Louis www.maryville.edu Messenger College www.messengercollege.edu MO Southern State University www.mssu.edu Missouri State University www.missouristate.edu Missouri State University – West Plains www.wp.missouristate.edu Missouri Valley College – www.moval.edu Missouri Western State University www.missouriwestern.edu	Northwest Missouri State University www.nwmissouri.edu Park University - www.park.edu Rockhurst University www.rockhurst.edu Saint Louis Univ - www.imagine.stu.edu St Louis Christian College www.slconline.edu Southeast MO State University www.semo.edu Southwest Baptist University www.sbuniv.edu Stephens College - www.stephens.edu Truman State Univ - www.truman.edu Univ of Central MO - www.ucmo.edu University of MO – Columbia www.missouri.edu University of MO – Kansas City www.umkc.edu University of MO – St Louis www.umsl.edu Washington University - www.wustl.edu Westminster College www.westminster-mo.edu Webster University www.websteruniv.edu William Jewell College - www.jewell.edu William Woods University www.williamwoods.edu	<ul style="list-style-type: none"> Apprenticeship Military On-the-Job Training Baptist Bible College & Graduate School www.baptist.edu Calvary Bible College and Theological Seminary - www.calvary.edu Colorado Technical University www.coloradotech.com Conception Seminary College www.conceptionabbey.org Grantham University www.grantham.edu National American University www.national.edu Paris II Educational Center www.parisii.net Wentworth Military Academy www.wma1880.org
Sample Careers By Educational Level - For Occupational Specialties, go to www.careerclusters.org or www.missouriconnections.org					
On-The-Job Training or Less	Technical Training or Associate Degree	Bachelors Degree		Masters Degree or More	
Audi-Visual Specialists Coaches and Scouts Library Assistant Teacher Aides	Adult and Vocational Education Instructors Fitness Trainers and Aerobics Instructors Library Technical Assistants Preschool Teachers Teacher Assistants	Adult and Vocational Education Instructors Adult Literacy, Remedial Education, GED Teachers Audio-Visual Specialists Education Administrators Elementary School Teachers Employee Training Specialists High School Teachers Kindergarten Teachers Middle School Teachers Poets, Lyricists, and Creative Writer Public Health Educators Special Education Teachers		Adult and Vocational Education Instructors Audiologists Coaches and Scouts College and University Administrators Curriculum and Instruction Dieticians and Nutritionists Education Administrators Historians Instructional Coordinators Librarians School Psychologists Speech Pathologists Teacher	



Boonville High School
Finance
 Career Cluster Program of Study Template
www.boonville.k12.mo.us

Minimum Graduation Requirements		SUGGESTED COURSE OF HIGH SCHOOL STUDY It is suggested that students consider dual credit, articulation, or advanced placement opportunities for postsecondary credit.						
	Grade	English	Math	Science	Social Studies	Required Courses, Elective Options	Boonslick Technical Education Center	Additional Learning Opportunities
Secondary	9	ELA I	Algebra I	Physical Science	American History	PE Health Spanish Computer Apps. Intro to Business Career & Leadership Connection	Marketing ♦	School-Based: <input type="checkbox"/> Career Research <input type="checkbox"/> Cooperative Education <input type="checkbox"/> Internship <input type="checkbox"/> Job Shadowing <input type="checkbox"/> Service Learning Project <input type="checkbox"/> Other: _____
	10	ELA II	Geometry	Biology	World Geography/ World History	Personal Finance Comp App/Adv. Comp Business Econ Spanish Business Sports Management Career & Leadership Connection	Adv Marketing ♦ PLTW Computer Science Principles *	Community Based: <input type="checkbox"/> Mentorship <input type="checkbox"/> Volunteer <input type="checkbox"/> Part-time Employment <input type="checkbox"/> Other: _____
	11	ELA III	Algebra II	Botany, Zoology, Earth Science, Chemistry	Government or Honors Government*	Accounting I Business Econ Bus & Criminal Law Speech* Spanish Business Sports Management Career & Leadership Connection	Agricultural Mngmt & Economics (odd) ♦* Medical Terminology * Retail Marketing Fashion Marketing Hosp., Travel, & Tourism IT Fundamentals	Assessments/Certifications: <input type="checkbox"/> Technical Skills Attainment (TSA) <input type="checkbox"/> Other: _____
	12	ELA IV or College Prep English*	Pre-Calc Alg* Pre-Calc Trig* Quant Reason Statistics* Calculus*	Anatomy Chemistry II Physics	Psychology* Sociology Government Criminal Justice Current Events US Hist Before 1877* US Hist After 1877*	Bus & Criminal Law Business Economics Business Law Accounting II Spanish Business Sports Management Career & Leadership Connection	Agricultural Mngmt & Economics (odd) ♦* Medical Terminology * Retail Marketing Fashion Marketing Hosp., Travel, & Tourism Marketing Internship	Placement Assessments: <input type="checkbox"/> Accuplacer <input type="checkbox"/> ACT <input type="checkbox"/> PSAT <input type="checkbox"/> SAT <input type="checkbox"/> ASVAB <input type="checkbox"/> Other: _____
								Student Organizations: <input type="checkbox"/> FBLA <input type="checkbox"/> FFA <input type="checkbox"/> FCCLA <input type="checkbox"/> SkillsUSA <input type="checkbox"/> DECA <input type="checkbox"/> HOSA <input type="checkbox"/> JROTC

Postsecondary Offerings – For A Complete Listing, go to www.missouriconnections.org

Postsecondary	Community College	Technical School	In State		Out of State/Other
	Crowder College www.crowder.edu East Central College www.eastcentral.edu Jefferson College www.jeffco.edu Metropolitan Community College www.mcckc.edu Moberly Area Community College www.macc.edu North Central Missouri College www.ncmissouri.edu Ozarks Technical Comm. College www.otc.edu St Louis Community College www.stlcc.edu St. Charles Community College www.stchas.edu State Fair Community College www.sfccmo.edu Three Rivers Community College www.trcc.edu			Avila University - www.avila.edu Central Methodist University www.centralmethodist.edu Columbia College - www.ccis.edu College of the Ozarks - www.coto.edu Culver-Stockton College www.culver.edu DeVry University – www.devry.edu Drury University - www.drury.edu Evangel University - www.evangel.edu Everest College www.everest-college.com Fontbonne Univ - www.fontbonne.edu Hannibal-Lagrange College www.hlg.edu Hickey College - www.hickeycollege.edu Lincoln University - www.lincolnu.edu Lindenwood Univ - www.lindenwood.edu Maryville University of St. Louis www.maryville.edu Missouri College www.missouricollege.com MO Southern State University www.mssu.edu Missouri State University www.missouristate.edu Missouri Valley College www.moval.edu Missouri Western State University www.missouriwestern.edu	Northwest Missouri State University www.nwmissouri.edu Park University - www.park.edu Rockhurst University www.rockhurst.edu Saint Louis University www.imagine.stu.edu Southeast MO State University www.semo.edu Stephens College - www.stephens.edu Truman State Univ - www.truman.edu Univ of Central MO - www.ucmo.edu Univ of MO – Columbia www.missouri.edu University of MO – Kansas City www.umkc.edu Univ of MO – Rolla – www.umar.edu Univ of MO – St Louis - www.umsl.edu Washington University - www.wustl.edu Webster University - www.websteruniv.edu Westminster College www.westminster-mo.edu William Jewell College - www.jewell.edu William Woods University www.williamwoods.edu Vatterott College www.vatterott-college.edu

Sample Careers By Educational Level – For Occupational Specialties, go to www.careerclusters.org or www.missouriconnections.org

On-the-Job Training	Technical or Associate Degree	Bachelors Degree	Masters Degree or More
Bank Tellers Bill and Account Collectors Brokerage Clerks Credit Checkers and Authorizers Insurance Adjusters and Examiners Insurance Claims Clerk Insurance Policy and Claims Clerks Loan Clerks Tax Preparers Title Examiners and Searchers	Claims Examiners, Property and Casualty Insurance Insurance Appraisers, Auto Damage Insurance Sales Agents Insurance Underwriters	Accountants and Auditors Appraisers and Assessors Budget Analysts Credit Analysts Financial Analysts Financial Examiners Financial Managers Insurance Agents Insurance Underwriters Loan Officers Securities Salespeople	Actuaries Business Teacher, Postsecondary Economists Treasurers and Controllers



Boonville High School
Government & Public Administration
 Career Cluster Program of Study Template
www.boonville.k12.mo.us

Minimum Graduation Requirements		SUGGESTED COURSE OF HIGH SCHOOL STUDY It is suggested that students consider dual credit, articulation, or advanced placement opportunities for postsecondary credit.						
	Grade	English	Math	Science	Social Studies	Required Courses, Elective Options	Boonslick Technical Education Center	Additional Learning Opportunities
Secondary	9	ELA I	Algebra I	Physical Science	American History	PE Health Spanish	JROTC (L.E.T. I) Marketing ♦ IT Technology Fundamentals	School-Based: <input type="checkbox"/> Career Research <input type="checkbox"/> Cooperative Education <input type="checkbox"/> Internship <input type="checkbox"/> Job Shadowing <input type="checkbox"/> Service Learning Project <input type="checkbox"/> Other: _____
	10	ELA II	Geometry	Biology	World Geography or World History	Personal Finance Spanish Computer Appl Business Law Business Mgmt	JROTC (L.E.T. II) Advanced Marketing ♦ PLTW Cybersecurity *	Community Based: <input type="checkbox"/> Mentorship <input type="checkbox"/> Volunteer <input type="checkbox"/> Part-time Employment <input type="checkbox"/> Other: _____
	11	ELA III	Algebra II	Botany, Zoology, Earth Science, Chemistry	Government or Honors Government*	Speech* Spanish Business & Polit Econ Accounting I and II	JROTC (L.E.T. III) Entrepreneurship	Assessments/Certifications: <input type="checkbox"/> Technical Skills Attainment (TSA) <input type="checkbox"/> Other: _____
	12	ELA IV or College Prep English*	Pre-Calc Alg* Pre-Calc Trig* Quant Reason Statistics* Calculus*	Anatomy Chemistry II Physics	Psychology* Sociology Criminal Justice Current Events US Hist Before 1877* US Hist After 1877*	Spanish Accounting I and II Business & Polit Econ	JROTC (L.E.T. IV) Entrepreneurship Marketing Internship	Placement Assessments: <input type="checkbox"/> Accuplacer <input type="checkbox"/> ACT <input type="checkbox"/> PSAT <input type="checkbox"/> SAT <input type="checkbox"/> ASVAB <input type="checkbox"/> Other: _____
								Student Organizations: <input type="checkbox"/> FBLA <input type="checkbox"/> FFA <input type="checkbox"/> FCCLA <input type="checkbox"/> SkillsUSA <input type="checkbox"/> DECA <input type="checkbox"/> HOSA <input type="checkbox"/> JROTC

Postsecondary Offerings – For A Complete Listing, go to www.missouriconnections.org					
Postsecondary	Community College	Technical School/Training Institution	In State		Out of State/Other
	Crowder College www.crowder.edu East Central College www.eastcentral.edu Moberly Area Community College www.macc.edu	Cape Girardeau Career/Tech Center www.cape.k12.mo.us/cc/default.htm Clinton Technical School www.ed2go.com/cts Franklin Technology – MSSU www.ftcjoplin.com Grand River Technical School www.grts.org Hillyard Technical Center www.hillyardtech.com Lex La-Ray Technical Center www.lexington.k12.mo.us Moberly Area Technical Center www.moberly.k12.mo.us Pike-Lincoln Technical Center http://pltc.k12.mo.us Saline County Career Center www.marshallschools.com/sccc Sikeston Career & Technology Center www.sikestone.k12.mo.us	Avila University www.avila.edu Central Methodist University www.centralmethodist.edu College of the Ozarks www.cofo.edu Columbia College www.ccis.edu Culver-Stockton College www.culver.edu Drury University www.drury.edu Evangel University www.evangel.edu Everest College www.everest-college.edu Fontbonne University www.fontbonne.edu Harris-Stowe State University www.hssu.edu Lincoln University www.lincolnu.edu Lindenwood University www.lindenwood.edu Maryville University of Saint Louis www.maryville.edu Missouri Baptist University www.mobap.edu Missouri Southern State University www.mssu.edu Missouri State University www.missouristate.edu	Missouri Valley College www.moval.edu Missouri Western State University www.missouriwestern.edu Northwest Missouri State University www.nwmissouri.edu Park University www.park.edu Rockhurst University www.rockhurst.edu Saint Louis University www.imagine.slu.edu Southeast MO State University www.semo.edu Southwest Baptist University www.sbuniv.edu Stephens College www.stephens.edu Truman State University www.truman.edu University of Central Missouri www.ucmo.edu University of MO – Columbia www.missouri.edu University of Missouri – Kansas City www.umkc.edu University of MO – St Louis www.umsl.edu Washington University www.wustl.edu Webster University www.webster.edu	<ul style="list-style-type: none"> Apprenticeship Military On-the-Job Training ITT Technical Institute www.itt-tech.edu Kansas City Art Institute www.kcai.edu National American University www.national.edu

Sample Careers By Educational Level – For Occupational Specialties, go to www.careerclusters.org or www.missouriconnections.org

On-The-Job Training or Less	Technical Training or Associate Degree	Bachelors Degree	Masters Degree or More
Compliance Officers and Inspectors Government Benefits Interviewers Interpreters and Translators License Clerks Mail Carriers Meter Readers Postal Clerks	Assessors Eligibility Interviewers, Government Programs General, Operations and Transportation Managers Government Property Inspectors and Investigators Licensing Examiners and Inspectors Mapping Technicians Municipal and Court Clerks Postmasters and Mail Superintendents Surveying Technicians Tax Examiners, Collectors, and Revenue Agents Tax Preparers	Administrative Services Managers Broadcast News Analysts & Public Relations Specialists City and Regional Planning Aides Emergency Management Specialists Equal Opportunity Representatives and Officers Financial Examiners Legislators Reporters and Correspondents Social and Community Service Managers Storage and Distribution Managers Urban and Regional Planners	Architecture Teachers, Postsecondary Chief Executives Communications Teachers, Postsecondary Coroners Economists Engineering Managers Political Science Teachers, Postsecondary Political Scientists



Boonville High School
Health Sciences
 Career Cluster Program of Study Template
www.boonville.k12.mo.us

Minimum Graduation Requirements		SUGGESTED COURSE OF HIGH SCHOOL STUDY It is suggested that students consider dual credit, articulation, or advanced placement opportunities for postsecondary credit.						
	Grade	English	Math	Science	Social Studies	Required Courses, Elective Options	Boonslick Technical Education Center	Additional Learning Opportunities
Secondary	9	ELA I	Algebra I	Physical Science	American History	PE Health Spanish Career & Leadership Connections Foods I & II	PLTW Prin of Biomed Science *	School-Based: <input type="checkbox"/> Career Research <input type="checkbox"/> Cooperative Education <input type="checkbox"/> Internship <input type="checkbox"/> Job Shadowing <input type="checkbox"/> Service Learning Project <input type="checkbox"/> Other: _____
	10	ELA II	Geometry	Biology	World Geography or World History	PE Personal Finance Spanish Computer Apps. Foods I & II	Intro to Health Science PLTW Prin of Biomed Sci * PLTW Human Body Systems*	Community Based: <input type="checkbox"/> Mentorship <input type="checkbox"/> Volunteer <input type="checkbox"/> Part-time Employment <input type="checkbox"/> Other: _____ Assessments/Certifications: <input type="checkbox"/> Technical Skills Attainment (TSA) <input type="checkbox"/> Other: _____
	11	ELA III	Algebra II	Botany, Zoology, Earth Science, Chemistry	Government or Honors Government*	PE Child Development I & II Family Relations Spanish Foods I & II Speech*	Health Science I Lab ♦ Intro to Health Science Medical Terminology I&II* PLTW Prin of Biomed Sci* PLTW Human Body Syst*	Placement Assessments: <input type="checkbox"/> Accuplacer <input type="checkbox"/> ACT <input type="checkbox"/> PSAT <input type="checkbox"/> SAT <input type="checkbox"/> ASVAB <input type="checkbox"/> Other: _____
	12	ELA IV or College Prep English*	Pre-Calc Alg* Pre-Calc Trig* Quant Reason Statistics* Calculus*	Anatomy Chemistry II Physics	Psychology* Sociology Criminal Justice Current Events US Hist Before 1877* US Hist After 1877*	PE Spanish Speech* Foods I & II	Health Science I & II Lab ♦ Intro to Health Science Medical Terminology I&II* PLTW Prin of Biomed Sci* PLTW Human Body Systems*	Student Organizations: <input type="checkbox"/> FBLA <input type="checkbox"/> FFA <input type="checkbox"/> FCCLA <input type="checkbox"/> SkillsUSA <input type="checkbox"/> DECA <input type="checkbox"/> HOSA <input type="checkbox"/> JROTC

Postsecondary Offerings - For A Complete Listing, go to www.missouriconnections.org.

Postsecondary	Community College	Technical School/Training Institution	In State		Out of State/Other
	<p>Crowder College www.crowder.edu</p> <p>East Central College www.eastcentral.edu</p> <p>Jefferson College www.jeffco.edu</p> <p>Metropolitan Comm College www.mcckc.edu</p> <p>Mineral Area College www.mineralarea.edu</p> <p>Moberly Area Comm College www.macc.edu</p> <p>North Central MO College www.ncmissouri.edu</p> <p>Ozarks Tech Comm College www.otc.edu</p> <p>St. Charles Comm College www.stchas.edu</p> <p>St Louis Community College www.stlcc.edu</p> <p>State Fair Community College www.sfccmo.edu</p> <p>Three Rivers Comm College www.trcc.edu</p>	<p>Cape Girardeau Career/Tech Center www.cape.k12.mo.us/cc/default.htm</p> <p>Cass Career Center www.harrisonville.k12.mo.us</p> <p>Columbia Career Center www.career-center.org</p> <p>Four Rivers Technical Center www.washington.k12.mo.us</p> <p>Franklin Tech - MSSU www.ftcjoplin.com</p> <p>Grand River Tech School - www.grts.org</p> <p>Herndon Career Center www.herndoncareercenter.com</p> <p>Hillyard Technical Center www.hillyardtech.com</p> <p>Kennett Career and Technology Center www.kennett.k12.mo.us</p> <p>Lex La-Ray Tech Car - www.lexington.k12.mo.us</p> <p>Moberly Area Tech Center www.moberly.k12.mo.us</p> <p>Northland Career Center www.northlandcareercenter.com</p> <p>Northwest Tech School - www.maryville.k12.mo.us</p> <p>Poplar Bluff Schools - www.r1schools.org</p> <p>Sikeston Career and Technology Center www.sikeston.k12.mo.us</p> <p>South Central Career Center www.wphs.k12.mo.us</p> <p>Waynesville Technical Academy www.waynesville.k12.mo.us</p>	<p>AT Skill University of Health Sciences www.atsu.edu</p> <p>Avila University - www.avila.edu</p> <p>Bryan College - www.bryancollege.com</p> <p>Central Methodist University www.centralmethodist.edu</p> <p>College of the Ozarks - www.coto.edu</p> <p>Columbia College - www.ccis.edu</p> <p>Culver-Stockton College - www.culver.edu</p> <p>Drury University - www.drury.edu</p> <p>Evangel University - www.evangel.edu</p> <p>Everest College www.everest-college.com</p> <p>Fontbonne Univ - www.fontbonne.edu</p> <p>Hannibal-Lagrange College www.hlg.edu</p> <p>Harris-Stowe State Univ -www.hssu.edu</p> <p>Lincoln University - www.lincolnu.edu</p> <p>Lindenwood Univ - www.lindenwood.edu</p> <p>Maryville Univ of St. Louis www.maryville.edu</p> <p>Missouri College www.missouricollege.com</p> <p>Missouri Baptist Univ - www.mobap.edu</p> <p>MO Southern State Univ - www.mssu.edu</p> <p>Missouri State University www.missouristate.edu</p> <p>Missouri State University – West Plains www.wp.missouristate.edu</p>	<p>Missouri Valley College –www.moval.edu</p> <p>Missouri Western State University www.missouriwestern.edu</p> <p>Northwest Missouri State University www.nwmissouri.edu</p> <p>Park University - www.park.edu</p> <p>Patricia Stevens College www.patriciastevenscollege.edu</p> <p>Rockhurst University - www.rockhurst.edu</p> <p>Saint Louis Univ - www.imagine.stu.edu</p> <p>Sanford-Brown College www.sanford-browncollege.com</p> <p>Southeast MO State Univ -www.semo.edu</p> <p>Southwest Baptist Univ -www.sbuniv.edu</p> <p>Stephens College - www.stephens.edu</p> <p>Truman State Univ - www.truman.edu</p> <p>Univ of Central MO - www.ucmo.edu</p> <p>Univ of MO – Columbia -www.missouri.edu</p> <p>Univ of MO – Kansas City www.umkc.edu</p> <p>Univ of MO – St Louis - www.umsl.edu</p> <p>Univ of Phoenix – www.phoenix.edu</p> <p>Vatterott College www.vatterott-college.edu</p> <p>Washington University - www.wustl.edu</p> <p>Webster University - www.websteruniv.edu</p> <p>William Jewell College - www.jewell.edu</p> <p>William Woods University www.williamwoods.edu</p>	<ul style="list-style-type: none"> Apprenticeship Military On-the-Job Training <p>Allied College - www.hightechinstitute.edu</p> <p>Barnes-Jewish College of Nursing & Allied Health - www.barnesjewishcollege.edu</p> <p>Cleveland Chiropractic College www.cleveland.edu</p> <p>Colorado Tech Univ www.coloradotech.com</p> <p>Cox Health - www.coxhealth.com</p> <p>Chamberlain College of Nursing www.chamberlain.edu</p> <p>Heritage Coll - www.heritage-college.com</p> <p>Cox College of Nursing & Health Science www.coxcollege.edu</p> <p>Logan Coll of Chiropractic - www.logan.edu</p> <p>Lutheran School of Nursing www.nursingschoollmc.com</p> <p>Kansas City Univ of Med & Biosciences - www.kcumb.edu</p> <p>Research Med Ctr School of Nuclear Med www.researchmedicalcenter.com</p> <p>St John's Reg Health Car -www.stjohns.com</p> <p>Saint Luke's College - www.saint-lukes.org</p> <p>St Louis College of Health Careers www.slchc.com</p> <p>St Louis Coll Pharmacy - www.stlcoop.edu</p> <p>Southeast MO Hospital College of Nursing www.souteastmissourihospital.com</p> <p>Truman Med Ctr School - Nurse Anesthesia www.trumed.org</p>

Sample Careers By Educational Level - For Occupational Specialties, go to www.careerclusters.org or www.missouriconnections.org

On-The-Job Training or Less	Technical Training or Associate Degree	Bachelors Degree	Masters Degree or More
<p>Dental Assistants</p> <p>Dental Laboratory Technicians</p> <p>Home Health Aides</p> <p>Medical Appliance Technicians</p> <p>Medical Assistants</p> <p>Medical Equipment Preparers</p> <p>Medical Secretaries</p> <p>Personal and Home Care Aides</p> <p>Pharmacy Aides</p> <p>Pharmacy Technicians</p> <p>Physical Therapist Aides</p> <p>Psychiatric Aides</p>	<p>Cardiovascular Technologists</p> <p>Dental Hygienists</p> <p>Emergency Medical Technicians</p> <p>Health Information Technicians</p> <p>Licensed Practical Nurses</p> <p>Medical Laboratory Technicians</p> <p>Medical Sonographers</p> <p>Medical Transcriptionists</p> <p>Nursing Assistants</p> <p>Occupational Therapist Assistants</p> <p>Physical Therapist Assistants</p> <p>Radiation Therapists</p> <p>Radiologic Technologists</p> <p>Registered Nurses</p> <p>Respiratory Therapists</p> <p>Surgical Technologists</p> <p>Veterinary Technologists and Technicians</p>	<p>Administrative Services Managers</p> <p>Athletic Trainers</p> <p>Biomedical Engineers</p> <p>Computer Programmers</p> <p>Computer Software Engineers, Applications</p> <p>Dietitians</p> <p>Health Educators</p> <p>Medical and Clinical Laboratory Technologists</p> <p>Medical Laboratory Technologists</p> <p>Occupational Health and Safety Specialists</p> <p>Orthotic and Prosthetic Specialists</p> <p>Petroleum Engineers</p> <p>Public Relations Specialists</p> <p>Recreational Therapists</p> <p>Rehabilitation Counselors</p>	<p>Athletic Trainers, Physical and Occupational Therapists</p> <p>Biologists, Physicists, Hydrologists, Epidemiologists</p> <p>Clinical Psychologists and Mental Health Counselors</p> <p>Computer and Information Scientists, Research</p> <p>Dietitians and Nutritionists</p> <p>Farm and Home Management Advisors</p> <p>Health Specialties Teachers, Postsecondary</p> <p>Home Economics Teachers, Postsecondary</p> <p>Medical and Health Services Managers</p> <p>Medical Scientists, Except Epidemiologists</p> <p>Natural Sciences Mgrs, Zoologists and Wildlife Biologists</p> <p>Nurse Anesthetists and Physician Assistants</p> <p>Orthotics and Prosthetics</p> <p>Pharmacists</p> <p>Speech-Language Pathologists</p> <p>Communications Teachers, Postsecondary</p> <p>Veterinarians</p>



Boonville High School
Hospitality & Tourism
 Career Cluster Program of Study Template
www.boonville.k12.mo.us

Minimum Graduation Requirements		SUGGESTED COURSE OF HIGH SCHOOL STUDY It is suggested that students consider dual credit, articulation, or advanced placement opportunities for postsecondary credit.						
	Grade	English	Math	Science	Social Studies	Required Courses, Elective Options	<u>Boonslick Technical Education Center</u>	Additional Learning Opportunities
Secondary	9	ELA I	Algebra I	Physical Science	American History	PE Health Spanish Graphic Arts Yearbook Foods I & II	Marketing♦	School-Based: <input type="checkbox"/> Career Research <input type="checkbox"/> Cooperative Education <input type="checkbox"/> Internship <input type="checkbox"/> Job Shadowing <input type="checkbox"/> Service Learning Project <input type="checkbox"/> Other: <hr/>
	10	ELA II	Geometry	Biology	World Geography or World History	Personal Finance Spanish Foods I & II Computer Apps. Adv. Graphic Arts Intro to Business Business Economics Newspaper Yearbook	Advanced Marketing♦	Community Based: <input type="checkbox"/> Mentorship <input type="checkbox"/> Volunteer <input type="checkbox"/> Part-time Employment <input type="checkbox"/> Other: <hr/> Assessments/Certifications: <input type="checkbox"/> Technical Skills Attainment (TSA) <input type="checkbox"/> Other: <hr/>
	11	ELA III	Algebra II	Botany Zoology Chemistry, Earth Science	Government or Honors Government*	Bus & Criminal Law Accounting I Foods I & II Web Design Spanish Business Mgmt. Newspaper Yearbook Humanities Speech*	Entrepreneurship Marketing♦ Retail Marketing Hospitality, Travel & Tourism Advanced Marketing♦	Placement Assessments: <input type="checkbox"/> Accuplacer <input type="checkbox"/> ACT <input type="checkbox"/> PSAT <input type="checkbox"/> SAT <input type="checkbox"/> ASVAB <input type="checkbox"/> Other: <hr/>
	12	ELA IV Or College Prep English*	Pre-Calc Alg* Pre-Calc Trig* Quant Reason Statistics* Calculus*	Anatomy Chemistry II Physics	Psychology* Sociology Criminal Justice Current Events US Hist Before 1877* US Hist After 1877*	Speech* Accounting II Foods I & II Spanish Multimedia Newspaper Yearbook Humanities	Marketing Internship Entrepreneurship Marketing♦ Retail Marketing Hospitality, Travel & Tourism	Student Organizations: <input type="checkbox"/> FBLA <input type="checkbox"/> FFA <input type="checkbox"/> FCCLA <input type="checkbox"/> SkillsUSA <input type="checkbox"/> DECA <input type="checkbox"/> HOSA <input type="checkbox"/> JROTC

♦ Articulated Credit * Dual Credit

Revised 2/18/2020

Postsecondary Offerings - For A Complete Listing, go to www.missouriconnections.org					
Postsecondary	Community College	Technical School/Training Institution	In State		Out of State/Other
	Crowder College www.crowder.edu East Central College www.eastcentral.edu Jefferson College www.jeffco.edu Metropolitan Community College www.mccck.edu Mineral Area College www.mineralarea.edu Ozarks Tech Community College www.otc.edu St Louis Community College www.stlcc.edu Three Rivers Community College www.trcc.edu	Cape Girardeau Career/Tech Center www.cape.k12.mo.us/cc/default.htm Gibson Technical Center www.wolves.k12.mo.us/gtc Lake Career and Technical Center www.camdentonschools.org Lebanon Technology Career Center www.lebanon.k12.mo.us Macon Area Vocational Technical School www.macon.k12.mo.us/vocational Northland Career Center www.northlandcareercenter.com Northwest Tech School - www.maryville.k12.mo.us Nevada Regional Technical Center www.nevada.k12.mo.us.us Pemiscot County Career & Tech Car www.wphs.k12.mo.us South Central Career Center www.wphs.k12.mo.us Waynesville Technical Academy www.waynesville.k12.mo.us	Avila University - www.avila.edu Central Methodist University www.centralmethodist.edu College of the Ozarks - www.coto.edu Columbia College - www.ccis.edu Culver-Stockton College www.culver.edu Drury University - www.drury.edu Evangel University - www.evangel.edu Fontbonne Univ - www.fontbonne.edu Lincoln University - www.lincolnu.edu Lindenwood Univ - www.lindenwood.edu Missouri Baptist Univ - www.mobap.edu MO Southern State University www.mssu.edu Missouri State University www.missouristate.edu Missouri Valley College www.moval.edu Missouri Western State University www.missouriwestern.edu Northwest Missouri State University www.nwmissouri.edu	Park University - www.park.edu Rockhurst University - www.rockhurst.edu Saint Louis Univ - www.imagine.stu.edu Southeast MO State Univ - www.semo.edu Southwest Baptist Univ - www.sbuiv.edu Stephens College - www.stephens.edu Truman State Univ - www.truman.edu Univ of Central MO - www.ucmo.edu University of MO – Columbia www.missouri.edu Univ of MO – Kansas City www.umkc.edu Univ of MO – St Louis - www.umsl.edu Washington University - www.wustl.edu Webster University www.websteruniv.edu Westminster College www.westminster-mo.edu William Jewell College - www.jewell.edu William Woods University www.williamwoods.edu	<ul style="list-style-type: none"> Apprenticeship Military On-the-Job Training Kansas City Art Institute www.kcai.edu Lecole Culinaire www.lecoleculinarie.com Midwestern Baptist Theological Seminary – www.mbts.edu
Sample Careers By Educational Level - For Occupational Specialties, go to www.careerclusters.org or www.missouriconnections.org					
On-The-Job Training or Less	Technical Training or Associate Degree	Bachelors Degree		Masters Degree or More	
Amusement and Recreation Workers Baggage Porters and Bellhops Bartenders Casino Gaming Workers Chefs and Dinner Cooks Concierges Counter Attendants Fast Food Cooks Food Preparation Workers Hotel Desk Clerks Janitors and Cleaners Kitchen Helpers Maids and Housekeepers Professional Athletes Recreation Attendants Recreation Guides Recreation Workers Reservation and Ticket Agents Restaurant Hosts Tour Guides Umpires and Referees Waiters and Waitresses	Animal Trainers Casino Gaming Workers First-Line Supervisors/Managers of Housekeeping and Janitorial Workers Flight Attendants Food Service Managers Lodging Managers Reservation and Transportation Ticket Agents and Travel Clerks Residential Advisors Self Enrichment Education Teachers Travel Agents	Interpreters and Translators Meeting and Convention Planners Recreation Workers Set and Exhibit Designers Social and Community Service Managers		Farm and Home Management Advisors	



Boonville High School
Human Services
 Career Cluster Program of Study Template
www.boonville.k12.mo.us

Minimum Graduation Requirements		SUGGESTED COURSE OF HIGH SCHOOL STUDY It is suggested that students consider dual credit, articulation, or advanced placement opportunities for postsecondary credit.						
	Grade	English	Math	Science	Social Studies	Required Courses, Elective Options	Boonslick Technical Education Center	Additional Learning Opportunities
Secondary	9	ELA I	Algebra I	Physical Science	American History	Health Spanish Graphic Arts Career & Leadership Connections FACS I & II	Marketing♦ JROTC (L.E.T. I) Woodworking I	School-Based: <input type="checkbox"/> Career Research <input type="checkbox"/> Cooperative Education <input type="checkbox"/> Internship <input type="checkbox"/> Job Shadowing <input type="checkbox"/> Service Learning Project <input type="checkbox"/> Other: _____
	10	ELA II	Geometry	Biology	World Geography or World History	Personal Finance Family Relations Graphic Arts/Adv Child Development Computer Apps.	Intro to Health Science Adv. Marketing♦ JROTC (L.E.T. II) Advanced Woodworking	Community Based: <input type="checkbox"/> Mentorship <input type="checkbox"/> Volunteer <input type="checkbox"/> Part-time Employment <input type="checkbox"/> Other: _____
	11	ELA III	Algebra II	Botany, Zoology, Earth Science Chemistry	Government or Honors Government*	Graphic Arts/Adv Business Law Teacher's Aide Hannah Cole Aide Speech*	Intro to Health Science Retail Marketing Marketing♦ JROTC (L.E.T. III)	Assessments/Certifications: <input type="checkbox"/> Technical Skills Attainment (TSA) <input type="checkbox"/> Other: _____
	12	ELA IV or College Prep English*	Pre-Calc Alg* Pre-Calc Trig* Quant Reason Statistics* Calculus*	Anatomy Chemistry II Physics	Psychology* Sociology Criminal Justice Current Events US Hist Before 1877* US Hist After 1877*	Bus & Sports Mgmt. Teacher's Aide Hannah Cole Aide Speech*	Intro to Health Science Retail Marketing JROTC (L.E.T. IV)	Placement Assessments: ✚ Accuplacer ✚ ACT ✚ PSAT ✚ SAT ✚ ASVAB ✚ Other: _____
								Student Organizations: <input type="checkbox"/> FBLA <input type="checkbox"/> FFA <input type="checkbox"/> FCCLA <input type="checkbox"/> SkillsUSA <input type="checkbox"/> DECA <input type="checkbox"/> HOSA <input type="checkbox"/> JROTC

Postsecondary Offerings - For A Complete Listing, go to www.missouriconnections.org					
Postsecondary	Community College	Technical School/Training Institution	In State	Out of State/Other	
		Crowder College www.crowder.edu East Central College www.eastcentral.edu St Louis Community College www.stlcc.edu	Colorado Technical University www.coloradotech.com Davis Hart Career Center www.mexicoschools.net Herndon Career Center www.herndoncareercenter.com Heritage Tech Institute www.hightechinstitute.edu Massage Therapy Training Institute www.massagetherapytraininginstitute.com Midwest Institute www.midwestinstitute.com Neosho Beauty College www.neoshobeautycollege.com Paris II Educational Center - www.parisii.net Patsy & Robs Academy of Beauty www.praob.edu Pinnacle Career Institute www.pcittraining.edu Professional Massage Training Center www.pmtc.edu Regency Beauty Institute www.regencybeauty.com St Charles School of Massage Therapy www.dayspaacademy.net	Allied College - www.alliedcollege.edu Avila University - www.avila.edu Central Bible College - www.cbccag.edu Central Methodist University www.centralmethodist.edu College of the Ozarks - www.coto.edu Columbia College - www.ccis.edu Conception Seminary College www.conceptionabbey.org Culver-Stockton College www.culver.edu Drury University - www.drury.edu Evangel University - www.evangel.edu Fontbonne Univ - www.fontbonne.edu Hannibal-Lagrange College www.hlg.edu Lincoln University - www.lincolnu.edu Lindenwood Univ - www.lindenwood.edu Maryville University of St. Louis www.maryville.edu Messenger College www.messengercollege.edu Metro Business College www.metrobusinesscollege.edu Midwest University - www.midwest.edu Missouri Baptist Univ - www.mobap.edu Missouri College www.missouricollege.com Missouri College of Cosmetology www.missouricosmo.com MO Southern State University www.mssu.edu Missouri State University www.missouristate.edu Missouri Valley College www.moval.edu	Missouri Western State University www.missouriwestern.edu Northwest Missouri State University www.nwmissouri.edu Ozark Christian College - www.occ.edu Park University - www.park.edu Rockhurst University www.rockhurst.edu Saint Louis Christian College www.slconlin.edu St Louis College of Health Careers www.slchc.com Saint Louis Univ - www.imagine.stu.edu Sanford-Brown College www.sanford-browncollege.com Southeast MO State University www.semo.edu Southwest Baptist University www.sbuniv.edu Truman State Univ - www.truman.edu Univ of Central MO - www.ucmo.edu University of MO – Columbia www.missouri.edu University of MO – Kansas City www.umkc.edu Univ of MO – St Louis - www.umsl.edu Vatterott College www.vatterott-college.edu Washington University - www.wustl.edu Webster University - www.websteruniv.edu Westminster College www.westminster-mo.edu William Woods University www.williamwoods.edu
Sample Careers By Educational Level – For Occupational Specialties, go to www.careerclusters.org or www.missouriconnections.org					
	On-The-Job Training or Less	Technical Training or Associate Degree	Bachelors Degree	Masters Degree or More	
	Child Care Workers Customer Service Representatives Funeral Attendants Laundry and Dry Cleaning Workers Lifeguards and Other Recreational Protective Service Workers Residential Counselors Social and Human Service Assistants	Barbers Embalmers and Funeral Director Government Programs Hairstylists and Cosmetologists Manicurists Preschool Teacher Professional Makeup Artists Residential Advisors Skin Care Specialists Social and Human Service Assistants	Addiction Counselors Director, Religious Activities and Education Early Childhood Educator Financial Counselors Health Educators Recreation Workers Rehabilitation Counselors Social and Community Service Manager Social Workers	Clergy Industrial-Organizational Psychologists Marriage and Family therapists Mental Health Counselors Psychologists Rehabilitation Counselors School Counselors Social Workers Substance Abuse and Behavioral Disorder Counselors Teachers, Postsecondary	



Boonville High School
Information Technology
 Career Cluster Program of Study Template
www.boonville.k12.mo.us

Minimum Graduation Requirements		SUGGESTED COURSE OF HIGH SCHOOL STUDY It is suggested that students consider dual credit, articulation, or advanced placement opportunities for postsecondary credit.						
	Grade	English	Math	Science	Social Studies	Required Courses, Elective Options	<u>Boonslick Technical Education Center</u>	Additional Learning Opportunities
Secondary	9	ELA I	Algebra I	Physical Science	American History	PE Health Computer Apps. Graphic Arts Career & Leadership Connections	Computer Game Design IT Fundamentals PLTW Engineering* Essentials	School-Based: <input type="checkbox"/> Career Research <input type="checkbox"/> Cooperative Education <input type="checkbox"/> Internship <input type="checkbox"/> Job Shadowing <input type="checkbox"/> Service Learning Project <input type="checkbox"/> Other:
	10	ELA II	Geometry	Biology	World Geography or World History	Personal Finance Graphic Arts/Adv Career & Leadership Connections	PLTW Comp Sci Principles* PLTW Digital Electronics* IT Fundamentals	Community Based: <input type="checkbox"/> Mentorship <input type="checkbox"/> Volunteer <input type="checkbox"/> Part-time Employment <input type="checkbox"/> Other:
	11	ELA III	Algebra II	Botany, Zoology, Earth Science, Chemistry	Government or Honors Government	Multimedia Spanish I Web Design Career & Leadership Connections	PLTW Comp Science* Principles PLTW Cybersecurity* PLTW Digital Electronics* PLTW Robotics*	Assessments/Certifications: <input type="checkbox"/> Technical Skills Attainment (TSA) <input type="checkbox"/> Other:
	12	ELA IV or College Prep English*	Pre-Calc Alg* Pre-Calc Trig* Quant Reason Statistics* Calculus*	Anatomy Chemistry II Physics	Psychology* Sociology Criminal Justice Current Events US Hist Before 1877* US Hist After 1877*	Web Design Multimedia Spanish II Career & Leadership Connections	PLTW Comp Science* Principles PLTW Robotics* PLTW Digital Electronics* PLTW Cybersecurity*	Placement Assessments: <input type="checkbox"/> Accuplacer <input type="checkbox"/> ACT <input type="checkbox"/> PSAT <input type="checkbox"/> SAT <input type="checkbox"/> ASVAB <input type="checkbox"/> Other: Student Organizations: <input type="checkbox"/> FBLA <input type="checkbox"/> FFA <input type="checkbox"/> FCCLA <input type="checkbox"/> SkillsUSA <input type="checkbox"/> DECA <input type="checkbox"/> HOSA <input type="checkbox"/> JROTC

Postsecondary Offerings – For A Complete Listing, go to www.missouriconnections.org					
Postsecondary	Community College	Technical School/Training Institution	In State		Out of State/Other
	Crowder College www.crowder.edu East Central College www.eastcentral.edu Jefferson College www.jeffco.edu Linn State Technical College www.linnstate.edu Metropolitan Community College www.mcckc.edu Mineral Area College www.mineralarea.edu Moberly Area Community College www.macc.edu North Central Missouri College www.ncmissouri.edu Ozarks Technical Comm. College www.otc.edu St. Charles Community College www.stchas.edu St Louis Community College www.stlcc.edu State Fair Community College www.sfccmo.edu Three Rivers Community College www.trcc.edu	Davis Hart Career Center www.mexicoschools.net Herndon Career Center www.herndoncareercenter.com Kirksville Area Tech Center www.kirksville.k12.mo.us Waynesville Technical Academy www.waynesville.k12.mo.us	A.T. Skill University of Health Sciences www.atsu.edu Avila University - www.avila.edu Bryan College - www.bryancollege.com Central Methodist University www.centralmethodist.edu College of the Ozarks - www.coto.edu Columbia College - www.ccis.edu Culver-Stockton College - www.culver.edu DeVry University – www.devry.edu Drury University - www.drury.edu Evangel University - www.evangel.edu Everest College www.everest-college.com Fontbonne Univ - www.fontbonne.edu Hannibal-Lagrange College www.hlq.edu Harris-Stowe State Univ - www.hssu.edu Hickey College - www.hickeycollege.edu Lincoln University - www.lincolnu.edu Lindenwood Univ - www.lindenwood.edu Maryville Univ of St. Louis www.maryville.edu Missouri Baptist Univ - www.mobap.edu Missouri College www.missouricollege.com MO Southern State University www.mssu.edu Missouri State University www.missouristate.edu Missouri State University – West Plains www.wp.missouristate.edu Missouri Valley College www.moval.edu	Missouri Western State University www.missouriwestern.edu Northwest Missouri State University www.nwmissouri.edu Park University - www.park.edu Rockhurst University - www.rockhurst.edu Saint Louis University www.imagine.stu.edu Sanford-Brown College www.sanford-browncollege.com Southeast MO State University www.semo.edu Southwest Baptist University www.sbu.edu Truman State Univ - www.truman.edu Univ of Central MO - www.ucmo.edu University of MO – Columbia www.missouri.edu University of MO – Kansas City www.umkc.edu Univ of MO – Rolla – www.umn.edu Univ of MO – St Louis - www.umsu.edu Univ of Phoenix – www.phoenix.edu Vatterott College www.vatterott-college.edu Washington University - www.wustl.edu Webster University www.websteruniv.edu Westminster College www.westminster-mo.edu William Jewell College - www.jewell.edu William Woods University www.williamwoods.edu	<ul style="list-style-type: none"> Apprenticeship Military On-the-Job Training Colorado Technical University www.coloradotech.com Grantham University www.grantham.edu ITT Technical Institute www.itt-tech.edu Kansas City Art Institute www.kcai.edu Midwest Institute www.midwestinstitute.com Missouri Tech www.motech.edu National American University www.national.edu Pinnacle Career Institute www.pctraining.edu Texas County Technical Institute www.texascountytech.edu

Sample Careers By Educational Level – For Occupational Specialties, go to www.careerclusters.org or www.missouriconnections.org

On-the-Job Training or Less	Technical Training or Associate Degree	Bachelors Degree	Masters Degree or More
	Computer Operators Computer Support Specialists Network Systems and Data Communications Analysts Numerical Tool and Process Control Programmers Web Administrators Web Developers	Computer and Information Systems Managers Computer Engineers Computer Programmers Computer Security Specialists Computer Software Engineers Computer Systems Administrators Computer Systems Analysts Data Communications analysts Database Administrators Graphic Designers Multi-Media Artists and Animators Network and Computer Systems Administrators Software Quality Assurance Engineers and Testers	Computer and Information Scientists, Research Computer Science Teachers, Postsecondary Engineering Managers



Boonville High School
Law, Public Safety, Corrections & Security
 Career Cluster Program of Study Template
www.boonville.k12.mo.us

Minimum Graduation Requirements		SUGGESTED COURSE OF HIGH SCHOOL STUDY						
It is suggested that students consider dual credit, articulation, or advanced placement opportunities for postsecondary credit.								
	Grade	English	Math	Science	Social Studies	Required Elective Options	Boonslick Technical Education Center	Additional Learning Opportunities
Secondary	9	ELA I	Algebra I	Physical Science	American History	PE Fine Art Health Practical Art Career & Leadership Connections	JROTC (L.E.T. I) Ag Science I♦	School-Based: <input type="checkbox"/> Career Research <input type="checkbox"/> Cooperative Education <input type="checkbox"/> Internship <input type="checkbox"/> Job Shadowing <input type="checkbox"/> Service Learning Project <input type="checkbox"/> Other: _____
	10	ELA II	Geometry	Biology	World Geography/ World History	PE Personal Finance Family Relations Child Development Business Mgmt. Career & Leadership Connections	Intro to Health Science JROTC (L.E.T. II) Ag Science II♦ PLTW Prin. of Biomedical Science*	Community Based: <input type="checkbox"/> Mentorship <input type="checkbox"/> Volunteer <input type="checkbox"/> Part-time Employment <input type="checkbox"/> Other: _____
	11	ELA III	Algebra II	Botany, Zoology, Earth Science Chemistry	Government or Honors Government	PE Accounting I Business Law Computer Apps. Adv. Computer Apps. Humanities Career & Leadership Connections Speech*	Conservation & Natural Resources♦* (even) Health Science I Lab♦ Intro to Health Science JROTC (L.E.T. III) PLTW Cybersecurity*	Assessments/Certifications: <input type="checkbox"/> Technical Skills Attainment (TSA) <input type="checkbox"/> Other: _____
	12	ELA IV or College Prep English*	Pre-Calc Alg* Pre-Calc Trig* Quant Reason Statistics* Calculus*	Anatomy Chemistry II Physics	Psychology* Sociology Criminal Justice Current Events US Hist Before 1877* US Hist After 1877*	PE Accounting II Speech* Humanities Career & Leadership Connections	Health Science I & II Lab♦ Intro to Health Science JROTC (L.E.T. IV) Ag Leadership & Communication*	Placement Assessments: <input type="checkbox"/> Accuplacer <input type="checkbox"/> ACT <input type="checkbox"/> PSAT <input type="checkbox"/> SAT <input type="checkbox"/> ASVAB <input type="checkbox"/> Other: _____
								Student Organizations: <input type="checkbox"/> FBLA <input type="checkbox"/> FFA <input type="checkbox"/> FCCLA <input type="checkbox"/> SkillsUSA <input type="checkbox"/> DECA <input type="checkbox"/> HOSA <input type="checkbox"/> JROTC

Postsecondary Offerings - For A Complete Listing, go to www.missouriconnections.org					
Postsecondary	Community College	Technical School/Training Institution	In State		Out of State/Other
	Crowder College www.crowder.edu East Central College www.eastcentral.edu Jefferson College www.jeffco.edu Linn State Technical College www.linnstate.edu Metropolitan Community College www.mcckc.edu Mineral Area College www.mineralarea.edu Moberly Area Community College www.macc.edu North Central MO College www.ncmissouri.edu Ozarks Tech Community College www.otc.edu St. Charles Community College www.stchas.edu St Louis Community College www.stlcc.edu State Fair Community College www.sfccmo.edu Three Rivers Community College www.trcc.edu	Cape Girardeau Career/Tech Center www.cape.k12.mo.us/cc/default.htm Columbia Career Center www.career-center.org Grand River Tech School - www.grts.org Hillyard Technical Center www.hillyardtech.com Rolla Technical Institute www.rolla.k12.mo.us Sikeston Career and Technology Center www.sikeston.k12.mo.us Waynesville Technical Academy www.waynesville.k12.mo.us	Avila University - www.avila.edu College of the Ozarks - www.coto.edu Columbia College - www.ccis.edu Drury University - www.drury.edu Evangel University - www.evangel.edu Everest College www.everest-college.com Hannibal-Lagrange College www.hlg.edu Hickey College www.hickeycollege.edu Lindenwood Univ - www.lindenwood.edu Maryville University of St. Louis www.maryville.edu MO Southern State University www.mssu.edu Missouri State University www.missouristate.edu Missouri State University – West Plains www.wp.missouristate.edu Missouri Western State University www.missouriwestern.edu	Park University - www.park.edu Patricia Stevens College www.patriciastevenscollege.edu Rockhurst University www.rockhurst.edu Saint Louis Univ - www.imagine.stu.edu Sanford-Brown College www.sanford-browncollege.com Southeast MO State University www.semo.edu Southwest Baptist University www.sbniv.edu Univ of Central MO - www.ucmo.edu University of MO – Columbia www.missouri.edu University of MO – Kansas City www.umkc.edu Univ of MO – St Louis - www.umsl.edu Univ of Phoenix – www.phoenix.edu Vatterott College www.vatterott-college.edu Washington University - www.wustl.edu Webster University - www.websteruniv.edu William Woods University www.williamwoods.edu	<ul style="list-style-type: none"> Apprenticeship Military On-the-Job Training Allied College www.alliedcollege.edu High Tech Institute www.hightechinstitute.edu National American University www.national.edu Texas County Technical Institute www.texascountytech.edu

Sample Careers By Educational Level - For Occupational Specialties, go to www.careerclusters.org or www.missouriconnections.org

On-The-Job Training or Less	Technical Training or Associate Degree	Bachelors Degree	Masters Degree or More
Ambulance Drivers Animal Control Workers Bailiffs Corrections Officers Court Clerks Crossing Guards Fire Fighters Forest Fire Fighters Gaming Surveillance Officers and Gaming Investigators Life Guards and Ski Patrollers Parking Enforcement Officers Parking Enforcement Workers Police, Fire, and Ambulance Dispatchers Security Guards Sheriffs Transportation Security Agents	Correctional Officers and Jailers Court Reporters Emergency Medical Technicians and Paramedics Fire Inspectors Fire Investigators First-Line Supervisors/Managers of Police and Detectives Forest Fire Fighting and Prevention Supervisors Forest Fire Inspectors and Prevention Specialists Legal Secretaries Municipal Fire Fighting and Prevention Supervisors Paralegals and Legal Assistants Police Detectives Police Identification and Records Officers Police Patrol Officers Private Detectives and Investigators Sheriffs and Deputy Sheriffs Title Examiners, Abstractors, and Searchers Transit and Railroad Police	Arbitrators and Mediators Coroners Correctional Treatment Specialists Criminal Investigators and Special Agents Emergency Management Specialists Forensic Science Technicians Immigration and Customs Inspectors Judges and Hearing Officers Law Clerks Probation Officers	Anthropology and Archeology Teachers, Postsecondary Child, Family, and School Social Workers Criminal Justice and Law Enforcement Teachers, Postsecondary Lawyer Psychology Teachers, Postsecondary



Boonville High School
Manufacturing
 Career Cluster Program of Study Template
www.boonville.k12.mo.us

Minimum Graduation Requirements	SUGGESTED COURSE OF HIGH SCHOOL STUDY It is suggested that students consider dual credit, articulation, or advanced placement opportunities for postsecondary credit.
---------------------------------	---

	Grade	English	Math	Science	Social Studies	Required Courses, Elective Options	Boonslick Technical Education Center	Additional Learning Opportunities
Secondary	9	ELA I	Algebra I	Physical Science	American History	PE Health Intro to Business Career & Leadership Connections	PLTW Engineering Essentials* Ag Science I ♦ Woodworking IT Fundamentals	School-Based: <input type="checkbox"/> Career Research <input type="checkbox"/> Cooperative Education <input type="checkbox"/> Internship <input type="checkbox"/> Job Shadowing <input type="checkbox"/> Service Learning Project <input type="checkbox"/> Other: _____
	10	ELA II	Geometry	Biology	World Geography or World History	Personal Finance Computer Apps. Business Economics Career & Leadership Connections	IT Fundamentals Ag Science II ♦ Advanced Woodworking PLTW Digital Electronics* PLTW Comp Sci Principles*	Community Based: <input type="checkbox"/> Mentorship <input type="checkbox"/> Volunteer <input type="checkbox"/> Part-time Employment <input type="checkbox"/> Other: _____
	11	ELA III	Algebra II	Botany, Zoology, Earth Science Chemistry	Government or Honors Government	Business Mgmt. Business Economics Career & Leadership Connections	Agricultural Construction ♦ Ag Power (odd) ♦ PLTW Digital Electronics* PLTW Robotics & SIM*	Assessments/Certifications: <input type="checkbox"/> Technical Skills Attainment (TSA) <input type="checkbox"/> Other: _____
	12	ELA IV or College Prep English*	Pre-Calc Alg* Pre-Calc Trig* Quant Reason Statistics* Calculus*	Anatomy Chemistry II Physics	Psychology* Sociology Criminal Justice Current Events US Hist Before 1877* US Hist After 1877*	Business Economics Career & Leadership Connections	Agricultural Construction ♦ Ag Power (odd) ♦ Ag Structures (odd) ♦ PLTW Robotics & SIM* PLTW Digital Electronics* PLTW Cybersecurity*	Placement Assessments: <input type="checkbox"/> Accuplacer <input type="checkbox"/> ACT <input type="checkbox"/> PSAT <input type="checkbox"/> SAT <input type="checkbox"/> ASVAB <input type="checkbox"/> Other: _____
Student Organizations: <input type="checkbox"/> FBLA <input type="checkbox"/> FFA <input type="checkbox"/> FCCLA <input type="checkbox"/> SkillsUSA <input type="checkbox"/> DECA <input type="checkbox"/> HOSA <input type="checkbox"/> JROTC								

Postsecondary Offerings – For A Complete Listing, go to www.missouriconnections.org

Postsecondary	Community College	Technical School/Training Institution	In State		Out of State/Other
	Crowder College www.crowder.edu Jefferson College www.jeffco.edu Linn State Technical College www.linnstate.edu Metropolitan Community College www.mcckc.edu Mineral Area College www.mineralarea.edu North Central Missouri College www.ncmissouri.edu Ozarks Technical Comm. College www.otc.edu St Louis Community College www.stlcc.edu State Fair Community College www.sfccmo.edu Three Rivers Community College www.trcc.edu	Carrollton Area Career Center www.trojans.k12.mo.us Eldon Career Center www.eldoncareercenter.org Grand River Technical School www.grts.org Herndon Career Center www.herndoncareercenter.com Hillyard Technical Center www.hillyardtech.com Lamar Area VoTech www.lamar.k12.mo.us Lex La-Ray Tech Center www.lexington.k12.mo.us Kirksville Area Tech Center www.kirksville.k12.mo.us North Central Career Center www.shr2.k12.mo.us Northland Career Center www.northlandcareercenter.com Northwest Tech School www.maryville.k12.mo.us Perryville Area Career/Tech Center www.perryville.k12.mo.us Ranken Tech College - www.ranken.edu South Central Career Center www.wphs.k12.mo.us Southwest Area Career Center www.swacc.k12.mo.us	Avila University - www.avila.edu Baptist Bible College - www.baptist.edu Bryan College - www.bryancollege.ecom Central Methodist University www.centralmethodist.edu College of the Ozarks - www.coto.edu Columbia College - www.ccis.edu Culver-Stockton College - www.culver.edu Drury University - www.drury.edu Evangel University - www.evangel.edu Everest College www.everest-college.edu Fontbonne Univ - www.fontbonne.edu Hannibal-Lagrange College - www.hlg.edu Harris-Stowe State Univ - www.hssu.edu Hickey College www.hickeycollege.edu Lincoln University - www.lincolnu.edu Lindenwood Univ - www.lindenwood.edu Maryville Univ of St. Louis www.maryville.edu Messenger College www.messengercollege.edu Missouri Baptist Univ - www.mobap.edu Missouri College - www.missouricollege.com MO Southern State Univ - www.mssu.edu Missouri State University www.missouristate.edu Missouri State University – West Plains www.wp.missouristate.edu	MO University of Science & Technology www.mst.edu Missouri Western State University www.missouriwestern.edu Northwest Missouri State University www.nwmissouri.edu Park University - www.park.edu Rockhurst University - www.rockhurst.edu Saint Louis University www.imagine.stu.edu Sanford-Brown College www.sanford-browncollege.com Southeast MO State Univ - www.semo.edu Southwest Baptist Univ - www.sbniv.edu Stephens College - www.stephens.edu Truman State Univ - www.truman.edu Univ of Central MO - www.ucmo.edu Univ of MO – Columbia - www.missouri.edu Univ of MO – Kansas City www.umkc.edu Univ of MO – St Louis - www.umsl.edu University of Phoenix - www.phoenix.edu Vatterott College - www.vatterott-college.edu Washington University - www.wustl.edu Webster University - www.websteruniv.edu Westminster College www.westminster-mo.edu William Jewell College - www.jewell.edu William Woods University www.williamwoods.edu	<ul style="list-style-type: none"> • Apprenticeship • Military • On-the-Job Training Colorado Technical University www.coloradotech.com DeVry University www.drury.edu Foley-Belsaw Institute www.foley-belsaw.com Grantham University www.grantham.edu ITT Technical Institute www.itt-tech.edu National American University www.national.edu Texas County Technical Institute www.texascountytech.edu

Sample Careers By Educational Level – For Occupational Specialties, go to www.careerclusters.org or www.missouriconnections.org

On-The-Job Training or Less	Technical Training or Associate Degree	Bachelors Degree	Masters Degree or More
Crane and Tower Operators Hoist and Winch Operators Locksmiths Machinists Metal and Plastic Processing Workers Operating Engineers and Construction Equipment Operators Painting and Coating Machine Operators Power Plant Operators Precision Assemblers Quality Control Inspectors Small Engine Mechanics Tailors Tire Building Machine Operators Tool and Die Makers Tool Grinders Upholsterers Vehicle Painters Woodworking Machine Operators	Automotive Electronics Installers Computer, ATM, and Office Machine Repairers Electric Motor Repairers Home Electronics Repairers Industrial Electronics Repairers Jewelers Manufacturing Production Technicians Security and Fire Alarm Systems Installers Semiconductor Processing Operators Welders and Solderers Welding and Soldering Machine Operators	Chemical Engineers Occupational Health and Safety Specialists Safety Engineers	



Boonville High School
Marketing
 Career Cluster Program of Study Template
www.boonville.k12.mo.us

Minimum Graduation Requirements		SUGGESTED COURSE OF HIGH SCHOOL STUDY It is suggested that students consider dual credit, articulation, or advanced placement opportunities for postsecondary credit.						
	Grade	English	Math	Science	Social Studies	Required Courses, Elective Options	<u>Boonslick Technical Education Center</u>	Additional Learning Opportunities
Secondary	9	ELA I	Algebra I	Physical Science	American History	PE Health Intro to Business Graphic Arts Spanish Career & Leadership Connections	Marketing ♦	School-Based: <input type="checkbox"/> Career Research <input type="checkbox"/> Cooperative Education <input type="checkbox"/> Internship <input type="checkbox"/> Job Shadowing <input type="checkbox"/> Service Learning Project <input type="checkbox"/> Other: _____
	10	ELA II	Geometry	Biology	World Geography/ World History	Personal Finance Business Economics Multimedia Graphic Arts/Adv Spanish Career & Leadership Connections	Adv. Marketing ♦	Community Based: <input type="checkbox"/> Mentorship <input type="checkbox"/> Volunteer <input type="checkbox"/> Part-time Employment <input type="checkbox"/> Other: _____
	11	ELA III	Algebra II	Botany, Zoology, Earth Science Chemistry	Government or Honors Government*	Spanish Multimedia Career & Leadership Connections Humanities Speech*	Entrepreneurship Fashion Marketing Retail Marketing Hospitality, Travel & Tourism	Assessments/Certifications: <input type="checkbox"/> Technical Skills Attainment (TSA) <input type="checkbox"/> Other: _____
	12	ELA IV or College Prep English*	Pre-Calc Alg* Pre-Calc Trig* Quant Reason Statistics* Calculus*	Anatomy Chemistry II Physics	Psychology* Sociology Criminal Justice Current Events US Hist Before 1877* US Hist After 1877*	Speech* Spanish Multimedia Career & Leadership Connections Humanities	Marketing Internship Entrepreneurship Fashion Marketing Retail Marketing Hospitality, Travel & Tourism	Placement Assessments: <input type="checkbox"/> Accuplacer <input type="checkbox"/> ACT <input type="checkbox"/> PSAT <input type="checkbox"/> SAT <input type="checkbox"/> ASVAB <input type="checkbox"/> Other: _____
		Student Organizations: <input type="checkbox"/> FBLA <input type="checkbox"/> FFA <input type="checkbox"/> FCCLA <input type="checkbox"/> SkillsUSA <input type="checkbox"/> DECA <input type="checkbox"/> HOSA <input type="checkbox"/> JROTC						

Postsecondary Offerings – For A Complete Listing, go to www.missouriconnections.org					
Postsecondary	Community College	Technical School/Training Institution	In State		Out of State/Other
	East Central College www.eastcentral.edu Crowder College www.crowder.edu Jefferson College www.jeffco.edu Metropolitan Community College www.mcckc.edu Mineral Area College www.mineralarea.edu Moberly Area Community College www.macc.edu North Central Missouri College www.ncmissouri.edu Ozarks Technical Comm. College www.otc.edu St. Charles Community College www.stchas.edu St Louis Community College www.stlcc.edu State Fair Community College www.sfccmo.edu Three Rivers Community College www.trcc.edu	Eldon Career Center - www.eldoncareercenter.org Hannibal Career and Technical Center www.hannibal.tec.mo.us Waynesville Technical Academy www.waynesville.k12.mo.us Northwest Tech School www.maryville.k12.mo.us Rankin Tech College - www.ranken.edu	Avila University - www.avila.edu Baptist Bible College - www.baptist.edu Bryan College - www.bryancollege.com Central Methodist University www.centralmethodist.edu College of the Ozarks - www.coto.edu Columbia College - www.ccis.edu Culver-Stockton College www.culver.edu DeVry University - www.devry.edu Drury University - www.drury.edu Evangel University - www.evangel.edu Everest College www.everest-college.com Fontbonne Univ - www.fontbonne.edu Hannibal-Lagrange College www.hlq.edu Harris-Stowe State Univ - www.hssu.edu Lincoln University - www.lincolnu.edu Lindenwood Univ - www.lindenwood.edu Maryville University of St. Louis www.maryville.edu Messenger College www.messengercollege.edu Missouri Baptist Univ - www.mobap.edu Missouri College www.missouricollege.com MO Southern State University www.mssu.edu Missouri State University www.missouristate.edu Missouri State University – West Plains www.wp.missouristate.edu Missouri Valley College www.moval.edu	Missouri Western State University www.missouriwestern.edu Northwest Missouri State University www.nwmissouri.edu Park University - www.park.edu Patricia Stevens College www.patriciastevenscollege.edu Rockhurst University - www.rockhurst.edu Saint Louis University www.imagine.stu.edu Sanford-Brown College www.sanford-browncollege.com Southeast MO State Univ - www.semo.edu Southwest Baptist Univ - www.sbuniv.edu Stephens College - www.stephens.edu Truman State Univ - www.truman.edu Univ of Central MO - www.ucmo.edu Univ of MO – Columbia - www.missouri.edu Univ of MO – Kansas City www.umkc.edu Univ of MO – Rolla – www.UMR.edu Univ of MO – St Louis - www.umsl.edu Univ of Phoenix – www.phoenix.edu Vatterott College www.vatterott-college.edu Washington University - www.wustl.edu Webster University - www.websteruniv.edu Westminster College www.westminster-mo.edu William Jewell College - www.jewell.edu William Woods University www.williamwoods.edu	<ul style="list-style-type: none"> Apprenticeship Military On-the-Job Training Colorado Technical University www.coloradotech.com Grantham University www.grantham.edu ITT Technical Institute www.itt-tech.edu National American University www.national.edu

Sample Careers By Educational Level – For Occupational Specialties, go to www.careerclusters.org or www.missouriconnections.org

On-the-Job Training or Less	Technical Training or Associate Degree	Bachelors Degree	Masters Degree or More
Advertising Salespeople Buyers and Purchasing Agents Cashiers Counter and Rental Clerks Demonstrators and Promoters Floral Designers Merchandise Displayers Models Opticians Parts Salespeople Retail Salespeople Route Salespeople Telemarketers	Advertising Sales Agents Assessors Fashion Designers Interior Designers Lodging Managers Property, Real Estate, and Community Association Managers Real Estate Brokers Sales Representatives, Wholesale and Manufacturing, Except Technical and Scientific Products Travel Agents Travel Guides Wholesale and Retail Buyers, Except Farm Products	Art Directors Editors Market Research Analysts Public Relations Specialists Sales Managers Sales Representatives Survey Researchers Technical Writers	Business Teacher, Postsecondary Marketing Managers Public Relations Managers Purchasing Managers Sales Managers



Boonville High School
Science, Technology, Engineering & Mathematics
 Career Cluster Program of Study Template
www.boonville.k12.mo.us

Minimum Graduation Requirements		SUGGESTED COURSE OF HIGH SCHOOL STUDY It is suggested that students consider dual credit, articulation, or advanced placement opportunities for postsecondary credit.						
Grade	English	Math	Science	Social Studies	Required Courses, Elective Options	Boonslick Technical Education Center	Additional Learning Opportunities	
Secondary	9	ELA I	Algebra I	Physical Science	American History	PE Health Spanish Career & Leadership Connections	Woodworking Ag Science I ♦ IT Fundamentals Computer Game Design PLTW Engineering Essentials*	School-Based: <input type="checkbox"/> Career Research <input type="checkbox"/> Cooperative Education <input type="checkbox"/> Internship <input type="checkbox"/> Job Shadowing <input type="checkbox"/> Service Learning Project <input type="checkbox"/> Other: _____
	10	ELA II	Geometry	Biology	World Geography or World History	Personal Finance Spanish Career & Leadership Connections	Advanced Woodworking PLTW Comp Sci Principles* Consumer Car Care Ag Science II ♦ Intro to Health Science Computer Game Design PLTW Principles of Biomedical Science* PLTW Digital Electronics* PLTW Engineering Essentials*	Community Based: <input type="checkbox"/> Mentorship <input type="checkbox"/> Volunteer <input type="checkbox"/> Part-time Employment <input type="checkbox"/> Other: _____
	11	ELA III	Algebra II	Botany, Zoology, Earth Science Chemistry	Government or Honors Government*	Spanish Computer Appl/Adv Multimedia Career & Leadership Connections	Agricultural Construction ♦ Agricultural Power (odd) ♦ Auto Tech Theory & Lab ♦ Health Science Lab Landscape/Turf Mngmt ♦* PLTW Robotics* PLTW Prin of Biomedical Science* PLTW Human Body Systems* Adv Woodworking PLTW Digital Electronics*	Assessments/Certifications: <input type="checkbox"/> Technical Skills Attainment (TSA) <input type="checkbox"/> Other: _____
	12	ELA IV or College Prep English*	Pre-Calc Alg* Pre-Calc Trig* Quant Reason Statistics* Calculus*	Anatomy Chemistry II Physics	Psychology* Sociology Criminal Justice Current Events US Hist Before 1877* US Hist After 1877*	Spanish Career & Leadership Connections	Agricultural Construction ♦ Auto Tech Theory & Lab II ♦ Ag Structures ♦ (odd) PLTW Robotics* PLTW Prin of Biomedical Science* PLTW Human Body Systems* Adv Woodworking PLTW Digital Electronics*	Placement Assessments: ⚡ Accuplacer ⚡ ACT ⚡ PSAT ⚡ SAT ⚡ ASVAB ⚡ Other: _____
							Student Organizations: <input type="checkbox"/> FBLA <input type="checkbox"/> FFA <input type="checkbox"/> FCCLA <input type="checkbox"/> SkillsUSA <input type="checkbox"/> DECA <input type="checkbox"/> HOSA <input type="checkbox"/> JROTC	

Postsecondary Offerings – For A Complete Listing, go to www.missouriconnections.org					
Postsecondary	Community College	Technical School/Training Institution	In State		Out of State/Other
		Crowder College www.crowder.edu East Central College www.eastcentral.edu Jefferson College www.jeffco.edu Metropolitan Community College www.mcckc.edu St. Charles Community College www.stchas.edu St Louis Community College www.stlcc.edu	Missouri Tech www.motech.edu	Avila University - www.avila.edu Central Methodist University www.centralmethodist.edu College of the Ozarks - www.coto.edu Columbia College - www.ccis.edu Culver-Stockton College www.culver.edu Drury University - www.drury.edu Evangel University - www.evangel.edu Lincoln University - www.lincolnu.edu Lindenwood Univ - www.lindenwood.edu Maryville University of St. Louis www.maryville.edu Missouri Baptist Univ - www.mobap.edu MO Southern State University www.mssu.edu Missouri State University www.missouristate.edu MO University of Science & Technology www.mst.edu Missouri Western State University www.missouriwestern.edu	Northwest Missouri State University www.nwmissouri.edu Park University - www.park.edu Rockhurst University www.rockhurst.edu Saint Louis University www.imagine.stu.edu Southeast MO State University www.semo.edu Southwest Baptist University www.sbuniv.edu Truman State Univ - www.truman.edu Univ of Central MO - www.ucmo.edu University of MO – Columbia www.missouri.edu University of MO – Kansas City www.umkc.edu Univ of MO – Rolla – www.umar.edu Univ of MO – St Louis - www.umsl.edu Washington University - www.wustl.edu Westminster College www.westminster-mo.edu William Jewell College - www.jewell.edu
Sample Careers By Educational Level – For Occupational Specialties, go to www.careerclusters.org or www.missouriconnections.org					
On-the-Job Training or Less	Technical Training or Associate Degree	Bachelors Degree		Masters Degree or More	
	Electronics Engineering Technologists Engineering Technicians Manufacturing Engineering Technologists Science Technicians	Aerospace Engineers Biomedical Engineers Cartographers Chemists Civil Engineers Electrical and Electronics Engineers Energy Engineers Environmental Engineers Geospatial Information Scientists and Technologists Industrial Engineers Manufacturing Engineers Materials Engineers Mechanical Engineers Meteorologists Mining Engineers Nuclear Engineers Petroleum Engineers Photonics Engineers Remote Sensing Scientists and Technologists		Anthropologists Archeologists Astronomers Biologists Environmental Scientists Geographers Geologists and Geophysicists Historians Mathematicians Physicists Political Scientists Robotics Engineers Sociologists	



Boonville High School
Transportation, Distribution & Logistics
 Career Cluster Program of Study Template
www.boonville.k12.mo.us

Minimum Graduation Requirements		SUGGESTED COURSE OF HIGH SCHOOL STUDY It is suggested that students consider dual credit, articulation, or advanced placement opportunities for postsecondary credit.						
Grade	English	Math	Science	Social Studies	Required Courses, Elective Options	Boonslick Technical Education Center	Additional Learning Opportunities	
Secondary	9	ELA I	Algebra I	Physical Science	American History	PE Health Intro to Business Career & Leadership Connections	Ag Science I ♦ Marketing ♦ PLTW Engineering Essentials* JROTC (L.E.T. I)	School-Based: <input type="checkbox"/> Career Research <input type="checkbox"/> Cooperative Education <input type="checkbox"/> Internship <input type="checkbox"/> Job Shadowing <input type="checkbox"/> Service Learning Project <input type="checkbox"/> Other: _____
	10	ELA II	Geometry	Biology	World Geography or World History	Personal Finance Computer Apps./Adv Career & Leadership Connections	Consumer Car Care Ag Science II ♦ Advanced Marketing ♦ PLTW Digital Electronics* JROTC (L.E.T. II)	Community Based: <input type="checkbox"/> Mentorship <input type="checkbox"/> Volunteer <input type="checkbox"/> Part-time Employment <input type="checkbox"/> Other: _____ Assessments/Certifications: <input type="checkbox"/> Technical Skills Attainment (TSA) <input type="checkbox"/> Other: _____
	11	ELA III	Algebra II	Botany, Zoology, Earth Science Chemistry	Government or Honors Government*	Business Law Business Mgmt. Accounting I Career & Leadership Connections	JROTC (L.E.T. III) Ag Power ♦ (odd) Ag Construction ♦ Auto Technology Lab ♦ Auto Technology Theory I ♦ Consumer Car Care Entrepreneurship Retail Marketing PLTW Robotics*	Placement Assessments: <input type="checkbox"/> Accuplacer <input type="checkbox"/> ACT <input type="checkbox"/> PSAT <input type="checkbox"/> SAT <input type="checkbox"/> ASVAB <input type="checkbox"/> Other: _____
	12	ELA IV or College Prep English*	Pre-Calc Alg* Pre-Calc Trig* Quant Reason Statistics* Calculus*	Anatomy Chemistry II Physics	Psychology* Sociology Criminal Justice Current Events US Hist Before 1877* US Hist After 1877*	Accounting II Career & Leadership Connections	Ag Power ♦ (odd) Ag Construction ♦ Auto Technology Lab ♦ Auto Technology Theory I ♦ Entrepreneurship Marketing Internship Consumer Car Care JROTC (L.E.T. IV)	Student Organizations: <input type="checkbox"/> FBLA <input type="checkbox"/> FFA <input type="checkbox"/> FCCLA <input type="checkbox"/> SkillsUSA <input type="checkbox"/> DECA <input type="checkbox"/> HOSA <input type="checkbox"/> JROTC

Postsecondary Offerings – For A Complete List of Colleges, go to www.missouriconnections.org

Postsecondary	Community College	Technical School/Training Institutions	In State		Out of State/Other
	Crowder College www.crowder.edu East Central College www.eastcentral.edu Hannibal-Lagrange College www.hlg.edu Jefferson College www.jeffco.edu Linn State Technical College www.linnstate.edu Metropolitan Community College www.mcckc.edu Mineral Area College www.mineralarea.edu Moberly Area Community College www.macc.edu North Central Missouri College www.ncmissouri.edu Ozarks Technical Comm. College www.otc.edu Ranken Technical College www.ranken.edu Sanford-Brown College www.sanford-browncollege.com St Louis Community College www.stlcc.edu State Fair Community College www.sfccmo.edu	Cape Girardeau Career/Tech Center www.cape.k12.mo.us/cc/default.htm Clinton Tech School - www.clinton.k12.mo.us Davis Hart Career Car- www.mexicoschools.net Eldon Career Car - www.eldoncareercenter.org Four Rivers Career Center www.washington.k12.mo.us Franklin Technology- MSSU www.ftcjoplin.com Gibson Tech Car - www.wolves.k12.mo.us/gtc Grand River Technical School - www.grts.org Hannibal Career and Technical Center www.hannibal.tec.mo.us Herndon Career Center www.herndoncareercenter.com Hillyard Technical Car - www.hillyardtech.com Kirksville Area Tech Car - www.kirksville.k12.mo.us Lake Career and Technical Center www.camdentonschools.org Lebanon Technology and Career Car www.lebanon.k12.mo.us/lccc Lex La-Ray Tech Car www.lexington.k12.mo.us Nichols Career Center - www.jcps.k12.mo.us Northland Career Center www.northlandcareercenter.com Northwest Tech School www.maryville.k12.mo.us Pike-Lincoln Tech Car - www.pltc.k12.mo.us Rolla Tech Institute - www.rolla.k12.mo.us Saline County Career Center www.marshallschools.com/sccc Sikeston Career & Technology Center www.sikeston.k12.mo.us South Central Career Car - www.wphs.k12.mo.us Waynesville Technical Academy www.waynesville.k12.mo.us	Avila University - www.avila.edu Baptist Bible College - www.baptist.edu Bryan College - www.bryancollege.com Central Methodist University www.centralmethodist.edu College of the Ozarks - www.cofo.edu Columbia College - www.ccis.edu Culver-Stockton College - www.culver.edu DeVry University - www.devry.edu Drury University - www.drury.edu Evangel University - www.evangel.edu Everest College - www.everest-college.edu Fontbonne Univ - www.fontbonne.edu Grantham Univ - www.grantham.edu Harris-Stowe State Univ - www.hssu.edu Lincoln University - www.lincolnu.edu Lindenwood Univ - www.lindenwood.edu Maryville University of Saint Louis www.maryville.edu Messenger College www.messengercollege.edu Missouri Baptist Univ - www.mobap.edu Missouri College www.missouricollege.com Missouri Southern State University www.mssu.edu Missouri State University www.missouristate.edu Missouri State Univ – West Plains www.wp.missouristate.edu Missouri University of Science & Tech www.mst.edu	Missouri Western State University www.missouriwestern.edu Northwest Missouri State University www.nwmissouri.edu Park University - www.park.edu Rockhurst Univ - www.rockhurst.edu Patricia Stevens College www.patriciastevenscollege.edu St. Louis Univ - www.imagine.slu.edu Southeast Missouri State University www.semo.edu Southwest Baptist University www.sbniv.edu Stephens College - www.stephens.edu Truman State Univ - www.truman.edu University of Central MO - www.ucmo.edu University of Missouri – Columbia www.missouri.edu University of Missouri – Kansas City www.umkc.edu University of Missouri – St Louis www.umsl.edu Univ of Phoenix - www.phoenix.edu Vatterott College www.vatterott-college.edu Washington University - www.wustl.edu Webster Univ - www.websteruniv.edu Westminster College www.westminster-mo.edu William Jewell College - www.jewell.edu William Woods University www.williamwoods.edu	<ul style="list-style-type: none"> Apprenticeship Military On-the-Job Training Aviation Institute of Maintenance www.aviationmaintenanc.e.edu Colorado Technical University www.coloradotech.com American Truck Training www.americantrucktraining.com C-1 Truck Driver Training www.c1training.com ITT Technical Institute www.itt-tech.edu Midwestern Training Center National American University www.national.edu Nuway Truck Driver Training www.nuwaytruckschools.com Southern MO Truck Driving School www.smtds.com Westwind CDL Training Center www.westwindcdl.com Witte Truck Driving School

Sample Careers By Educational Level – For Occupational Specialties, go to www.careerclusters.org or www.missouriconnections.org

On-the-Job Training or Less	Technical Training or Associate Degree	Bachelors Degree	Masters Degree or More
Air Traffic Controllers and Flight Attendants Auto Body Repairers Bicycle Repairers Bus Drivers and School Bus Drivers Dispatchers and Traffic Technicians Freight Handlers Heavy Equipment Mechanics Heavy Truck Drivers Motorboat & Motorcycle Mechanics Parking Lot Attendants Riggers Service Station Attendants, Tire Repairers and Changers Transportation Agents	Aircraft Mechanic Automobile Mechanics Bus and Truck Mechanics and Diesel Engine Specialists Electrical/Electronics Installers/Repairers, Transportation Equipment Electronic Equipment Installers/Repairers, Motor Vehicles First-Line Supervisors/Managers of Helpers, Laborers, and Material Movers, Hand First-Line Supervisors/Managers of Transportation Material-Moving Machine and Vehicle Operators Motorboat Mechanics and Motorcycle Mechanics Signal and Track Switch Repairers Traffic Technicians Transportation Vehicle, Equipment/Systems Inspectors	Airline Pilot Logisticians Storage and Distribution Managers	Chief Executive