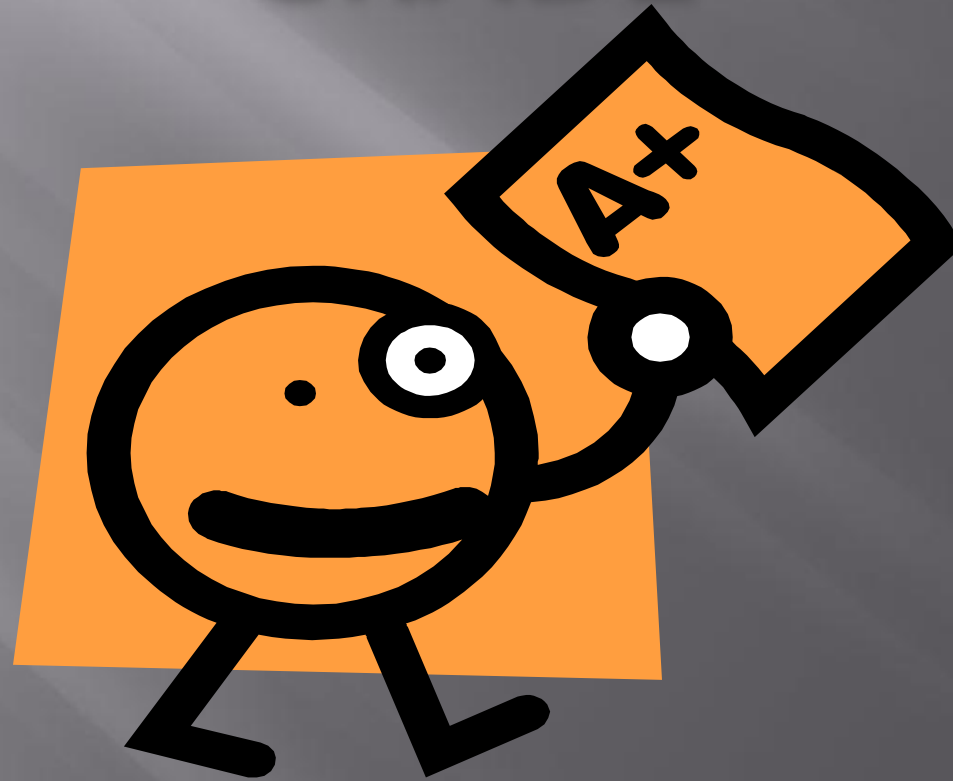
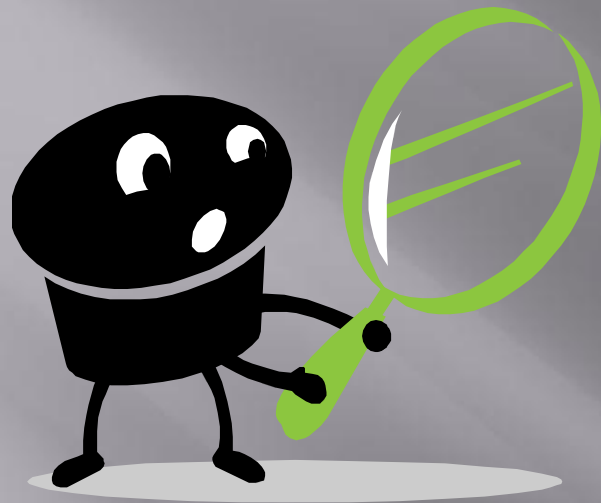


# REASONS TO MAKE THE GRADE





# Report Card

Grade reports provide a time to stop and examine academic progress in a class.

**Do your grades reflect your time and effort?**

**Will your grades enable you to reach your goals?**

# G.P.A.

- ✓ Semester grades are recorded on a student's transcript and are used to compute a grade point average .
- ✓ A transcript will show both a GPA for the current semester's grade and an accumulative GPA of all the grades a student has earned while in high school.
- ✓ To compute a GPA, the letter grade is converted to grade points. The points are added together and the sum of the points is divided by the number of classes taken.
- ✓ The GPA for the grade card on this slide would be a 3.25. A=4, B=3, C=2. The sum of the grades is 26 which is divided by 8 classes.

# Grade Point Average

REPORT CARD				
GRADING PERIOD	1	2	3	4
READING	A			
WRITTEN COMMUNICATION	A			
MATHEMATICS	C			
SCIENCE/HEALTH	B			
SOCIAL STUDIES	B			
ART	A			
MUSIC	A			
PHYSICAL EDUCATION	C			
Grade Average	B			
Attendance:	Present	48		
	Absent	0		
	Tardy	1		
A = Excellent • B = Good • C = Satisfactory • N = Needs Improvement U = Unsatisfactory • I = Insufficient / Incomplete				
Student: _____ Grade: _____ Year: _____				

# Accumulative GPA Matters

Your GPA will determine the following things:

- ▣ The classes you take
- ▣ Your eligibility for the A+ Program
- ▣ Your opportunity to take dual-credit courses
- ▣ NCAA and NAIA athletic eligibility
- ▣ Scholarship Opportunities
- ▣ Car insurance rates

# Course Selection

- ▣ An advance class may require that a student pass an earlier class with a minimum grade.
- ▣ Example – Zoology requires a “C+” in Biology.



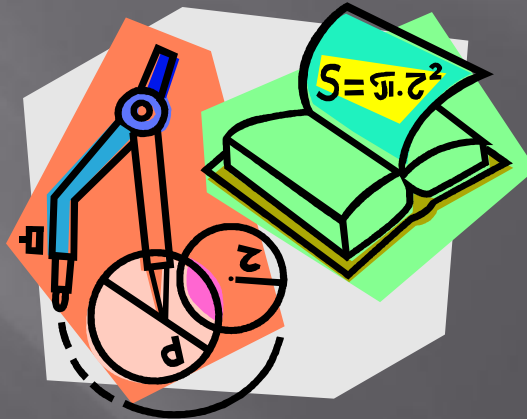
# Scholarships

- ▣ Most scholarships are based on ACT score and GPA.
- ▣ Generally, a 3.00 GPA is the minimum GPA for institutional aid.
- ▣ The freshman, sophomore, and junior grades are the basis for most scholarships.
- ▣ Many scholarships are renewable if student maintains GPA.



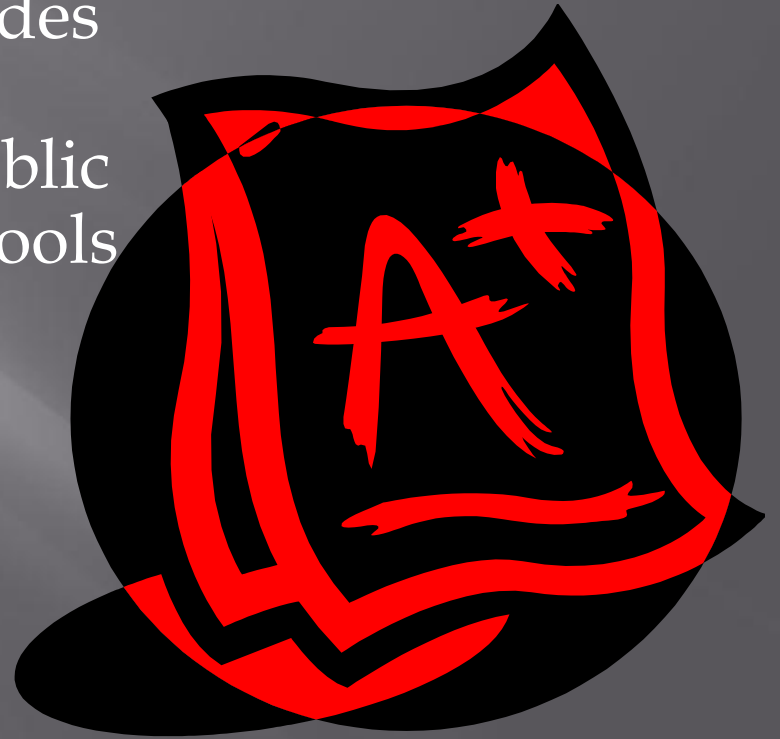
# Dual Credit Classes

- ▣ Dual credit courses allow students to earn both high school and college credit at the same time.
- ▣ The cost is much less than regular college tuition.
- ▣ Students must have a minimum 3.00 GPA. Some dual credit courses require a minimum ACT math or English subtest score.



# Missouri's A+ Program

- ▣ Missouri's A+ Program provides eligible students with up to 6 semesters of free tuition at public community colleges/tech schools
- ▣ Eligibility Requirements:
  - ▣ 2.5 Accumulative GPA
  - ▣ 95 % attendance
  - ▣ 50 hours mentoring /tutoring
  - ▣ Good citizenship
  - ▣ Prof or Advanced on Algebra I EOC Test (starting w/current 9<sup>th</sup> graders)



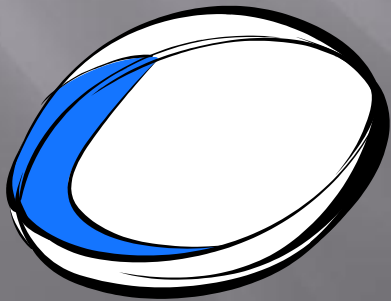


# College Sports Eligibility Requirements

## NAIA

Student must meet 2 of the following requirements:

- ▣ 18 composite on ACT
- ▣ 2.00 GPA
- ▣ Graduate in upper half of class



## NCAA

“D2” – 17 composite ACT  
2.00 GPA

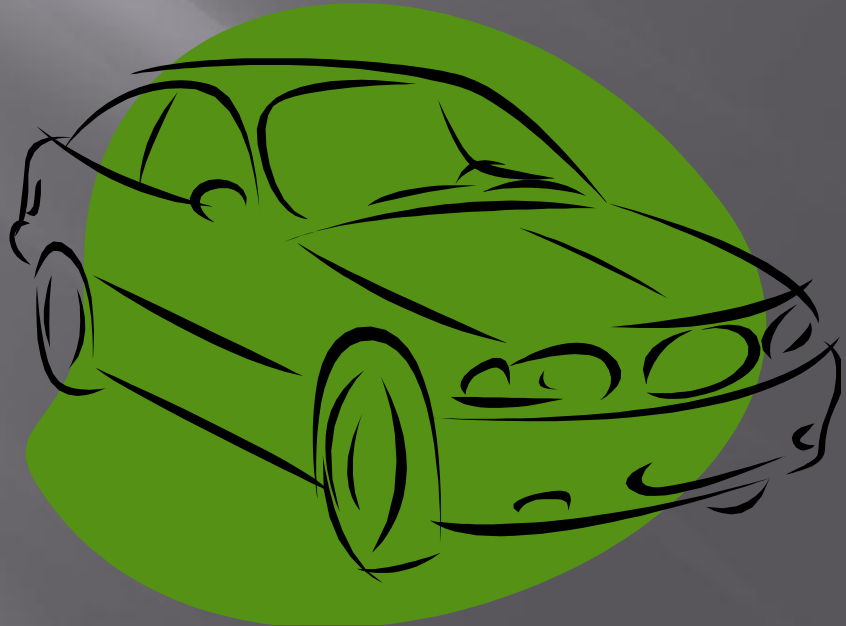
16 core classes

“D1” – 16 core classes

minimum of a 2.00  
GPA as part of a  
sliding scale of  
GPA and ACT

# Car Insurance Premiums

- ▣ Many insurance companies will offer a “Good Student” discount to students who maintain a 3.00 GPA. Discounts may save up to 30% on premiums.



# Start Early to build GPA

## A CAUTIONARY TALE

Ag Science	C+	B-	+
Physical Science	D+	F	
Spanish I	C	C-	
Comm Arts I	D+	C	
9 <sup>th</sup> Grade PE	A	A	
Algebra I	C	C	
Am History	B	C	

**GPA 2.178**

This student couldn't continue to Spanish II and had to take credit recovery during summer school. Currently not eligible for A+. Will have to pay expensive car insurance

## LESSON TO THE STORY

- ▣ Pay attention in class.
- ▣ Do and turn in homework.
- ▣ Ask questions and seek help when needed.
- ▣ Take school seriously.

